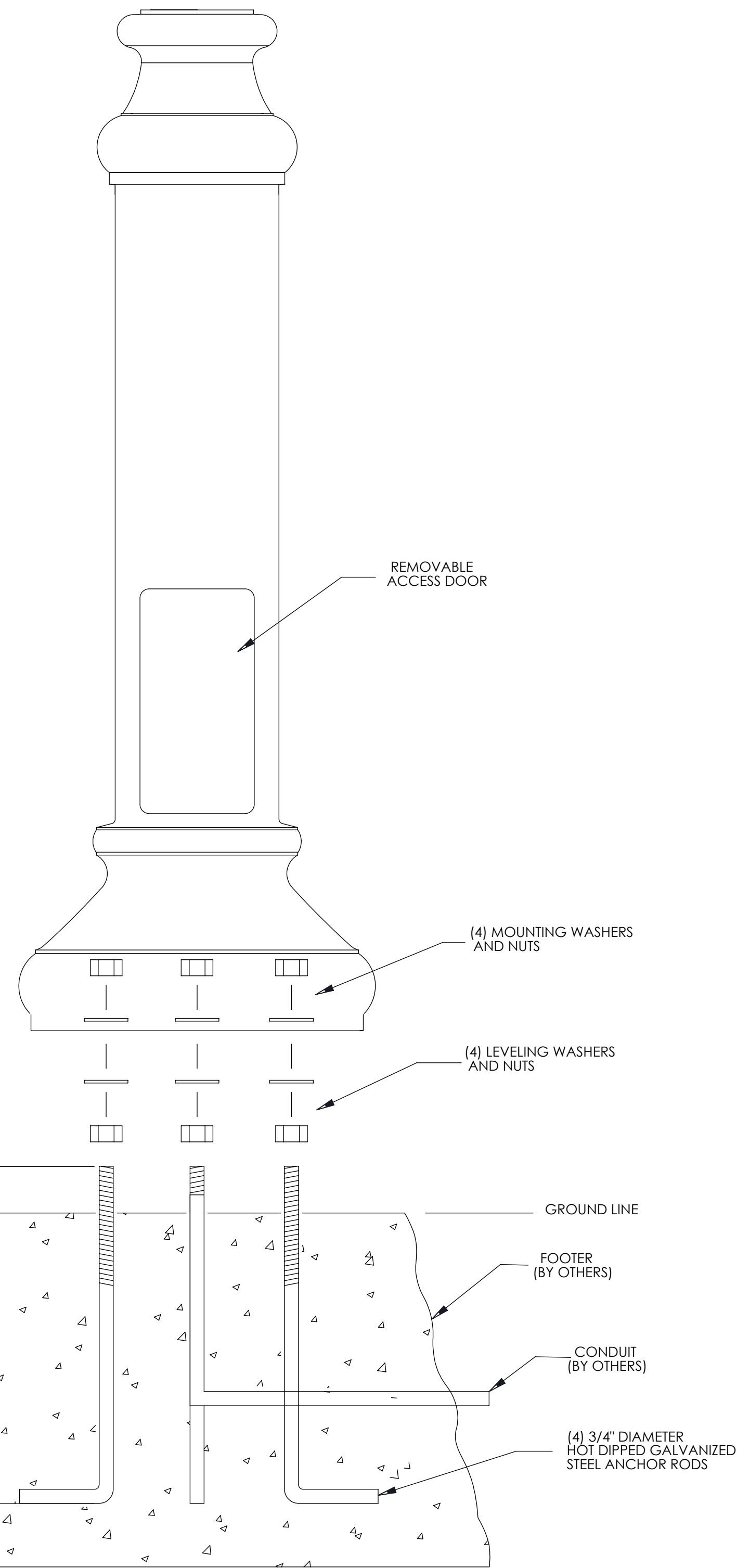


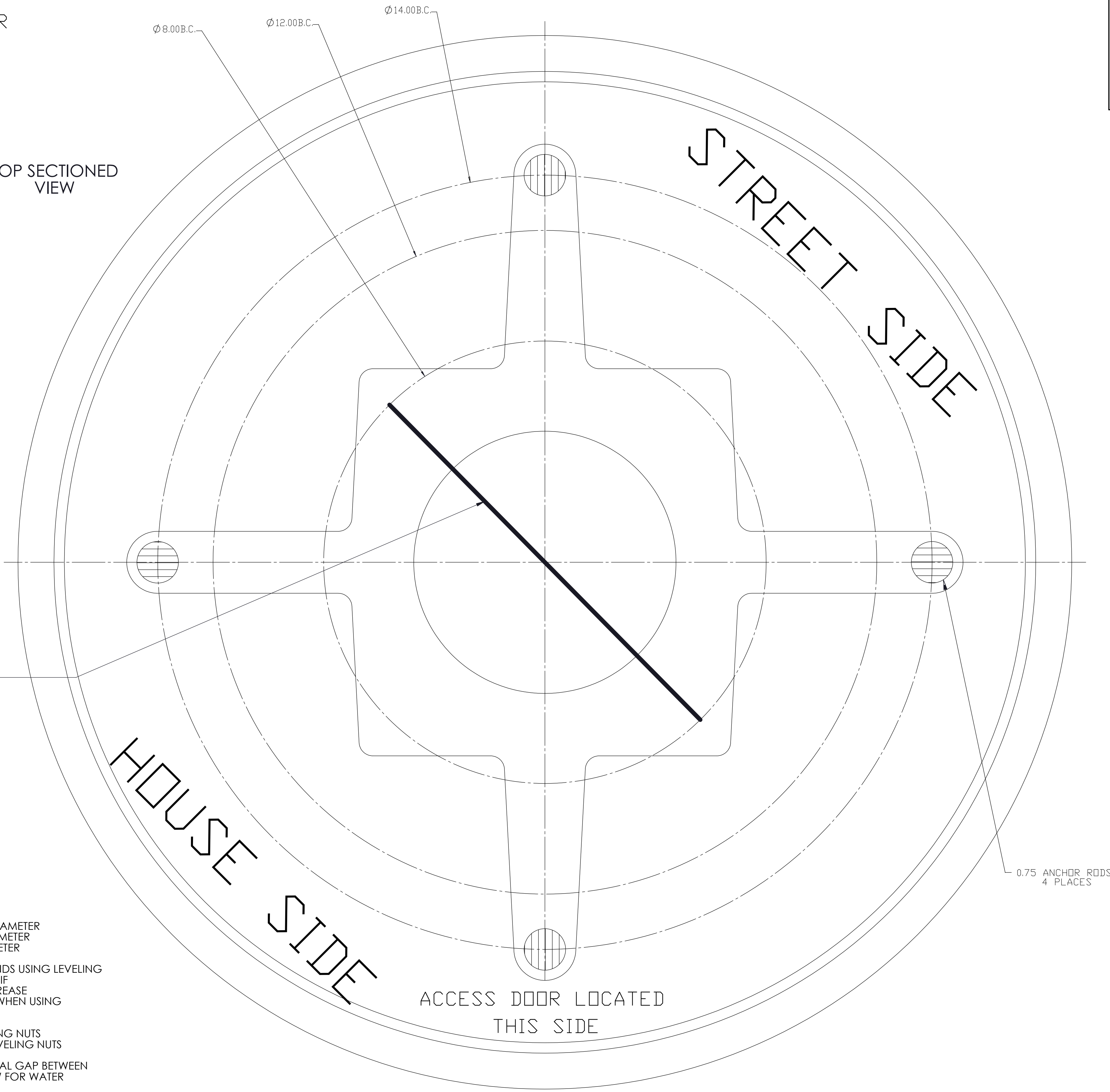
FULL SIZE ANCHOR
 TEMPLATE FOR
 P4130 & 4160
 POST WITH
 01700914 BASE

PART NO. T01700914



TOP SECTIONED VIEW

VERIFY BOLD LINE IS 8" LONG



- NOTES:
- SUGGESTED BOLT CIRCLE: 12" DIAMETER
 MAXIMUM BOLT CIRCLE: 14" DIAMETER
 MINIMUM BOLT CIRCLE: 8" DIAMETER
 - HADCO STRONGLY RECOMMENDS USING LEVELING NUTS TO MOUNT THE POST BASE. IF FOUNDATION IS NOT LEVEL, INCREASE "X" DIMENSION ACCORDINGLY WHEN USING LEVELING NUTS WITH WASHERS.
 X = 3 1/4" MINIMUM WITH LEVELING NUTS
 X = 2 1/4" MINIMUM WITHOUT LEVELING NUTS
 - IF USING GROUTING TO CONCEAL GAP BETWEEN BASE AND FOUNDATION, ALLOW FOR WATER DRAINAGE.

HADCO by @ignify	<small>CONFIDENTIAL: This drawing is confidential and proprietary to Signify Holdings and may not be reproduced in whole or in part without the express written consent of Signify Holdings. © 2018 Signify Holdings. All rights reserved.</small>		TITLE: TEMP.AR,4100
	DRAWN BY: HDS DATE: 1/7/97	DRW SIZE: D	MATERIAL: 22 X 34 WHITE BOND PAPER.
<small>UNLESS OTHERWISE SPECIFIED: *ALL DIMENSIONS ARE IN INCHES. *ALL THREADS ARE UNC-28 OR UNF-28 AFTER COATING. *ALL THREADS ARE TO BE VERIFIED WITH A THREAD GAGE.</small>	CHECKED BY: B. DORON DATE: 8/4/09	APPR BY: E. HADDAD DATE: 1/7/97	PART NO: T01700914
* DO NOT SCALE THIS DRAWING *	EF-04-01-11 Rev.09	SCALE 1:1	SHEET 1 OF 1