

# Day-Brite

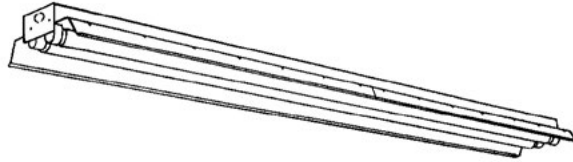
## CFI

by  Signify

### Industrial

IA all purpose

T8 or T12 Slimline



Project: \_\_\_\_\_  
 Location: \_\_\_\_\_  
 Cat.No: \_\_\_\_\_  
 Type: \_\_\_\_\_  
 Lamps: \_\_\_\_\_ Qty: \_\_\_\_\_  
 Notes: \_\_\_\_\_

Day-Brite / CFI all purpose industrial is an industrial luminaire available with or without upright at a economical price.

#### Ordering guide

Example: IA259-1/2-EB

Family	No. of Lamps per Cross Section	Lamp Type	Voltage	Options
	2	—	—	
<b>IA</b> Industrial with upright	(not included)	<b>48</b> 38WT12 Slimline (48")	<b>UNV</b> Universal 120/277V	<b>1/2</b> One 2-lamp ballast
<b>IS</b> Solid Top Reflector	<b>2</b>	<b>59</b> 59WT8 Slimline (96") <b>96</b> 75WT12 Slimline (96")	<b>120</b> 120V <b>277</b> 277V <b>347</b> 347V	<b>EB</b> Electronic ballast, <10% THD <b>E7</b> B60 emerg. ballast, 600-700 lumens, 120/277V <b>E5</b> B50 emerg. ballast, U.S. or Canada market, 1100-1400 lumens, UNV <b>E5CAN</b> B50-CAN emerg. ballast, Canada market, 1100-1400 lumens, 120/347V <b>E5ST</b> B50ST emerg. ballast w/self test, U.S. or Canada market, 1100-1400 lumens, UNV <b>GLR</b> Fusing, fast blow
				See section 1600-OA for option info. and 950-SS for mounting hardware. Power Connect modular wiring available, see sheet 1604-OA for details

#### Accessories (order separately)

- **CS-400** Rigid canopy
- **CS-500** 42" top swivel canopy
- **CS-12** 12" Stem
- **CS-18** 18" Stem
- **CS-24** 24" Stem
- **CS-30** 30" Stem
- **CS-36** 36" Stem
- **CS-48** 48" Stem
- **CTBH-1** T-bar sliding hanger, flush mount
- **CTBH-2** T-bar sliding hanger, 1-1/2" spacing
- **FKR-126** Chain hanger set
- **N-3381** Universal joint aligner, octagonal box, 3/4" I.P.S.
- **TH-1** Sliding hanger, flush mounting
- **TH-2** Sliding hanger, 1-1/2" spacing except T12HO/VHO
- **TC-1** Heavy duty coupler
- **FKR-173** 4' Wire guard (use 2 for 8')



# IA All purpose industrial

## T8 or T12 Slimline

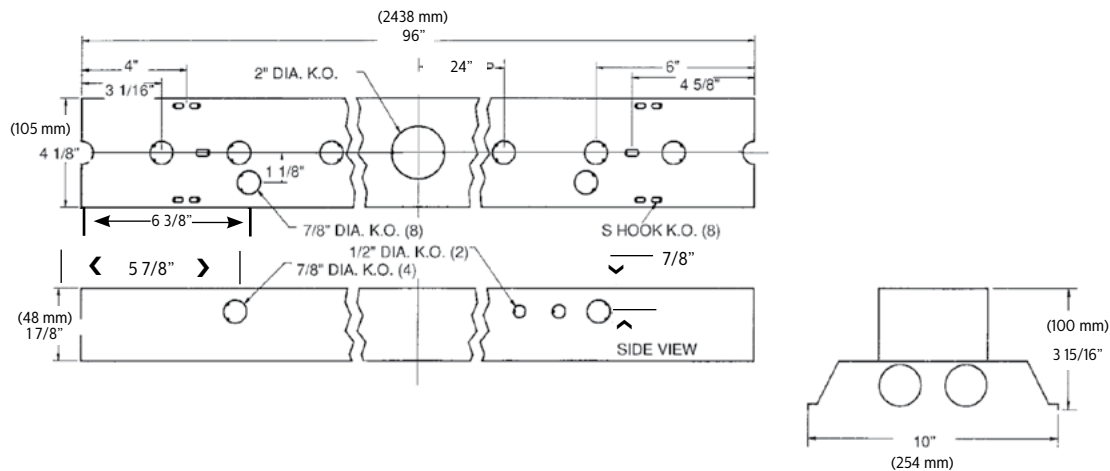
### Construction/Finish

- Reflectors feature reinforcing forms and are painted with high reflectance baked white enamel finish.
- Multiple knockouts for convenient installation.
- Heavy duty channel of code gauge die formed steel with baked white enamel finish.
- Reflectors are easily installed and have up-light construction standard. Solid top reflectors are available.
- Combination end cap/coupler requires no tools for installation.
- 1/4 turn reflector fastener requires no tools.
- Suitable for unit or row, direct or suspension mounting

### Electrical

- cULus listed for direct mounting on low density ceilings and damp locations.
- Self-contained fluorescent emergency power packs can be incorporated.
- Pressure lock lampholders secured by snap-in socket plates.

### Dimensions



# IA All purpose industrial

## T8 or T12 Slimline

### Photometry

IA all purpose industrial, 8' 2 Lamp 96W T12

Efficiency – 86.9%

LER – FI-61

TER – 37

Catalog No. IA296 Test No. 42322 S/MH 1.5 Lamp Type F96ES Lumens/Lamp 5500 Ballast Factor .90 Input Watts 131		Candlepower				Light Distribution				Average Luminance							
		Angle	End	45	Cross	Degrees	Lumens	% Lamp	% Luminaire	Angle	End	45'	Cross				
Comparative yearly lighting energy cost per 1000 lumens – <b>\$3.53</b> based on 3000 hrs. and <b>\$.08</b> pwr KWH.  The photometric results were obtained in the Day-Brite laboratory which is NVLAP accredited by the National Institute of Standards and Technology.		0	2621	2621	2621	0-30	2147	19.5	21.6	45	4061	5145	5882				
		5	2621	2608	2662	0-40	3648	33.2	36.8	55	3928	5698	6391				
		15	2540	2588	2684	0-60	7090	64.5	71.5	65	3644	6088	5985				
		25	2362	2521	2684	0-90	9561	86.9	96.4	75	3050	5189	4827				
		35	2106	2407	2660	90-180	361	3.3	3.6	85	1815	2815	2074				
		45	1779	2254	2577	0-180	9923	90.2	100.0								
		55	1396	2025	2271	<b>Coefficients of Utilization</b>											
		65	954	1594	1567	<b>EFFECTIVE FLOOR CAVITY REFLECTANCE 20 PER (pfc=0.20)</b>											
		75	489	832	774	pcc											
		85	98	152	112	80											
		95	0	22	15	70											
		105	0	78	81	50											
		115	0	120	131	pw											
		125	0	137	166	70 50 30											
		135	0	69	172	70 50 30											
		145	0	18	78	RCR											
		155	0	9	15	0											
165	0	3	7	1													
175	0	2	1	0													

IA all purpose industrial, 8' 2 Lamp 96W T8

Efficiency – 92.6%

LER – FI-83

TER – 50

Catalog No. IA259-1/2-EB Test No. 42323 S/MH 1.5 Lamp Type F96T8 Lumens/Lamp 5800 Ballast Factor .85 Input Watts 110		Candlepower				Light Distribution				Average Luminance							
		Angle	End	45	Cross	Degrees	Lumens	% Lamp	% Luminaire	Angle	End	45'	Cross				
Comparative yearly lighting energy cost per 1000 lumens – <b>\$2.89</b> based on 3000 hrs. and <b>\$.08</b> pwr KWH.  The photometric results were obtained in the Day-Brite laboratory which is NVLAP accredited by the National Institute of Standards and Technology.		0	2763	2763	2763	0-30	2266	19.5	21.1	45	4337	5455	6209				
		5	2765	2750	2803	0-40	3853	33.2	35.9	55	4218	6078	6892				
		15	2683	2727	2821	0-60	7528	64.9	70.1	65	3953	6676	7295				
		25	2498	2658	2829	0-90	10380	89.5	96.6	75	3405	6592	5818				
		35	2236	2549	2800	90-180	362	3.1	3.4	85	2148	2833	1852				
		45	1900	2390	2720	0-180	10741	92.6	100.0								
		55	1499	2160	2449	<b>Coefficients of Utilization</b>											
		65	1035	1748	1910	<b>EFFECTIVE FLOOR CAVITY REFLECTANCE 20 PER (pfc=0.20)</b>											
		75	546	1057	933	pcc											
		85	116	153	100	80											
		95	0	19	14	70											
		105	0	97	107	50											
		115	0	159	181	pw											
		125	0	106	227	70 50 30											
		135	0	10	133	70 50 30											
		145	0	2	11	RCR											
		155	0	1	3	0											
165	0	0	1	1													
175	0	0	0	0													



Some luminaires use fluorescent or high intensity discharge (HID) lamps that contain small amounts of mercury. Such lamps are labeled, "Contain Mercury" and/or the symbol "HG". Lamps that contain mercury must be disposed of in accordance with local requirements. Information regarding lamp recycling and disposal can be found at [www.lamprecycle.org](http://www.lamprecycle.org)

