

Day-Brite

CFI

by @ignify

Special Application

Kleenseal KTR 300

Cleanroom
T8, T8HO, T5, or T5HO



Project: _____
 Location: _____
 Cat.No: _____
 Type: _____
 Lamps: _____ Qty: _____
 Notes: _____

The Day-Brite / CFI Kleenseal KTR 300 recessed is a 400 PSI hosedown cleanroom luminaire with sealed junction box, suited for pharmaceutical and chemical facilities, food processing plants, or areas requiring hosedown.

Ordering guide

Example: K3244F32G3AP31-1/4-EB

Family	Size	No. of Lamps	Lamp Type	Ceiling Type	Door Frame	Lens Type	Voltage	No. of Ballasts	Ballast Type	Options
K3										
K3 Kleenseal KTR300	14 1x4 22 2x2 24 2x4	2 Two lamps 3 Three lamp 4 Four lamps (2x2,2x4) 6 Six lamps (2x4)	F17 17WT8 F32 32WT8 F44 44WT8HO F14 14WT5 F28 28WT5 F54 54WT5HO	G 1",1-1/2" Grid T 2G 2" Grid T F Flange	3 CRS 1-piece overlap white 304 5 1-piece overlap stainless	AP3 .125" Acrylic Prismatic VPL Sealed Louver Other lenses available	U Universal voltage, 120-277V 1 120V 2 277V 3 347V	1/2 One 2-lamp ballast 2/1 Two 1-lamp ballasts 1/3 One 3-lamp ballast 1/21 2-lamp & 1-lamp ballasts 1/4 One 4-lamp ballast 2/2 Two 2-lamp ballasts 2/3 Two 3-lamp ballasts 1/42 4-lamp & 2-lamp ballasts	EB Electronic ballast <10% THD EB1OR T8 electronic ballast, program rapid start, <10% THD	GMF Fusing, slow blow TP Tamper Resistant Screws E7 B60 emerg. ballast, T8, 600-700 lumens, 120/277V E5 B50 emerg. ballast, U.S. or Canada market, T8, 1100-1400 lumens, UNV DN Lens Furnished Prisms Down SSH Stainless Steel housing

Product Availability

Luminaire Length	Lamp Type	No. of Lamps
1x4	F32	2, 3
1x4	F28	2, 3
2x2	F14	2, 3, 4
2x2	F17	2, 3, 4
2x4	F32	2, 3, 4, 6
2x4	F28	2, 3, 4, 6
2x4	F44, F54	2, 3, 4

General Notes

• Many luminaire components, such as reflectors, refractors, lenses, sockets, lampholders, and LEDs are made from various types of plastics which can be adversely affected by airborne contaminants. If sulfur based chemicals, petroleum based products, cleaning solutions, or other contaminants are expected in the intended area of use, consult factory for compatibility.



K3 Kleenseal KTR 300 recessed

Cleanroom, T8, T8HO, T5, or T5HO

Standards

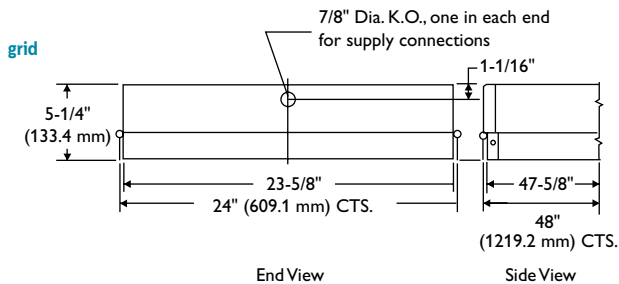
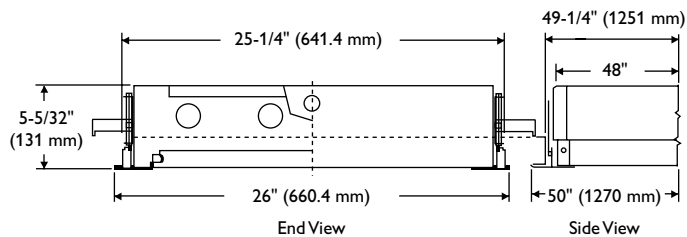
- Certified to meet UL 1598 standards for wet location.
- NSF is standard.

Construction/Finish

- Totally sealed 20ga CRS housing. Stainless steel is optional.
- Fits 1", 1-1/2", and 2" grid or flange mountings.
- All joints and points of penetration are silicone sealed.
- All rivets are closed end, seal rivets.
- Sealed junction box prevents contamination thru raceway system.

- Flange mounting available.
- Seismic support mounting is standard.
- 18ga CRS one piece double thickness door is standard. 304 stainless steel is optional.
- Countersunk stainless steel gasketed screws on 12" centers.
- .125" prismatic acrylic lens is silicone sealed to door frame.
- Door frame is retained to housing when opened for safety and ease during re-lamping.
- 400 psi hosedown door frame.
- Suitable for use as raceway (maximum of 4 No. 12 AWG).

Dimensions



Note: For technical information or codes and classifications, see PDFs Tech1-Tech5 online.

Ceiling Opening Flange Type

1X4	13-1/4" X 49-1/4"
2X2	25-1/4" X 25-1/4"
2X4	25-1/4" X 49-1/4"



Some luminaires use fluorescent or high intensity discharge (HID) lamps that contain small amounts of mercury. Such lamps are labeled, "Contain Mercury" and/or the symbol "Hg". Lamps that contain mercury must be disposed of in accordance with local requirements. Information regarding lamp recycling and disposal can be found at www.lamprecycle.org

