

Day-Brite

CFI

by @signify

Linear

Little Inch
1" task light

solid front, T5 or T5HO



Project: _____

Location: _____

Cat.No: _____

Type: _____

Lamps: _____ Qty: _____

Notes: _____

Day-Brite / CFI Little Inch solid front task light is a superior quality miniature fluorescent for general use undercabinet lighting in residential, commercial, and industrial applications.

Ordering guide

Example: SFHP121277WHG

Family	Lamp Type	Voltage ²	Dimming	Finish	Lamp Color Temperature	Options
SFHP						
SFHP	<u>1' nominal</u> 108¹ (1) F8T5 (Preheat), miniature bipin base, 12-5/16" <u>2' nominal</u> 113¹ (1) F13T5 (Preheat), miniature bipin base, 21-5/16" 116¹ (2) F8T5 (Preheat), miniature bipin base, 24-1/2" 114 (1) F14T5, miniature bipin base, 22-1/2" 124 (1) F24T5HO, miniature bipin base, 22-1/2" <u>3' nominal</u> 138¹ (1) F8T5 & (1) F13T5 (Preheat), miniature bipin base, 33-1/2" 121 (1) F21T5, miniature bipin base, 34-3/8" 139 (1) F39T5HO, miniature bipin base, 34-3/8" <u>4' nominal</u> 213¹ (2) F13T5 (Preheat), miniature bipin base, 42-1/2" 128 (1) F28T5, miniature bipin base, 46-1/4" 154 (1) F54T5HO, miniature bipin base, 46-1/4"	120 120V 277 277V	blank non-dimming DIM1³ 0-10V dimming DIM2³ Phase dimming	WHG White BLK Black	blank 3000K 35K¹ 3500K 41K 4100K	COW⁴ White grounded convenience outlet CS3W⁴ 6' white U.L. label 3-wire cordset RSW Factory installed rocker switch SBF GMF slow-blow fuse and holder

Footnotes

1. 3500K and 120V not available with standard pre-heat configurations.
2. 347V not available
3. Dimming available for models SFHP114, SFHP124, SFHP121, SFHP131, SFHP128, SFHP154
4. CS3W & COW options available only for 120V.



SFHP100/200 Little Inch 1" task light

T5 or T5HO

Features

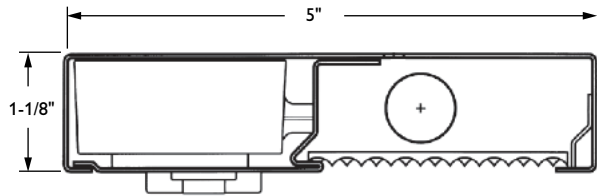
- Solid metal front with lay-in diffuser.
- Post fabrication painting eliminates raw edges which can rust or cause injury.
- Limited lifetime warranty.
- Extremely thin 1" deep profile.
- Available in various lengths with standard pre-heat, premium, and high output lamps.
- Quick installation and easy maintenance with hinged wireway.
- Flush ends allow row mounting for continuous illumination.
- SF models allow for easy lens removal when mounted flush to the front of a cabinet or when fully recessed into a pocket.

Specifications

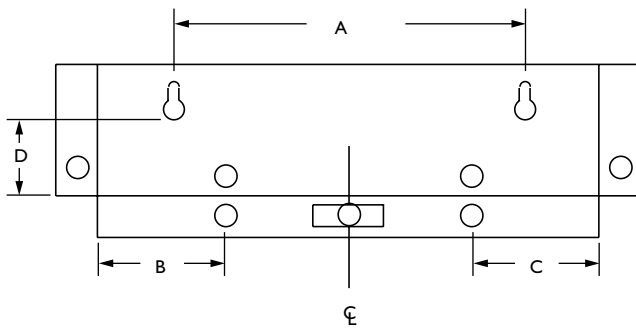
- **Construction:** 20 gauge cold rolled steel housing with corners neatly formed and knockouts flattened. All exposed edges deburred.
- **Electrical/Lamps:** For standard T5 lamps, electronic normal power factor ballast, 120V only. 3000K warm white lamps included. Optional 4100K cool white (41K) lamp available. 7,500 hour average life. For premium T5 lamps, high power factor electronic rapid start ballast. 3000K tri-phosphor lamps included. 3500K (35K) or 4100K (41K) tri-phosphor lamps available in place of standard 3000K. 20,000 hour average life. For T5 high output lamps, high power factor electronic rapid start ballast. 3000K tri-phosphor lamps included. 3500K (35K) or 4100K (41K) tri-phosphor lamps available in place of standard 3000K. 20,000 hour average life.

- **Diffuser:** Prismatic lay-in acrylic diffuser.
- **Finish:** Baked on polyester resin powder-coat finish, applied after fabrication over a bonderizing iron phosphate coating.
- **Installation:** UL recognized electrical fitting accepts 3/8" flexible metal conduit (green-field) or romex (supplied in units without cordsets). 3/16" dia. keyhole mounting slots and hinged wireway with conceal fasteners for simplified mounting/wiring. Wirenuts and mounting screws provided.
- **Labels:** cULus listed for damp locations.
- **Warranty:** All luminaire components (except for the lamps and ballasts) are warranted against defects during the life of the original installation.

Dimensions



Knockouts and Mounting Holes (Flat Pattern)



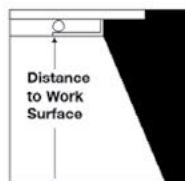
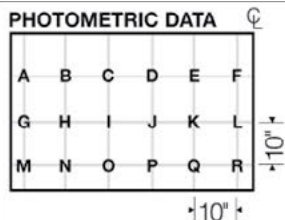
Knockouts and Mounting Holes					
Model	Unit Length	A	B	C	D
SFHP108*	12-5/16"	8-1/16"	-	-	3"
SFHP113	21-5/16"	17-1/16"	5"	5"	3"
SFHP116	24-1/2"	20-1/4"	5"	5"	3"
SFHP138	33-1/2"	29-1/4"	5"	5"	3"
SFHP213	42-1/2"	38-1/4"	5"	5"	3"
SFHP114/124	22-1/2"	18-5/16"	5"	5"	3"
SFHP121/139	34-3/8"	30-1/8"	5"	5"	3"
SFHP128/154	46-1/4"	41-15/16"	5"	5"	3"

*SFHP108 provided with rear center knockout in place of access plate

SFHP100/200 Little Inch 1" task light

T5 or T5HO

Photometry



Cat No.	Distance to Work Surface	Footcandles on Worksurface																	
		A	B	C	D	E	F	G	H	I	J	K	L	M	N	O	P	Q	R
SFHP-108	15"	3	13	36	36	13	3	2	5	11	11	5	2	1	2	2	2	2	1
SFHP-113	15"	9	32	68	68	32	9	4	11	20	20	11	4	2	3	5	5	3	2
SFHP-116	15"	9	32	62	62	32	9	4	11	19	19	11	4	2	3	5	5	3	2
SFHP-138	15"	20	56	83	83	56	20	8	8	26	26	18	8	3	5	6	6	5	3
SFHP-213	15"	37	77	96	96	77	37	13	25	30	30	25	13	5	7	8	8	7	5

Data from ITL report numbers: 30274A15-78A15



Some luminaires use fluorescent or high intensity discharge (HID) lamps that contain small amounts of mercury. Such lamps are labeled, "Contain Mercury" and/or the symbol "HG". Lamps that contain mercury must be disposed of in accordance with local requirements. Information regarding lamp recycling and disposal can be found at www.lamprecycle.org

