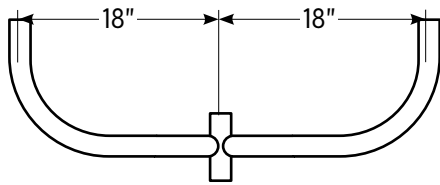


The Gardco floodlight and bullhorn brackets consist of one-piece extruded aluminum tubing positioned to accept a wide variety of mounting configurations. These accessories are finished with either Architectural Class 1 anodizing or electrostatically applied TGIC polyester powdercoat. All accessories include mounting hardware. Accessories are available in either a 1.9" O.D. for mounting the Gardco DF7 and DF12, or in a 2.4" O.D. for mounting other luminaires. Twin, triple and quad bullhorn bracket hubs slipfit 3", 4", 4 - 1/2" and 6" O.D. round pole tops or tenons.

Project: _____
 Location: _____
 Cat.No: _____
 Type: _____
 Lamps: _____ Qty: _____
 Notes: _____

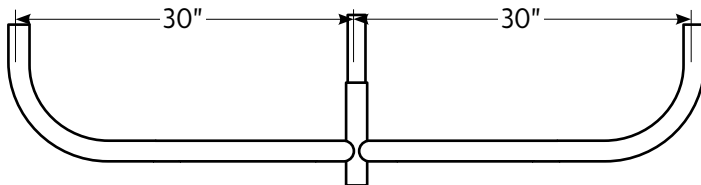
Ordering

Twin Bullhorn 180°



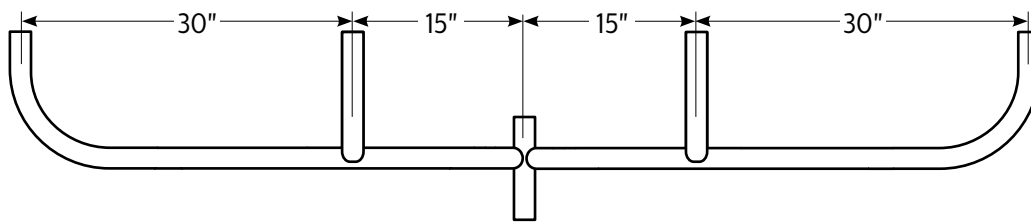
A2BH-180-19 (1.9" O.D.)
 A2BH-180-24 (2.4" O.D.)
 EPA of Bracket: .78
 Max Weight Load per Tenon: 100 lbs
 Max EPA Load per Tenon: 5.3
Can be ordered for field install.

Triple Bullhorn 180°



A3BH-180-19 (1.9" O.D.)
 A3BH-180-24 (2.4" O.D.)
 EPA of Bracket: 1.21
 Max Weight Load per Tenon: 100 lbs
 Max EPA Load per Tenon: 4.4
Can be ordered for field install.

Quad Bullhorn 180°

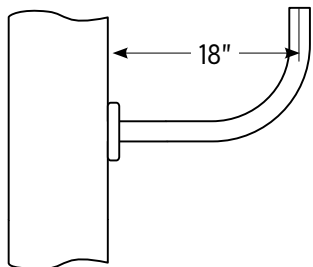


A4BH-180-19 (1.9" O.D.)
 A4BH-180-24 (2.4" O.D.)
 EPA of Bracket: 1.76
 Max Weight Load per Tenon: 100 lbs
 Max EPA Load per Tenon: 2.2
Can be ordered for field install.

Poles Aluminum Pole Accessories: Floodlight and Bullhorn Brackets

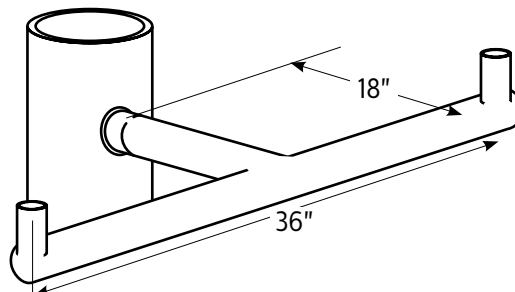
Ordering (cont'd)

Single Side Mount Bullhorn Bracket



A15BH-19 (1.9" O.D.)
A15BH-24 (2.4" O.D.)
Acceptable Mounting Height: 8' - 48'
EPA of Bracket: .47
Max Weight Load per Tenon: 100 lbs
Max EPA Load per Tenon: 3.5

2-Tenon Side Mount Bracket



A215BH-19 (1.9" O.D.)
A215BH-24 (2.4" O.D.)
Acceptable Mounting Height: 8' - 48'
EPA of Bracket: .78
Max Weight Load per Tenon: 60 lbs
Max EPA Load per Tenon: 3.5

Single Side Mount Bullhorn Brackets and 2-Tenon Side Mount Brackets must be ordered as an option with the pole. Requires drilling and welding of the pole. Pole order must indicate height above base and orientation to handhole. See Pole Orientation Information (79415-12.)

