

Day-Brite

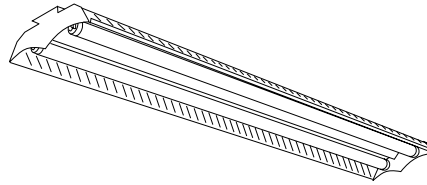
CFI

by Signify

Industrial

Industrial Kinetics

T5, T5HO, or T8



Project: _____
 Location: _____
 Cat.No: _____
 Type: _____
 Lamps: _____ Qty: _____
 Notes: _____

Day-Brite / CFI Industrial Kinetics luminaire employs an innovative herringbone design to create a contemporary look and to provide smooth, even uplight spread over a 170° distribution for a brighter environment.

Ordering guide

Example: **IKA232-UNV-1/2-EBLHE**

Family	Reflector	No. of Lamps per Cross Section	Lamp Type	Voltage	Options
IK Industrial Kinetics	A Apertured	(not included)	28 28WT5 (46")	UNV Universal voltage	1/2 One 2-lamp ballast
TIK Tandem Version	S Solid	2	32 32WT8 (48")	120/277V	1/3 One 3-lamp ballast
		3	54HO 54WT5HO (46")	120 120V	1/21 2-lamp & 1-lamp ballasts
				277 277V	1/4 One 4-lamp ballast
				347 347V	2/2 Two 2-lamp ballasts
					1/42 4-lamp & 2-lamp ballasts
					EB Electronic ballast, <10% THD
					EB1OR T8 electronic ballast, program rapid start, <10% THD
					EBHE T8 electronic ballast, high efficiency, std. ballast factor
					EBLHE T8 electronic ballast, high efficiency, low ballast factor
					EBHHE T8 electronic ballast, high efficiency, high ballast factor
					LT20 -20°F start option (T8 only, use in conjunction with ballast option)
					E5LP B50LP emerg. ballast T8, 1375-1400 lumens, 120/277V
					E7LP LP550 emerg. ballast T5/T5HO, 430-700 lumens, 120/277V
					E6LP LP600 emerg. ballast U.S. or Canada market, T5/T5HO, 750-1325 lumens, 120/277V
					GLR Fusing, fast blow
Power Connect modular wiring available, see sheet 1604-OA for details					

Accessories (order separately)

- **E4-HKK** Sliding hanger bracket with 7/8" hole (one)
 - **E4-HKS** Sliding hanger bracket with 1/4" x 1" slot (one)
 - **E4-CHK** Chain hanger hooks (pair) (requires FL-123 or similar)
 - **FL-123** 5' chain (w/S-hooks) (pair) (requires E4-CHK)
 - **CS-400** Rigid canopy
 - **CS-500** 42" top swivel canopy
 - **CS-12** 12" Stem
 - **CS-18** 18" Stem
 - **CS-24** 24" Stem
 - **CS-30** 30" Stem
 - **CS-36** 36" Stem
 - **CS-48** 48" Stem
 - **N-3380/3381** Universal joint aligner, octagonal box, 1/2" / 3/4" I.P.S.
 - **IK-173** 4' wire guard (use 2 for 8')
 - **IK-BF** 4' cross baffle (use 2 for 8')
 - **IK-BFDEK** End caps (pair) for use with IK-BF cross baffle
 - **ACH48** Aircraft cable hanger, 48" (one)
 - **ACH48-SC** Aircraft cable hanger with straight power cord, 48" (one)
 - **ACH48-CC** Aircraft cable hanger with coiled power cord, 48" (one)
- For stem kits refer to spec. sheet 950-SS.
 For aircraft cable hanger kits refer to spec. sheet 950-SS.



IK Industrial Kinetics luminaire

T5, T5HO, or T8

Application

- Designed for modern T8 and T5 sources.
- Easy to install industrial luminaire.
- Designed for individual or continuous row mounting.
- Unique tabs allow row mounting with no extra aligners or joiners.
- Reflector with integral ballast channel eliminates the need to attach a separate reflector after mounting the channel.
- Shallow profile minimizes visual size and enables installation in low height applications.
- Wide light distribution and high optical efficiency allow wide luminaire spacing.
- “Herringbone” slots in apertured reflector provide approximately 15% uplight in a smooth, even 170° uplight distribution.
- Available low profile baffle accessory provides longitudinal shielding of lamps.

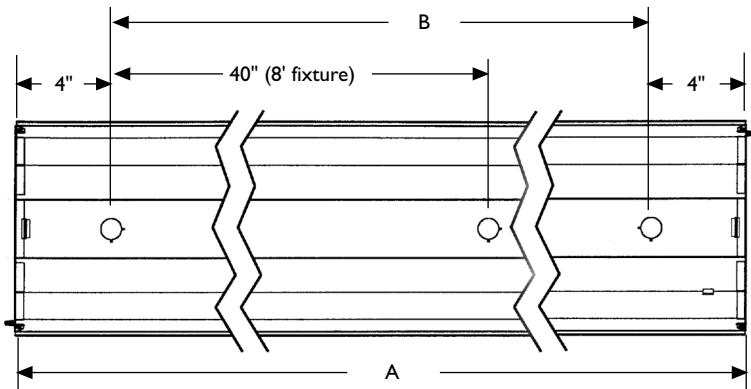
Construction/Finish

- Solid or apertured reflectors.
- Housing is painted after fabrication with high reflectance white polyester powder finish.
- Multiple knockouts and optional sliding hanger brackets offer convenient installation.
- Locking sockets ensure lamps make positive contact and are positively retained..

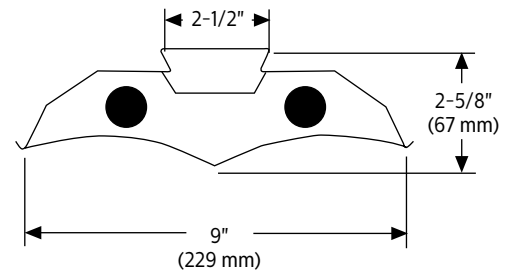
Electrical

- cULus listed for damp locations.
- (Low-Profile) Self-contained fluorescent emergency power packs can be incorporated.

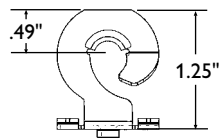
Dimensions



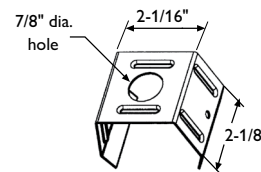
	DIM "A"	DIM "B"
4' Fixture	48" (1219mm)	40" (1016mm)
8' Fixture	96" (2438mm)	88" (2235mm)



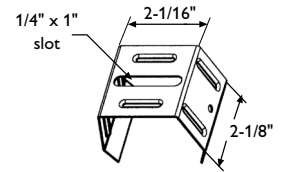
E4-CHK chain hanger



E4-HKK mounting bracket



E4-HKS mounting bracket



IK Industrial Kinetics luminaire

T5, T5HO, or T8

Photometry

IK 4' 2 Lamp F32T8

Efficiency – 95.1%

LER – 81

TER – 57

Catalog No.	IKA232-1/2-EB	Candlepower				Light Distribution				Average Luminance			
		Angle	End	45	Cross	Degrees	Lumens	% Lamp	% Luminaire	Angle	End	45'	Cross
Test No.	19716	0	1463	1463	1463	0-30	1161	20.4	21.4	45	5235	5614	5866
S/MH	1.3	5	1459	1462	1459	0-40	1925	33.8	35.5	55	5079	5675	6343
Lamp Type	F32T8	15	1411	1425	1430	0-60	3537	62.1	65.2	65	4806	6162	7280
Lumens/Lamp	2850	25	1310	1344	1363	0-90	4904	86.0	90.4	75	4240	7244	8754
Ballast Factor	0.88	35	1173	1225	1254	90-180	518	9.1	9.6	85	2860	7854	8793
Input Watts	59	45	995	1067	1115	0-180	5422	95.1	100.0				
		55	783	875	978								
		65	546	700	827								
		75	295	504	609								
		85	67	184	206								
		95	6	54	82								
		105	27	43	72								
		115	58	46	60								
		125	92	58	65								
		135	125	96	79								
		145	146	125	110								
		155	170	156	151								
		165	189	182	177								
		175	197	199	199								

Coefficients of Utilization									
EFFECTIVE FLOOR CAVITY REFLECTANCE 20 PER (pfc=0.20)									
pcc	80			70			50		
pw	70	50	30	70	50	30	50	30	
RCR									
0	111	111	111	107	107	107	101	101	
1	100	94	90	95	92	88	85	82	
2	90	81	75	86	79	72	73	68	
3	81	70	63	79	68	60	65	57	
4	75	63	54	71	60	53	56	50	
5	68	56	46	66	54	46	51	44	
6	63	50	40	60	48	40	46	39	
7	57	45	36	56	44	35	41	34	
8	54	40	33	52	40	32	38	30	
9	51	38	29	48	36	28	34	28	
10	46	34	27	46	34	26	32	26	

Comparative yearly lighting energy cost per 1000 lumens – **\$3.28** based on 3000 hrs. and \$.08 pwr KWH.

The photometric results were obtained in the Day-Brite laboratory which is NVLAP accredited by the National Institute of Standards and Technology.



Some luminaires use fluorescent or high intensity discharge (HID) lamps that contain small amounts of mercury. Such lamps are labeled, "Contain Mercury" and/or the symbol "HG". Lamps that contain mercury must be disposed of in accordance with local requirements. Information regarding lamp recycling and disposal can be found at www.lamprecycle.org

