

Read and understand these instructions before installing luminaire.

This luminaire is intended for installation in accordance with the National Electrical Code and local regulations. To assure full compliance with local codes and regulations, check with your local electrical inspector before installation. To prevent electrical shock, turn off electricity at fuse box before proceeding.

Retain these instructions for maintenance reference.

INSTRUCTIONS FOR ATTACHING A TANGENT™ LUMINAIRE TO THE TANGENT TRACK SYSTEM AND ACCESSORIES. FOR USE ON CEILING MOUNT OR SUSPENDED MOUNT TRACK ONLY.

CAUTION: HOT SURFACE. Keep away from curtains and any other combustables.

CAUTION: RISK OF BURN. Allow time for luminaire to cool before touching track head for relamping or positioning.

1. Turn power off to TRACK.
2. Turn PIN on ADAPTER counter-clockwise until ADAPTER is fully open. (fig. 1)
3. Place open luminaire ADAPTER on the TRACK with the DIMPLES (fig. 3) and PIN facing same direction.
4. As LUMINAIRE is in place on the TRACK tighten pin by turning it clockwise. (fig. 2)
5. TO REMOVE turn PIN counter-clockwise until fully retracted then pull luminaire down.

NOTE: DO NOT install luminaire with TRANSFORMER underneath connectors. (fig. 4)

INSTRUCTIONS FOR SETTING THE LENGTH FOR FX16GC AND FX16SC

1. Determine distance needed from HOUSING to SUSPENDED BAR for BRAIDED CABLE and have 2-3/4" to 3" extra.
2. Run CABLE through CABLE LOCK by pushing CABLE LOCK up and feeding CABLE through hole.

**NOTES: a) BRAIDED CABLE should not support load.
b) Position CABLE for luminaire to hang straight**

3. Cut CABLE slack when height is met.

INSTRUCTIONS ELECTRICAL CONNECTION

1. Cut off 3/4" BRAIDED CABLE off the end exposing INNER WIRE (DO NOT CUT INSULATION OF INNER WIRE), and Strip 3/8" insulation off INNER WIRE. (Fig. 6)
3. Run BRAIDED CABLE towards side with SCREW and BOSS. (Fig. 5)
4. Loop BRAIDED CABLE around SCREW and bring back past the centerpoint towards the next open cavity. (Fig. 5)
5. Tighten SCREW down on BRAIDED CABLE.
6. Bring SUSPENDED BAR up towards ADAPTER and fasten with set screws.
7. Use WIRE NUT provided to splice the PIGTAIL lead from the ADAPTER to the INNER WIRE in the BRAIDED CABLE. (Fig. 7)
6. Carefully push down the WIRE NUT into the open cavity and put the COVER over the cavity and screw it down. (Fig. 8)
7. Do the same with COVER on opposite side.

FIG. 1 OPEN POSITION

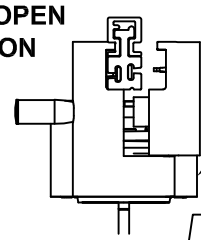


FIG. 2 CLOSED POSITION

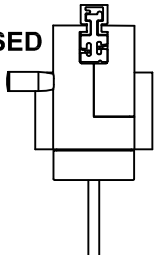


FIG. 3

FIG. 4 DO NOT POSITION

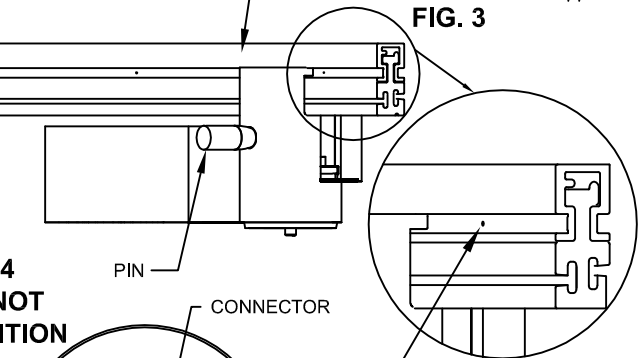


FIG. 4 DO NOT POSITION

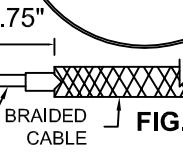
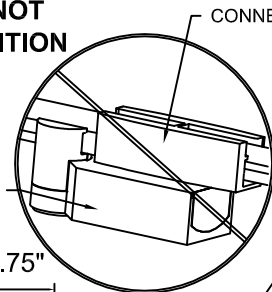


FIG. 6

FIG. 5

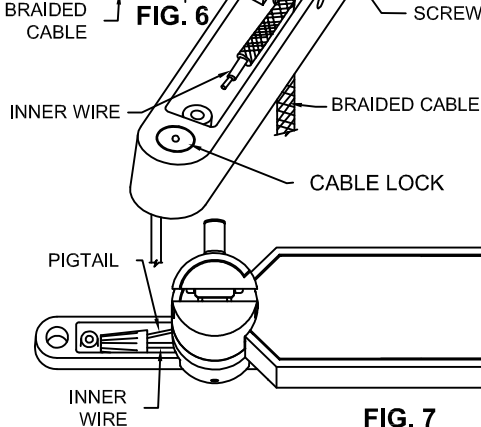


FIG. 7

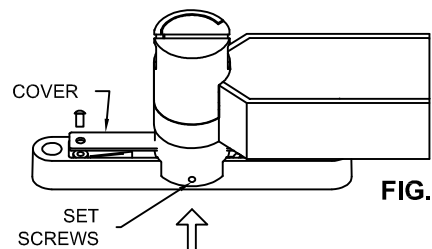


FIG. 8

Instruction Sheet Number **IS:FX16SC**

Page 2 of 2

For Assembly and Installation of FX16SC & FX16GC LUMINAIRE

Read and understand these instructions before installing luminaire.

This luminaire is intended for installation in accordance with the National Electrical Code and local regulations. To assure full compliance with local codes and regulations, check with your local electrical inspector before installation. To prevent electrical shock, turn off electricity at fuse box before proceeding.

Retain these instructions for maintenance reference.

INSTRUCTIONS FOR REMOVING ACCESSORY SNOOT ON FX16SC LOW VOLTAGE TANGENT™ LUMINAIRE

1. Turn power off to TRACK
2. While supporting the HOUSING, pull and drop SNOOT into open position.
3. To close SNOOT, support HOUSING and rotate SNOOT back into closed position until it snaps tight and is secure.

INSTRUCTION FOR CHANGING LAMP IN FX16SC

1. Turn power to TRACK off.
2. Remove ACCESSORY SNOOT.
3. Insert the 2 LAMP PINS into the SOCKET HOLES (Use **12V MR16 50W MAX. or 37W MAX. IR**)
4. Re-assemble ACCESSORY SNOOT onto HOUSING (Fig. 9).

DO NOT OPERATE WITHOUT LENS

INSTRUCTIONS FOR CHANGING LAMP FX16GC

1. Turn power to TRACK off.
2. While supporting HOUSING push up on GLASS and rotate counter-clockwise to release GLASS from lock position and remove.
3. Insert the 2 LAMP PINS into SOCKET HOLES (Use **12V MR16 50W MAX. or 37W MAX. IR**)
4. To place GLASS in locked position support HOUSING push glass into HOUSING and rotate clockwise until locked. (Fig. 10)

DO NOT OPERATE WITHOUT GLASS SHADE IN PLACE.

CAUTION: RISK OF BURN. Allow time for luminaire to cool before touching track head for relamping or positioning.

INSTRUCTIONS FOR INSTALLING ACCESSORIES INTO ACCESSORY SNOOT ON FX16S

1. Turn off power to TRACK.
2. Remove ACCESSORY SNOOT.
3. Remove ACCESSORY SPRING by squeezing together and pulling out of SNOOT as shown.

Note: When using accessory LENS, remove clear glass LENS from SNOOT before installing accessory.

4. Insert accessories as shown. If using a LOUVER or SNOOT, they must be installed first, then a LENS is inserted on top of them.

NOTE: ACCESSORY SNOOT accepts 2 total accessories (1 LENS plus either 1 LOUVER or 1 SNOOT).

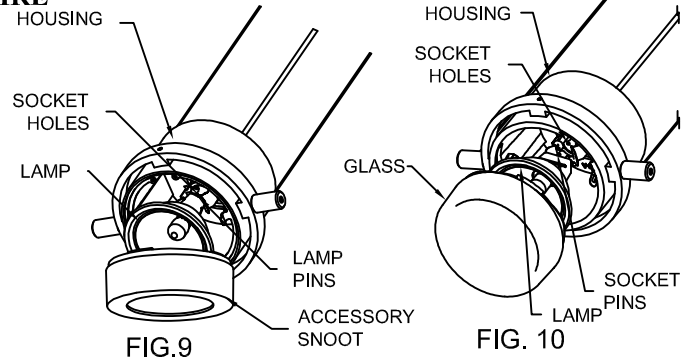
5. Reinstall ACCESSORY SPRING by squeezing together and pushing into SNOOT. Assure that all 4 SPRING TABS are flat against lens.
6. Reassemble ACCESSORY SNOOT onto HOUSING as shown on PAGE 1.

INSTRUCTIONS FOR POSITIONING LOW VOLTAGE TANGENT™ LUMINAIRES

1. Turn off power to TRACK allowing time for luminaire to cool.
2. Rotate SUSPENDED BAR horizontally. For vertical rotation hold PIVOTS & rotate as shown.

NOTE: Luminaires rotate infinite horizontally and 90° vertically. Forcing past vertical rotation stop could permanently damage luminaire.

CAUTION: USE ONLY LAMP WATTAGE AND TYPE AS MARKED ON LUMINAIRE.



*FX16GC DOES NOT ACCEPT ACCESSORIES

Accessories

Accessory Holder:	Integral
Accessories:	Accepts two total (1 lens plus either 1 louver or 1 snoot)
Lens:	AF2 or ADF2 Series
Louver:	AL2HC
Snoot:	22SR6

DIMMING: USE DIMMER SPECIFIED FOR LOW VOLTAGE ELECTRONIC TRANSFORMER. MAY PRODUCE AUDIBLE SOUND WHEN DIMMED.

