

# LUMEC

by  Signify

Roadway

HighFocus Plus

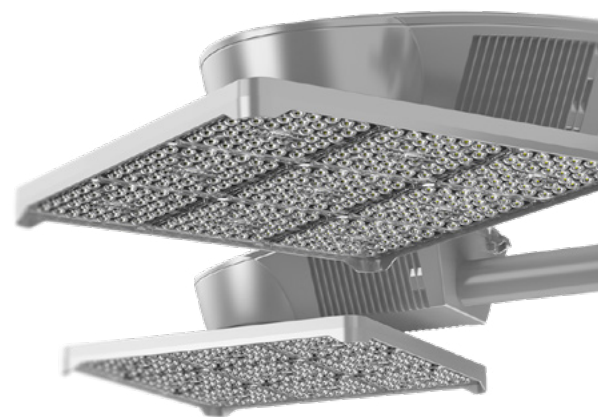
High-mast luminaires



## High performance, High efficacy, High value

Lumec HighFocus Plus LED High-mast fixture provides long system life and up to 65% energy reduction over traditional HID products.

HighFocus Plus LED offers the flexibility of multiple lumen packages, integrated control options as well as both roadway and area lighting optical distributions – all providing the customer with choices on light levels and energy savings when replacing 400–1000+ watt HID products. This LED high-mast fixture is designed to excel for both retrofit and new construction. Configurations are connect-ready, and available in multiple lumen packages, color temperatures, as well as a complete array of optical distributions. Available with a wide variety of advanced control options as well as an HVX feature to enhance power quality protection of 277–480V operation.



### Ideal for a variety of applications

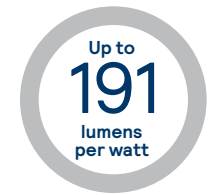
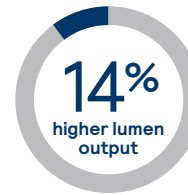
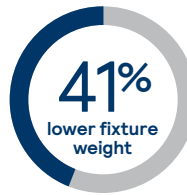
- Major highways & interchanges
- Ports & storage container facilities
- Large industrial facilities & parking
- Stadium parking areas
- Military bases
- Correctional facilities
- Rail yards
- Toll plazas
- Airports

# HF HighFocus Plus

## High-mast luminaires

### Configurable to meet ambitious lighting needs

HighFocus Plus LED utilizes the latest in LED technology to deliver over 139,000 lumens with efficacies reaching 191 lumens per watt.



#### Die cast housing:

Rugged die-cast aluminum housing for maximum durability.

#### Drivers:

The 0-10V dimming driver is standard and D4i certified drivers are optional, enabling controls to be added now or in the future.

#### Surge protection:

Standard SP1 and optional SP2 surge suppressors that protect the luminaire with fail-on or fail-off options.

#### Interact Node (optional):

Provides plug & play wireless communications technology to connect street lighting to Interact lighting management.

#### Twist lock receptacle:

Tool-free 7-pin NEMA twist lock receptacle facilitates connected lighting solutions that can quickly and easily be upgraded in the future (IP65 rated photo controls).

#### IP66 rated light engine:

Reliable light engines that are IP66 sealed to protect against dust and moisture so the LED life is extended.

### Notable features



#### Field adjustable watt selector

Can be operated even while wearing lineman's gloves, providing tactile audible and visual switch position markers.



#### Service Tag

Includes Service Tag, an innovative way to provide assistance throughout the life of the product.



#### Outdoor Multisensor

Enables advanced adaptive lighting management and environmental monitoring sensors. Motion detection, temperature and noise levels can all be monitored.



#### Sensor ready

Optional D4i and SR drivers add flexibility for connecting now or in the future. D4i driver requires Zhaga socket (TLRSR), Socket ships with a protective cap as shown on the left.

### Key benefits include

- Die-cast aluminum housing
- Bridge & overpass vibration rating
- IP65 rated electrical compartment
- IP66 rated light engines
- Dimming driver standard (HVX 277 - 480 volt optional)
- Surge protection
- Optional twist-lock receptacle
- Shielding tool-less
- Rotatable Optics



© 2023 Signify Holding. All rights reserved. The information provided herein is subject to change, without notice. Signify does not give any representation or warranty as to the accuracy or completeness of the information included herein and shall not be liable for any action in reliance thereon. The information presented in this document is not intended as any commercial offer and does not form part of any quotation or contract, unless otherwise agreed by Signify.

Signify North America Corporation  
400 Crossing Blvd, Suite 600  
Bridgewater, NJ 08807  
Telephone 855-486-2216

Signify Canada Ltd.  
281 Hillmount Road,  
Markham, ON, Canada L6C 2S3  
Telephone 800-668-9008

All trademarks are owned by Signify Holding or their respective owners.