

# ALKCO

## Healthcare

### RelaxView LED Graphic Ceiling Illuminator

4200K



Alkco's Graphic Ceiling Illuminators make an ideal lighting solution for any health-care imaging space. This fixture best suits spaces with non-ferrous construction and EMI control requirements. Specifically, designed with backlight images in T-bar ceilings. The unique housing is placed on top of graphic panels and suspended on the T-bar grid. This offering supports a relaxing environment through its clean aesthetic and uniform light appearance ultimately providing patients with comfort, calmness and ease during imaging experiences.

Project: \_\_\_\_\_  
 Location: \_\_\_\_\_  
 Cat.No: \_\_\_\_\_  
 Type: \_\_\_\_\_  
 Lamps: \_\_\_\_\_ Qty: \_\_\_\_\_  
 Notes: \_\_\_\_\_

#### Ceiling Illuminator ordering guide

example: RVGC22G-42-SWH-1-222

Model Number	LED Color Temp.	Finish	Graphic Mounting <sup>2</sup>	Configuration
—	42 —	—	1 —	
RVGC22G 2x2 Grid Model RVGC24G 2x4 Grid Model	42 4200K	SWH Soft white CC <sup>1</sup> Custom color	1 Outside Frame	221 1-2x2 222 2-2x2 223 3-2x2 224 4-2x2 226 6-2x2 229 9-2x2 241 1-2x4 242 2-2x4 243 3-2x4 244 4-2x4 246 6-2x4 See page 3 for descriptions.

#### Footnotes:

<sup>1</sup> Customer to provide color chip to match.

<sup>2</sup> Graphics can be installed and sealed in illuminator housing. Consult factory for details.



# RVGC Relaxview Graphic Ceiling Illuminator

4200K

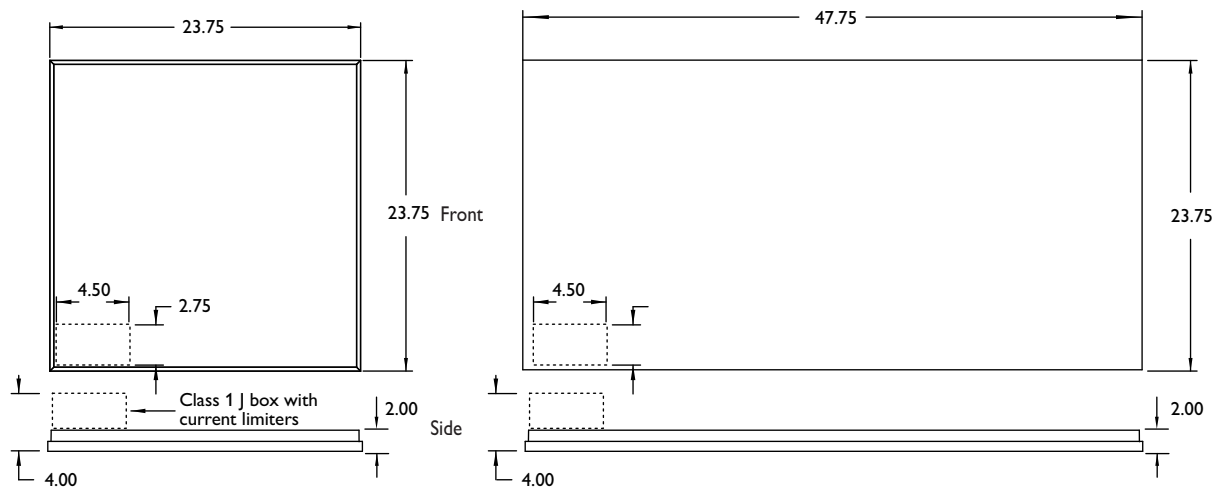
## Features

- Easy installation and requires minimal maintenance.
- Long life LED source.
- Available in neutral white 4200K.
- Available for grid or flange ceiling installations.
- Agion® antimicrobial finish.
- Class 1 low voltage installation.
- Dimming option available on RelaxView Power Distribution Module PDM.
- On/Off and 5 level dimming control available with addition of RelaxView Intelligent Wall Dimmer IWD.

## Specifications

- **Construction:** Non-ferrous construction. Extruded aluminum housing with a 1/8" white acrylic lens.
- **Finish:** The housing has a polyester powder-coat paint finish with an Agion® antimicrobial finish.
- **Light Source:** LED source densely populated for lower power consumption and uniformity, attached to heat-sink for maximum performance and reliability.  
The LED source is available in 4200K white.
- **Electrical:** RelaxView is powered by remote Class 1 low voltage power distribution module(s) (sold separately). Dimming is available. The RelaxView panels do not include a DC power supply. Remote modular Power Distribution Module PDM needed with or without dimmer.
- **Installation:** Easy installation into standard grid or hard ceilings.
- **Listing:** Components are CE or ETL listed and RoHS compliant.
- **Warranty:** Fixture warranted against defects for 5 years from original date of purchase.

## Dimensions



# RVGC Relaxview Graphic Ceiling Illuminator

## 4200K

### Configurations

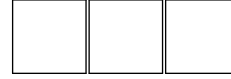
221



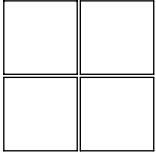
222



223



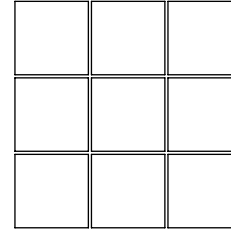
224



226



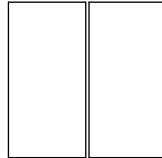
229



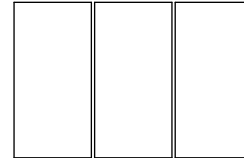
241



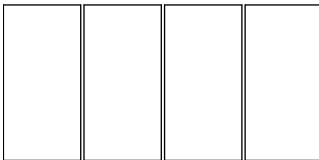
242



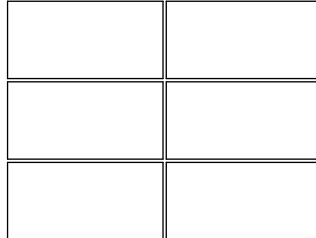
243



244



246



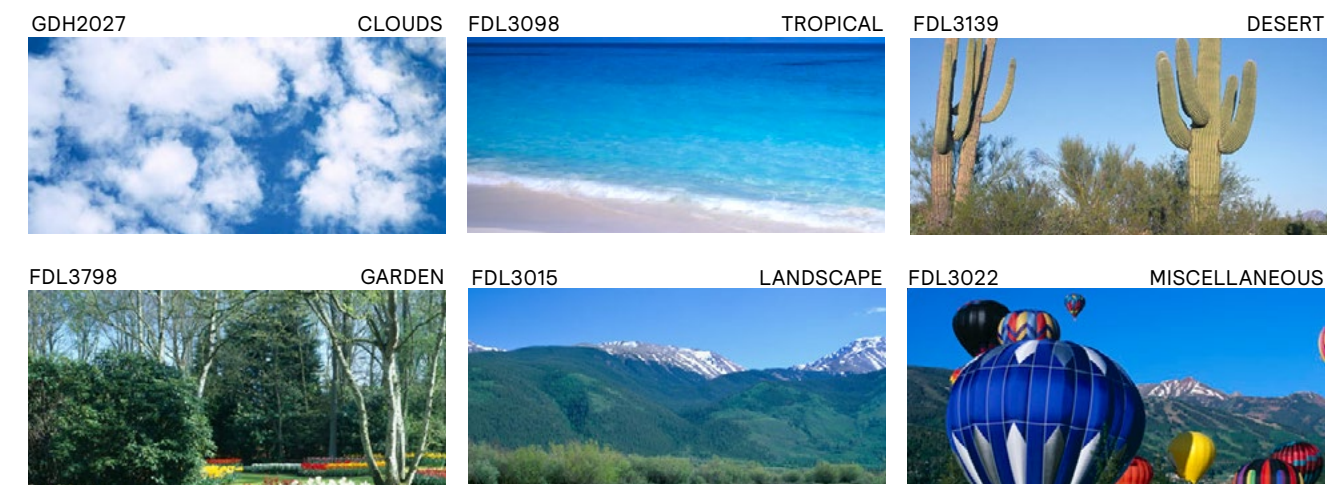
### Configuration descriptions

Configuration	Graphic Size		Panel Size		Trim between panels (in.)	Power (W) @24VDC
	Length	Width	Length	Width		
221	23.56	23.56	23.56	23.56	0.44	46.1
222	47.56	23.56	23.56	23.56	0.44	92.2
223	71.56	23.56	23.56	23.56	0.44	138.3
224	47.56	47.56	23.56	23.56	0.44	184.4
226	71.56	47.56	23.56	23.56	0.44	276.6
229	71.56	71.56	23.56	23.56	0.44	414.9
241	47.56	23.56	47.56	23.56	0.44	92.2
242	47.56	47.56	47.56	23.56	0.44	184.4
243	71.56	47.56	47.56	23.56	0.44	276.6
244	95.56	47.56	47.56	23.56	0.44	368.8
246	95.56	71.56	47.56	23.56	0.44	553.2

# RVGC Relaxview Graphic Ceiling Illuminator

## 4200K

### Scene choices



### Ceiling Scene ordering guide

example: GDH2027-BCA

Scene Number <sup>1</sup>	Graphic Protection
—	<div>BCA</div> —
GDH2027 Clouds FDL3098 Tropical FDL3139 Desert FDL3798 Garden FDL3015 Landscape FDL3022 Miscellaneous XXXXXXX TBD	BCA Back, clear acrylic

Footnotes:

<sup>1</sup> Other scenes available upon request.

### Buy American Act of 1933 (BAA):

This product is manufactured in one of our US factories and, as of the date of this document, this product was considered a commercially available off-the-shelf (COTS) item meeting the requirements of the BAA. This BAA designation hereunder does not address (i) the applicability of, or availability of a waiver under, the Trade Agreements Act, or (ii) the “Buy America” domestic content requirements imposed on states, localities, and other non-federal entities as a condition of receiving funds administered by the Department of Transportation or other federal agencies. Prior to ordering, please visit [www.signify.com/baa](http://www.signify.com/baa) to view a current list of BAA-compliant products to confirm this product’s current compliance.



© 2023 Signify Holding. All rights reserved. The information provided herein is subject to change, without notice. Signify does not give any representation or warranty as to the accuracy or completeness of the information included herein and shall not be liable for any action in reliance thereon. The information presented in this document is not intended as any commercial offer and does not form part of any quotation or contract, unless otherwise agreed by Signify.

Signify North America Corporation  
400 Crossing Blvd, Suite 600  
Bridgewater, NJ 08807  
Telephone 800-555-0050

Signify Canada Ltd.  
281 Hillmount Road,  
Markham, ON, Canada L6C 2S3  
Telephone 800-668-9008

All trademarks are owned by Signify Holding or their respective owners.