

Day-Brite

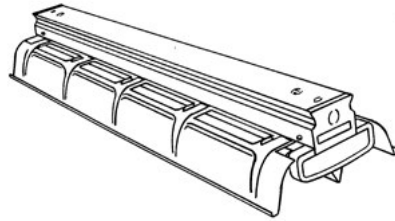
CFI

by Signify

Industrial

2F specification

T8



Project: _____

Location: _____

Cat.No: _____

Type: _____

Lamps: _____ Qty: _____

Notes: _____

The Day-Brite / CFI 2F specification industrial is a heavy duty turret industrial fluorescent luminaire providing 25% uplight with a center "V" giving 30° crosswise sheilding.

Ordering guide

Example: 2F232-PP-UNV-1/2-EBLHE

Family	No. of Lamps per Cross Section	Lamp Type	Reflector Options	Voltage	Options
	2	32	—	—	
2F Spec. Industrial (25% uplight) T2F Tandem Unit	(not included) 2	32 32W T8 (48")	PP Painted Polyester PPS Painted Polyester solid top	UNV Universal voltage 120/277V 120 120V 277 277V 347 347V	1/2 One 2-lamp ballast 1/4 One 4-lamp ballast 2/2 Two 2-lamp ballasts EB Electronic ballast, <10% THD EB10R Electronic ballast, program rapid start, <10% THD EBHE Electronic ballast, high efficiency, std. ballast factor EBLHE Electronic ballast, high efficiency, low ballast factor EBHHE Electronic ballast, high efficiency, high ballast factor E1 B100 emerg. ballast, 350-450 lumens, 120/277V E1CAN B100-CAN emerg. ballast, Canada market, 350-450 lumens, 120/347V E7 B60 emerg. ballast, 600-700 lumens, 120/277V E5 B50 emerg. ballast, U.S. or Canada market, 1100-1400 lumens, UNV ESCAN B50-CAN emerg. ballast, Canada market, 1100-1400 lumens, 120/347V ES5T B50ST emerg. ballast w/self test, 1100-1400 lumens, UNV GLR Fusing, fast blow LT20 -20° F start option (use in conjunction with ballast option)
Power Connect modular wiring available, see sheet 1604-OA for details					

Accessories (order separately)

- **CS-400** Rigid Canopy
- **CS-500** 42" Top Swivel Canopy
- **CS-12** 12" Stem
- **CS-18** 18" Stem
- **CS-24** 24" Stem
- **CS-30** 30" Stem
- **CS-36** 36" Stem
- **CS-48** 48" Stem
- **FL-111** Sliding hanger, conduit/stem/screw
- **FL-117** Hook, chain (requires FL-111)
- **FL-119** Hook, messenger cable (requires FL-111)
- **FL-123** 5' chain (w/S-hooks) set
- **FL-173** 4' wire guard (use 2 for 8')
- **FL-3** Channel coupling
- **FL-5** Reflector end cap (pair)
- **N-3381** Universal joint aligner, octagonal box, 3/4" I.P.S.



2F Specification industrial

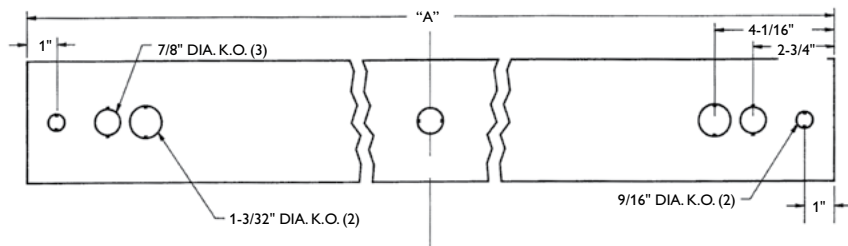
Construction/Finish

- Reflectors provide 25% uplight. Solid tops are available.
- Multiple knockouts for convenient installation.
- Heavy duty channel of code gauge die formed steel,
- Reflectors have stiffening ribs for rigidity and provide 30° crosswise shielding.
- Twist-lock reflector thumb screws.
- Continuous rows utilize a simple concealed coupling, FL-3 (optional).

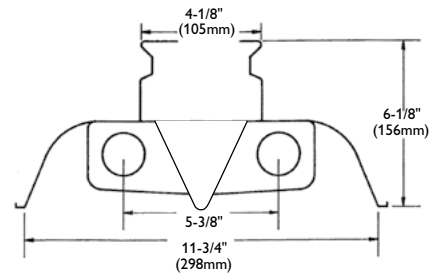
Electrical

- cULus listed for direct mounting on low density ceilings and damp locations.
- Self-contained fluorescent emergency power packs can be incorporated.
- Spring-loaded turret lampholders provide positive lamp engagement and electrical contact.

Dimensions



DIM "A"		
4' Channel	(1274mm)	50-5/32"
8' Channel	(2548mm)	100-5/16"



2F Specification industrial

Photometry

2F 4' 2 Lamp F32T8

Efficiency – 90.4%

LER – 79

TER – 45

		Candlepower				Light Distribution				Average Luminance			
		Angle	End	45	Cross	Degrees	Lumens	% Lamp	% Luminaire	Angle	End	45'	Cross
Catalog No.	2F232-PP-1/2-EB					0-30	1110	19.1	21.2	45	3271	3751	3513
Test No.	42358	0	1375	1375	1375	0-40	1856	32.0	35.4	55	3159	3432	2330
S/MH	1.4	5	1378	1377	1377	0-60	3284	56.6	62.6	65	2992	2200	1730
Lamp Type	F32T8	15	1330	1360	1367	0-90	4028	69.5	76.8	75	2672	1686	1619
Lumens/Lamp	2900	25	1236	1288	1328	90-180	1215	20.9	23.2	85	1877	2190	2389
Ballast Factor	0.92	35	1103	1196	1259	0-180	5243	90.4	100.0				
Input Watts	61	45	933	1070	1002								
		55	731	794	539								
		65	510	375	295								
		75	279	176	169								
		85	66	77	84								
		95	14	51	59								
		105	70	81	95								
		115	169	131	117								
		125	267	214	188								
		135	361	276	277								
		145	437	287	330								
		155	500	299	317								
		165	540	411	345								
		175	560	548	526								
Comparative yearly lighting energy cost per 1000 lumens – \$3.04 based on 3000 hrs. and \$.08 pwr KWH.													
The photometric results were obtained in the Day-Brite laboratory which is NVLAP accredited by the National Institute of Standards and Technology.													

Coefficients of Utilization												
EFFECTIVE FLOOR CAVITY REFLECTANCE 20 PER (pfc=0.20)												
	80			70			50					
pcc												
pw	70	50	30	70	50	30	50	30				
RCR												
0	103	103	103	97	97	97	89	89				
1	93	90	85	89	85	81	78	75				
2	84	78	72	81	75	69	68	64				
3	78	68	61	73	66	59	59	55				
4	70	60	54	68	58	52	54	47				
5	66	55	46	61	52	45	47	41				
6	60	48	40	56	46	40	42	36				
7	56	44	36	53	42	35	39	33				
8	52	40	33	48	39	32	35	29				
9	47	36	29	46	35	28	33	27				
10	45	34	27	42	33	26	29	25				



Some luminaires use fluorescent or high intensity discharge (HID) lamps that contain small amounts of mercury. Such lamps are labeled, "Contain Mercury" and/or the symbol "HG". Lamps that contain mercury must be disposed of in accordance with local requirements. Information regarding lamp recycling and disposal can be found at www.lamprecycle.org

