

# Day-Brite

## CFI

by Signify

### Special Application

Enviroguard Tube

Food Processing T8 or T8HO



Project: \_\_\_\_\_  
 Location: \_\_\_\_\_  
 Cat.No: \_\_\_\_\_  
 Type: \_\_\_\_\_  
 Lamps: \_\_\_\_\_ Qty: \_\_\_\_\_  
 Notes: \_\_\_\_\_

The Day-Brite / CFI Enviroguard Tube is a totally sealed and easily cleaned hosedown luminaire suited for inspection areas, food plants, and laboratories.

#### Ordering guide

Example: ETP1P4H2F32U-1/2-EB

Family	Series	Service	Length	Lens	No. of Lamps	Lamp Type	Voltage	No. of Ballasts	Ballast Type	Options
<b>ETP</b>		<b>P</b>		<b>H</b>			—	—	—	
<b>ETP</b> Enviroguard Tube	1 Standard unit 2 Up and Down Light	<b>P</b> High Pressure Hose	2 2' (2 lamps) 4 4' (2-3 lamps) 8 8' (2-6 lamps)	<b>H</b> DR Acrylic	2 3' 4 6'	<b>F17</b> 17WT8 (24") <b>F32</b> 32WT8 (48") <b>F44</b> 44WT8HO (48") <b>F54</b> 54WT5HO* (46") <b>F59</b> 59WT8 (96") <b>F86</b> 86WT8HO (96")  *Note: Amalgam T5HO-C provides 90%+ output with air temp inside the fixture from 50°F - 165°F.	<b>U</b> Universal voltage, 120-277V <b>1</b> 120V <b>2</b> 277V <b>3</b> 347V	1/2 One 2-lamp ballast 1/3 One 3-lamp ballast 1/21 2-lamp & 1-lamp ballasts 1/4 One 4-lamp ballast 2/2 Two 2-lamp ballasts 3/2 Three 2-lamp ballasts 1/42 4-lamp & 2-lamp ballasts	<b>EB</b> Electronic ballast <10% THD <b>EB10R</b> T8 electronic ballast, program rapid start, <10% THD <b>EBHHE</b> T8 electronic ballast, high efficiency, high ballast factor	<b>QDP</b> Quick disconnect hosedown power cord set <b>E7</b> B60 emerg. ballast, T8, 600-700 lumens, 120/277V <b>E5</b> B50 emerg. ballast, U.S. or Canada market, T8, 1100-1400 lumens, UNV -20°F start option <b>LT20</b> <b>VPR</b> Narrow Beam Reflector

#### Footnotes

<sup>1</sup>Only F32 T8 and F54 T5HO with 3 and 6 lamps.

#### General Notes

- Consult factory for corrosion resistance info. for acrylic and stainless steel.
- Many luminaire components, such as reflectors, refractors, lenses, sockets, lampholders, and LEDs are made from various types of plastics which can be adversely affected by airborne contaminants. If sulfur based chemicals, petroleum based products, cleaning solutions, or other contaminants are expected in the intended area of use, consult factory for compatibility



# ETP Enviroguard Tube hosedown luminaire

Food Processing, T8 or T8HO

## Standards

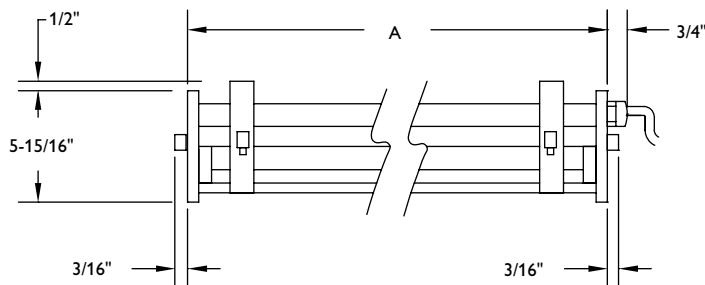
- Certified to meet UL 1598 standards for wet location.
- NSF is standard.

## Construction/Finish

- Sealed hosedown luminaire available in 3 sizes with stainless steel hardware and impact resistant non-yellowing acrylic lens for durability and easy clean-up.
- Aluminum internal components.
- Removable stainless steel end caps protect plastic and allow ballast and lamp access.
- Rotate and aim optics inside adjustable stainless steel mount straps.
- One piece high temperature silicone gasket for tight seal.
- Pre-wired with 3' pigtail and wet cord grip.
- Optional hosedown quick disconnect power cord set.
- Internal Blondel flutes reduce glare.
- Optional Vision + reflector focuses light on task.
- Optional 3rd lamp provides uplight.
- Suitable for 1200psi hosedown.

## Dimensions

Dim	2'	4'	8'
A	26-3/8" (669.9 mm)	50-3/8" (1279.5 mm)	98-3/8" (2498.7 mm)



**Note:** For technical information or codes and classifications, see PDFs Tech1-Tech5 online.



Some luminaires use fluorescent or high intensity discharge (HID) lamps that contain small amounts of mercury. Such lamps are labeled, "Contain Mercury" and/or the symbol "HG". Lamps that contain mercury must be disposed of in accordance with local requirements. Information regarding lamp recycling and disposal can be found at [www.lamprecycle.org](http://www.lamprecycle.org)

