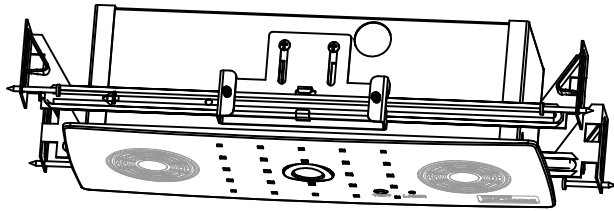


# CLUR3 INSTRUCTIONS SHEET CHLORIDE

by Signify



## IMPORTANT SAFEGUARDS

When using electrical equipment, basic safety precautions should always be followed, including the following:

## READ AND FOLLOW ALL SAFETY INSTRUCTIONS

- Maximum mounting height is 10 feet. For installations greater than 10 feet, consult factory to ensure that adequate illumination will be available on the path of egress.
- All servicing should be performed by qualified personnel only.
- Do not use this equipment outdoors.
- Equipment should be mounted in locations and at heights where it will not readily be subjected to tampering by unauthorized personnel.
- The use of accessory equipment not recommended by the manufacturer may cause an unsafe condition.
- Do not let power supply cords touch hot surfaces.
- Do not mount near gas or electric heaters.
- CAUTION: To avoid electrical overload, total connected lamp load (factory and field installed) should not exceed output rating.
- Do not use this equipment for other than intended use.

## SAVE THESE INSTRUCTIONS

Shut off AC power to branch circuits to which units will be connected. All wiring should be per National Electrical Code and local regulations.

## GENERAL INSTRUCTIONS

### MAINTENANCE

None required. Replace the batteries as needed. However, we recommend that the equipment be tested regularly in accordance with local codes.

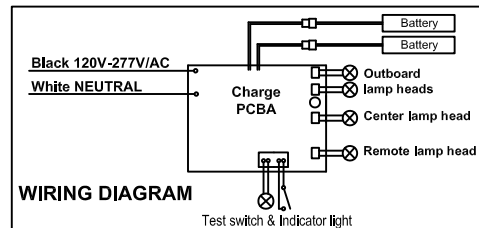
### OPERATION

Press and release the test button. The LED heads will turn on and the LED indicator will flash. After 30 seconds, the LED heads will turn off and the LED indicator will stay on.

### TROUBLE SHOOTING GUIDE

If LED heads or LED indicator does not illuminate, check the following:

1. Check AC supply. Ensure that AC branch circuit is energized.
2. Battery is shorted or battery is not connected.
3. Battery is discharged. Permit unit to charge for 24 hours then re-test.
4. If above trouble shooting hints do not solve any problem, contact factory for assistance.



## Mounting Instructions

	<p>4. Cut a 10.75" x 3.75" opening in the mounting surface.</p>
<p>1. Rotate the lamp heads to reveal the screw under each. Remove and save these screws.</p>	<p>5. Reconnect hook wires to trim plate assembly. Connect black and white wires from charger to AC supply wires (see Wiring Diagram below).</p>
<p>2. Gently pull or pry trim plate from steel back box. Detach hook wires found on other side of the plate. Set trim plate assembly aside. Remove conduit knockouts as desired and attach AC supply conduit to steel backbox.</p>	<p>6. Connect male connectors of battery assemblies to female connectors on leads coming from PCBA. Make remote head connections if applicable (see page 4).</p>
<p>3. For stud installation: Install steel back box between studs and fasten with nails provided in the bar hangers for wood studs or screw bar hangers to studs for steel studs. Ensure that the open end of the steel back box stands above the studs by the thickness of the sheetrock that will be used.</p> <p>For recessed ceiling installation: Place bar hangers over T-grid and attach support wires to structural ceiling. Open end of back box should be flush with installed ceiling panels.</p>	<p>6. Snap trim plate onto steel back box and secure with screws removed in step 1. See step 1 for proper location to push to adjust lamp heads as desired.</p>
<p>Adjust hanger bar after loose this screws, tighten screws after fix position.</p>	<p><b>Wiring Diagram</b></p> <p>AC INPUT</p>

# CLUR3 INSTRUCTIONS SHEET

## INSTALLATION INSTRUCTION

### SELF-DIAGNOSTICS/SELF-TESTING OPTION

## SAVE THESE INSTRUCTIONS

When AC power is supplied to fixture, the unit will automatically initiate a self-test and self-diagnostic test as follows:

### 1. Self-testing

- (1) One-minute self-testing every month
- (2) 30 minutes self-testing every six months

### 2. Self-diagnostics, dual color LED lamp Indicator shows the following status

- (1) Green color: ON: Normal  
Blinking: Testing

- (2) Red color (Service Alert)

- (3) Service Alert LED Code (Red color LED lamp indicator)

●	One blink ON/pause (4 seconds)	Battery is not connected
●●	Two blink ON/pause (4 seconds)	Battery is shorted or battery voltage has dropped below acceptable level
●●●	Three blink ON/pause (4 seconds)	Charger board circuit fault
●●●●	Four blink ON/pause (4 seconds)	transfer fault (transfer circuit fault)
●●●●●	Five blink ON/pause (4 seconds)	Emergency lamp fault
●●●●●●	Six blink ON/pause (4 seconds)	Remote head's emergency lamp fault (if installed)

### CAUTION:

After resolving any fault, press and hold the test switch for 2 seconds. The LED indicator will either be continuously glowing or blinking green indicating that the equipment is in charging mode.

### 3. For manual test, press test button as follows:

Press test button once	(within 2 seconds)	30 second test
Press test button twice	(within 2 seconds)	3 minutes test
Press test button 3 times	(within 2 seconds)	30 minutes test
Press test button 4 times	(within 2 seconds)	90 minutes test

### 4. Laser test facility (when applicable)

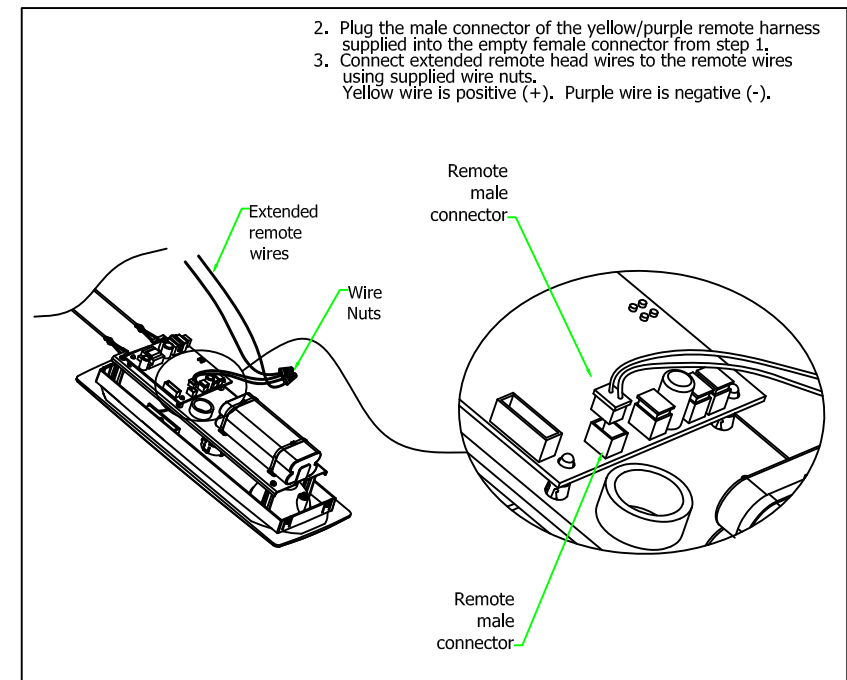
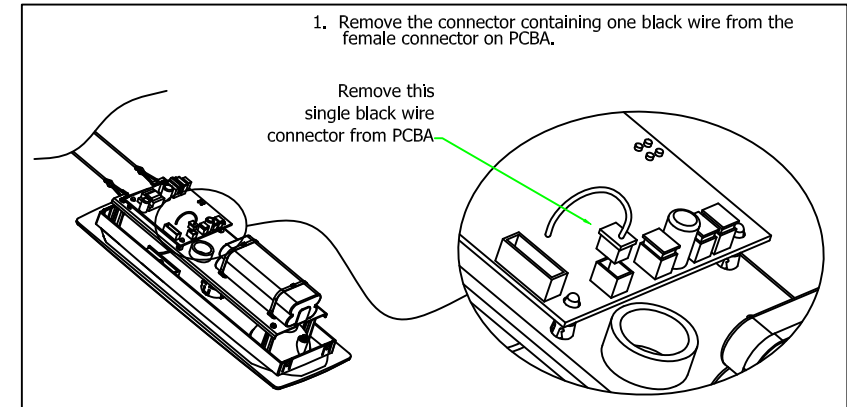
Unit will run a 30 second discharge test when activated by laser transmitter.

### 5. TD function (when applicable)

Unit will remain in discharge mode for 15 minutes after AC power is restored.

## Mounting Instructions

### 6. Installation instructions for remote lamp heads.



Signify North America Corporation  
200 Franklin Square Drive  
Somerset, NJ 08873, USA  
Tel. 855-486-2216  
www.chloride-lighting.com

© 2018 Signify Holding. All rights reserved. This document contains information relating to the product portfolio of Signify which information may be subject to change. No representation or warranty as to the accuracy or completeness of the information included herein is given and any liability for any action in reliance thereon is disclaimed. The information presented in this document is not intended as any commercial offer and does not form part of any quotation or contract. All trademarks are owned by Signify Holding or their respective owners.