

# Day-Brite

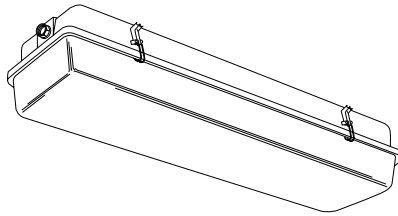
## CFI

by Signify

### Industrial

Vaporlume V2

2' sealed industrial,  
T5, T5HO, or T8



Project: \_\_\_\_\_  
 Location: \_\_\_\_\_  
 Cat.No: \_\_\_\_\_  
 Type: \_\_\_\_\_  
 Lamps: \_\_\_\_\_ Qty: \_\_\_\_\_  
 Notes: \_\_\_\_\_

Day-Brite / CFI Vaporlume sealed industrial V2 is a wet location listed luminaire with a fiberglass reinforced polyester housing, high impact DR acrylic lens and stainless steel cam action latches.

#### Ordering guide

Example: **V2WAE217-UNV-1/2-EBLHE**

Family	Application	Lens	Hubs Installed	No. of Lamps Per Cross Section	Lamp Type	Voltage	Options
<b>V2</b>	<b>W</b>				—	—	
V2 Vaporlume	<b>W</b> Wet Location	<b>A</b> DR Acrylic <b>P</b> Polycarbonate	<b>E</b> Ends only <b>T</b> Top only <b>B</b> Both ends and top	(not included) <b>1</b> <b>2</b>	<b>14</b> 14WT5 (22") <b>17</b> 17WT8 (24") <b>24HO</b> 24WT5HO (22")	<b>UNV</b> Universal voltage 120/277V <b>120</b> 120V <b>277</b> 277V <b>347</b> 347V	<b>1/1</b> One 1-lamp ballast <b>1/2</b> One 2-lamp ballast <b>EB</b> Electronic ballast, <10% THD <b>EB10R</b> T8 electronic ballast, program rapid start, <10% THD <b>EBHE</b> T8 electronic ballast, high efficiency, std. ballast factor <b>EBLHE</b> T8 electronic ballast, high efficiency, low ballast factor <b>EBHHE</b> T8 electronic ballast, high efficiency, high ballast factor <b>EBS</b> T8 electronic step dimming ballast, .88 ballast factor <b>EBD7</b> Advance Mark 7 dimming ballast, 0-10V (low voltage) control <b>EBDX</b> Advance Mark 10 dimming ballast, phase control <b>EBD</b> Electronic dimming ballast, customer specified <b>LT20</b> -20°F start option (T8, use in conjunction with ballast option) <b>E1</b> B100 emerg. ballast, T8, 350-450 lumens, 120/277V <b>E7</b> B60 emerg. ballast, T8, 600-700 lumens, 120/277V <b>GLR</b> Fusing, fast blow <b>MD360W</b> Wet location occupancy sensor, external <b>TR</b> Torx T-15 tamper resistant stainless steel latches (TPDTH tamper proof driver required)

#### Accessories (order separately)

- **TBK** Stainless Steel Top Bracket Kit (pair of brackets plus mounting hardware)
- **EBK** Stainless Steel End Bracket Kit (pair of brackets plus mounting hardware)
- **WBK** Stainless Steel Wraparound Kit (pair of brackets plus mounting hardware)
- **FKR-126** Chain hanger set (requires TBK)
- **TPDTH** Tamper proof driver, Torx T-15 head pin drive and handle (required with TR option)

See section 1600-OA for options info. and sheet 1455-IF for mounting hardware.



# V2 Vaporlume sealed industrial

2', T5, T5HO, or T8

## Application

- Acceptable for outdoor as well as indoor installations.
- Can be surface (wall/ceiling) or suspended mounted unless otherwise specified.
- Wet Location—Areas of high humidity, water vapor, rain, incidental water spray, or other non-corrosive or non-flammable liquid.
- IP65 rating standard.

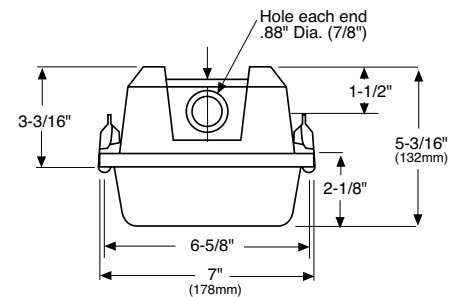
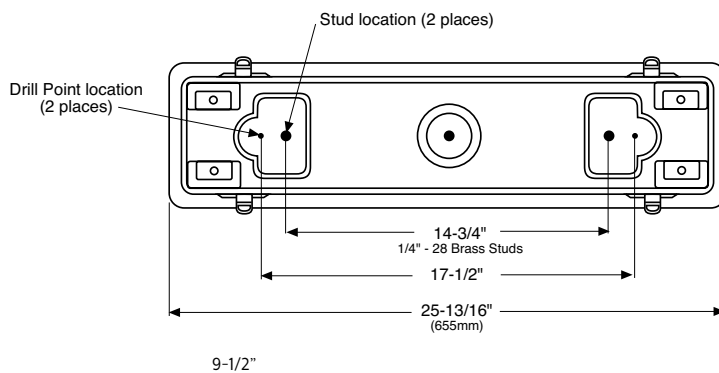
## Construction/Finish

- Non-conductive, non-corrosive housing.
- Smooth exterior surface for easy cleaning.
- Molded fiberglass reinforced polyester body.
- High impact DR acrylic molded lens.
- Continuous closed cell, foam in-place gasket.
- Stainless steel cam action latches standard.
- Lighting channel painted after fabrication with polyester powder coating.
- Wet location hubs installed.

## Electrical

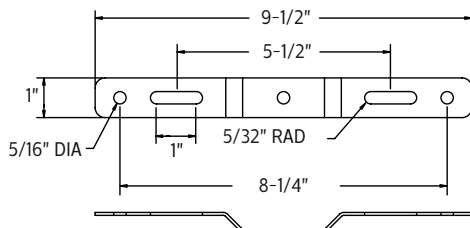
- cULus listed for wet locations. Also suitable for damp locations.
- Self-contained fluorescent emergency ballasts available.

## Dimensions

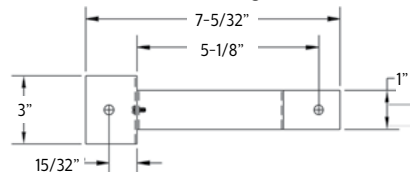


## Mounting Brackets

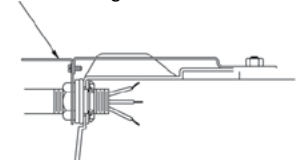
TBK - Top Mounting Bracket



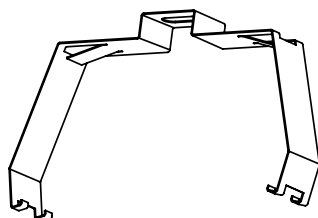
EBK - End Mounting Bracket



EBK - End Mounting Bracket



WBK - Wraparound Mounting Bracket



# V2 Vaporlume sealed industrial

2', T5, T5HO, or T8

## Photometry

### V2 2' 2 Lamp F20

Efficiency – 76.6%

LER – F-35

TER – 19

		Candlepower				Light Distribution				Average Luminance			
		Angle	End	45	Cross	Degrees	Lumens	% Lamp	% Luminaire	Angle	End	45'	Cross
<b>Catalog No.</b>	V2WAE220	0	466	466	466	0-30	368.	14.6	19.0	45	2970	3416	3703
<b>Test No.</b>	12122	5	454	462	469	0-40	610.	24.2	31.6	55	2679	3326	3717
<b>S/MH</b>	1.4	15	429	451	469	0-60	1127.	44.7	58.3	65	2405	3333	3933
<b>Lamp Type</b>	F20	25	384	427	457	0-90	1697.	67.3	87.9	75	2021	3384	4295
<b>Lumens/Lamp</b>	1260	35	325	395	430	90-180	234.	9.3	12.1	85	1414	3405	4686
<b>Ballast Factor</b>	.95	45	261	350	388	0-180	1931.	76.6	100.0				
<b>Input Watts</b>	53	55	197	301	346								
		65	137	252	309								
		75	78	198	265								
		85	27	135	201								
		95	15	89	143								
		105	13	64	104								
		115	9	43	68								
		125	5	26	39								
		135	3	14	22								
		145	1	7	11								
		155	1	3	5								
		165	2	3	2								
		175	1	2	2								
Comparative yearly lighting energy cost per 1000 lumens – <b>\$6.86</b> based on 3000 hrs. and \$.08 pwr KWH.													
The photometric results were obtained in the Day-Brite laboratory which is NVLAP accredited by the National Institute of Standards and Technology.													
						<b>Coefficients of Utilization</b>							
						<b>EFFECTIVE FLOOR CAVITY REFLECTANCE 20 PER (pfc=0.20)</b>							
						pcc				70			
						pw				50			
						RCR				30			
						1				70 50 30			
						2				70 50 30			
						3				70 50 30			
						4				70 50 30			
						5				70 50 30			
						6				70 50 30			
						7				70 50 30			
						8				70 50 30			
						9				70 50 30			
						10				70 50 30			



Some luminaires use fluorescent or high intensity discharge (HID) lamps that contain small amounts of mercury. Such lamps are labeled, "Contain Mercury" and/or the symbol "HG". Lamps that contain mercury must be disposed of in accordance with local requirements. Information regarding lamp recycling and disposal can be found at [www.lamprecycle.org](http://www.lamprecycle.org)

