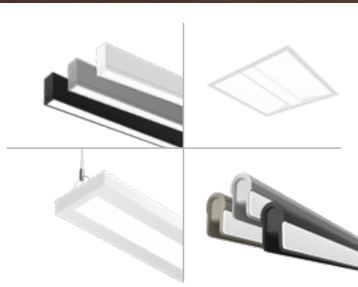




by @signify

Design ready

10-day QuickShip



Design ready

As the complexity of your projects skyrocket, faster delivery becomes increasingly important.

The Ledalite 10-day QuickShip program includes all of our high performance and award-winning LED linear, recessed, surface, and slot luminaire families.

Conditions

QuickShip must be requested when submitting an order and will be shipped within 10 working days

- **Linear Luminaires:** Limit of 500 linear ft per release
- **Recessed Troffers:** Limit of 100 luminaires per release

Exclusions

- Hold for Release or Do Not Ship Before orders
- Patterns or rows that require drawings
- All non-standard, 3rd party drivers and components
- Connected options (Interact Pro, PoE)
- Tunable White
- Thru-wiring for additional circuits
- 347V with Battery pack
- Surface mount only available in TruGroove and TruGroove micro
- Wall mount luminaires
- Air Return housing

Please refer to product spec sheets for all other product specific exclusions.

Table of contents

Architectural Linear

Suspended & Surface

| | |
|-------------------------------------|----|
| TruGroove Suspended | 6 |
| TruGroove Surface | 7 |
| TruGroove Suspended micro | 8 |
| TruGroove Surface micro | 9 |
| ModiFly Suspended | 10 |
| BoldPlay Suspended | 11 |
| Sync Suspended | 12 |
| Verge Suspended | 13 |
| Chopstick Suspended | 14 |
| Jump Suspended | 15 |
| Sona Suspended | 16 |
| FloatPlane Suspended | 17 |
| SyncLine Suspended | 18 |

Recessed, Cove, & Perimeter

| | |
|------------------------------------|----|
| TruGroove Recessed | 22 |
| TruGroove Recessed micro | 23 |
| TruGroove Cove | 24 |
| TruGroove Perimeter | 25 |

Architectural Recessed

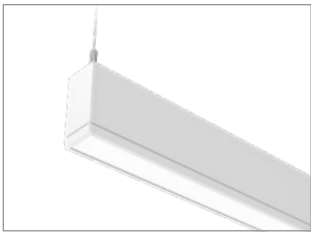
Recessed

| | |
|---|----|
| ArcForm Recessed | 30 |
| VersaForm Recessed | 31 |
| SilkSpace Recessed definition | 32 |
| SilkSpace Recessed | 33 |
| PureFX Recessed | 34 |
| Shine Recessed | 35 |
| Vectra Recessed | 36 |

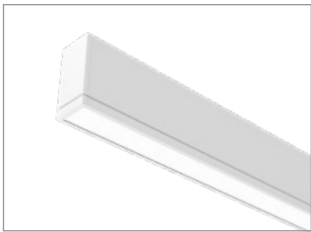


Architectural Linear

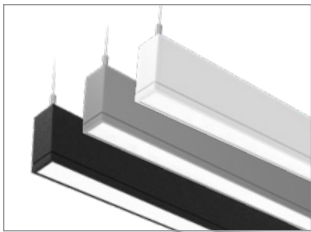
Suspended & Surface



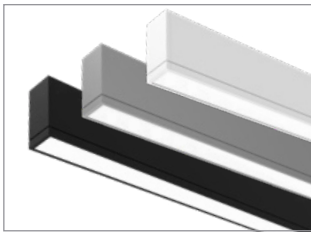
TruGroove
Suspended



TruGroove
Surface



TruGroove micro
Suspended



TruGroove micro
Surface



ModiFly
Suspended



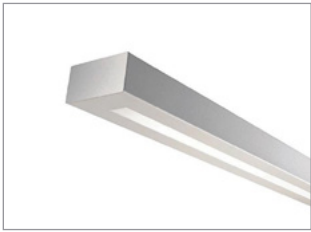
BoldPlay
Suspended



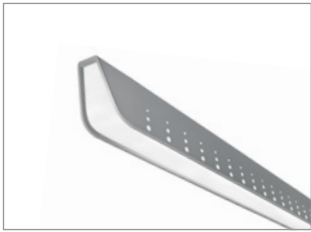
Sync
Suspended



Verge
Suspended



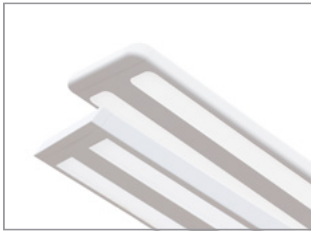
Chopstick
Suspended



Jump
Suspended



Sona
Suspended



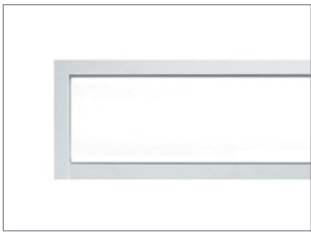
FloatPlane
Suspended



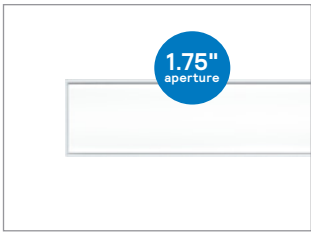
SyncLine
Suspended

Architectural Recessed

Recessed, Cove, & Perimeter



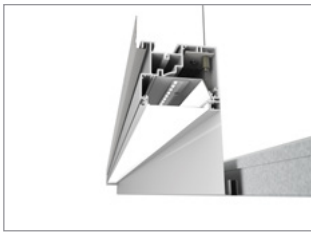
TruGroove
Recessed



TruGroove micro
Recessed

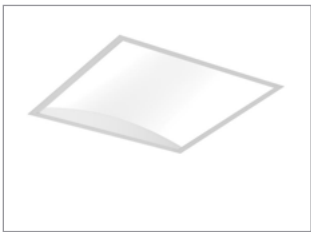


TruGroove cove



TruGroove perimeter

Recessed



ArcForm
Recessed



VersaForm
Recessed



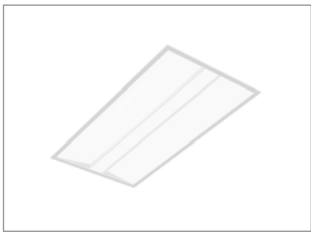
SilkSpace definition
Recessed



SilkSpace
Recessed



PureFX
Recessed



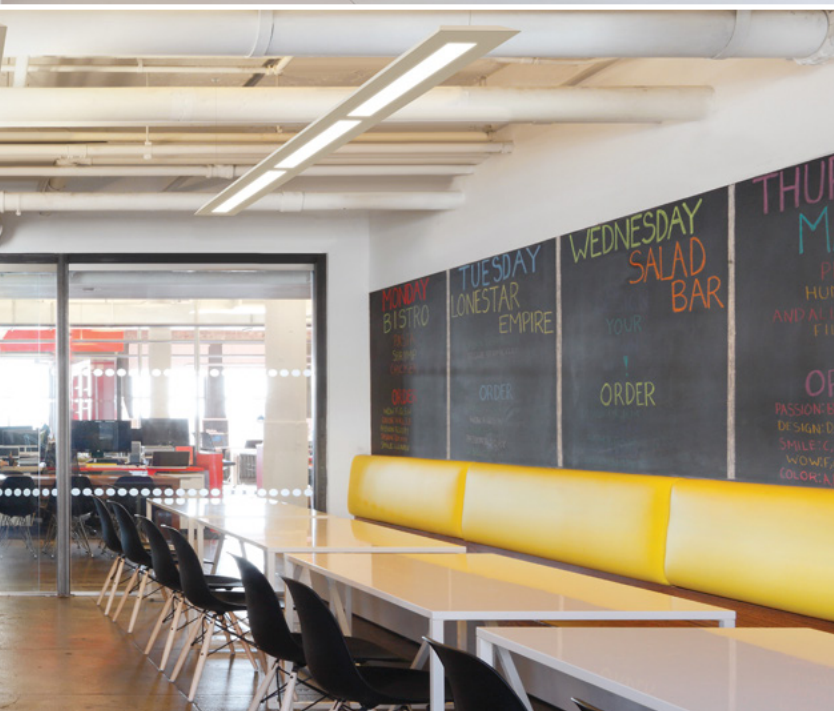
Shine
Recessed



Vectra
Recessed

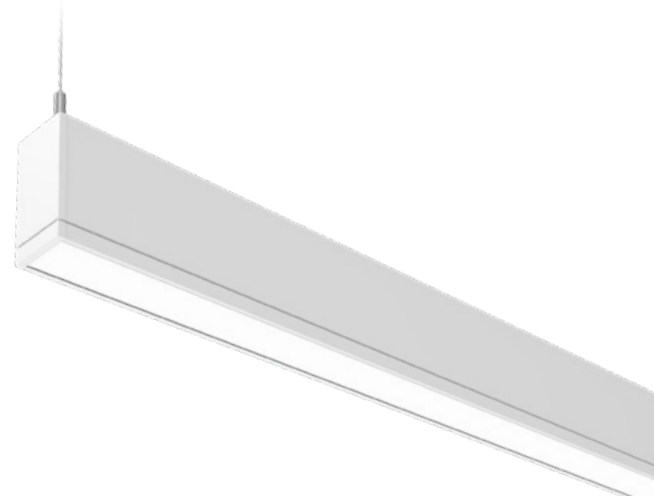
Suspended & Surface





TruGroove Suspended

Seamless 3" ribbon of light with **exceptional performance and versatility** for functional and decorative applications



Why choose TruGroove Suspended?

- Elevate performance to a whole new level in narrow aperture lighting
- Wide row spacing with fewer fixtures and less energy consumption
- Ideal for a variety of applications with multiple distributions and modules
- MesoOptics DX and innovative optics producing an optimal batwing distribution



Ordering guide

| Family | Version | Distribution | Source | CRI/CCT | |
|--------------------------|-----------------------------------|---|---|---|-----------------|
| 29 TruGroove | 0 Suspended | 1 Direct | L LED | 950 CRI 90, 5000K | |
| | | 3 Indirect | | 940 CRI 90, 4000K | |
| | | 5 Indirect/Direct | | 935 CRI 90, 3500K | |
| | | 6 Direct/Indirect | | 930 CRI 90, 3000K | |
| | | | | 927 CRI 90, 2700K | |
| Lumens | Optics | | | Run Length | |
| 40 4000lm/4ft | LN | Definition symmetric flush silk lens (Dn) | | 02 2ft | |
| 30 3000lm/4ft | QN | Performance symmetric flush MesoOptics lens (Dn) | | 04 4ft | |
| 22 2200lm/4ft | WN | Performance asymmetric wall wash flush MesoOptics lens (Dn) | | 06 6ft | |
| 15 1500lm/4ft | | | | 08 8ft | |
| 48 4800lm/4ft | NQ | Performance symmetric lens (Up) | | XX Continuous run in 2ft increments (please specify length) | |
| 32 3200lm/4ft | NW | Performance asymmetric lens (Up) | | | |
| 68 6800lm/4ft (70% up) | LQ | Definition symmetric flush silk lens (Dn) | | | |
| 52 5200lm/4ft (60% up) | | Performance symmetric lens (Up) | | | |
| 46 4600lm/4ft (70% up) | | | | | |
| 35 3500lm/4ft (60% up) | QQ | Performance symmetric MesoOptics lens (Dn) | | | |
| 68 6800lm/4ft (60% down) | | Performance symmetric lens (Up) | | | |
| 52 5200lm/4ft (60% down) | | | | | |
| 46 4600lm/4ft (70% down) | WW | Performance asymmetric wall wash MesoOptics lens (Dn) | | | |
| 35 3500lm/4ft (60% down) | | Performance symmetric lens (Up) | | | |
| Voltage | Driver | Circuit | Wiring Option | | System/Controls |
| D UNV 120-277V | E Advance Xitanium 0-10V (1% Dim) | 1 Single circuit | N None | | NN None |
| 3 347V | | | B Battery pack | | |
| | | | E Auxiliary wiring | | |
| Finish | Mount Type | | | Suspension | |
| W Standard white | A1 | Non-accessible ceiling, 0°-15° slope mount | A6-1 T-Grid on-grid mount 15/16" (non tegular tile only) | 24 24" | |
| T Titanium silver | A2 | T-Grid fixed position mount | | 48 48" | |
| B Black | A3 | Non-accessible ceiling, 0°-90° slope mount | A6-2 T-Grid on-grid mount 9/16" (non tegular tile only) | 96 96" | |
| G Graphite grey | A5 | T-Grid 24" span mount (non tegular tile only) | A6-3 T-Grid on-grid mount 9/16" x 5/16" (slot tee & tegular tile) | 144 144" | |

*Please refer to exclusions.

DLC Note: Not all product variations are DLC qualified. To ensure that a specific model is qualified, visit www.designlights.org/search

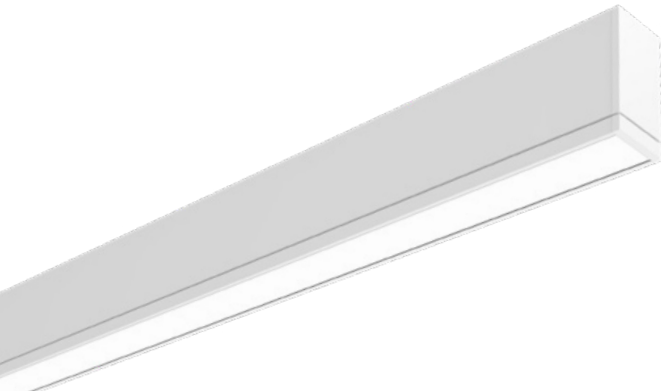


interact
ready.



TruGroove Surface

Exceptional uniformity and wide row spacing from a 3" aperture continuous line of light



Why choose TruGroove Surface?

- MesoOptics DX and innovative optics producing optimal batwing distribution
- An extended family and refined design are perfect for lighting any professional space
- Wide row spacing with fewer fixtures and less energy consumption
- Ideal for a variety of applications with multiple distributions and modules

Ordering guide

| Family | Version | Distribution | Source | CRI/CCT |
|---|---|--------------------|--|---|
| 29 TruGroove | 1 Surface | 1 Direct | L LED | 950 CRI 90, 5000K 940 CRI 90, 4000K 935 CRI 90, 3500K 930 CRI 90, 3000K 927 CRI 90, 2700K |
| Lumens | Optics | | Run Length | |
| 40 4000lm/4ft 30 3000lm/4ft 22 2200lm/4ft 15 1500lm/4ft | LN Definition symmetric flush silk lens (Dn) QN Performance symmetric flush MesoOptics lens (Dn) WN Performance asymmetric wall wash flush MesoOptics lens (Dn) | | 02 2ft 04 4ft 06 6ft 08 8ft XX Continuous run in 2 ft increments (please specify length) | |
| Voltage | Driver | Circuit | Wiring Option | System/Controls |
| D UNV 120-277V 3 347V | E Advance Xitanium 0-10V (1% Dim) | 1 Single circuit | N None B Battery pack E Auxiliary wiring | NN None |
| Finish | | Mount Type | | |
| W Standard white T Titanium silver B Black G Graphite grey | | SF Surface mounted | | |

*Please refer to exclusions.

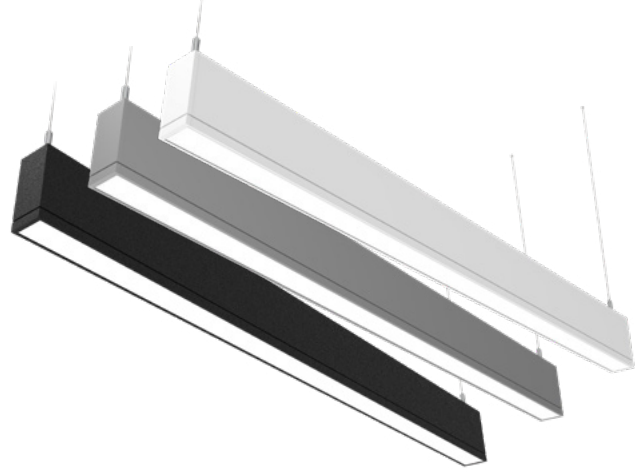


interact
ready.



TruGroove Suspended micro

Seamless 1.75" ribbon of light with **exceptional performance and versatility** for functional and decorative applications



Why choose TruGroove Suspended micro?

- Unique Quad Optic louver cells offer a wide range of options from graze to stack to asymmetric wall wash
- Wide row spacing with fewer fixtures and less energy consumption
- 20+ Lighting distributions which are ideal for a variety of applications



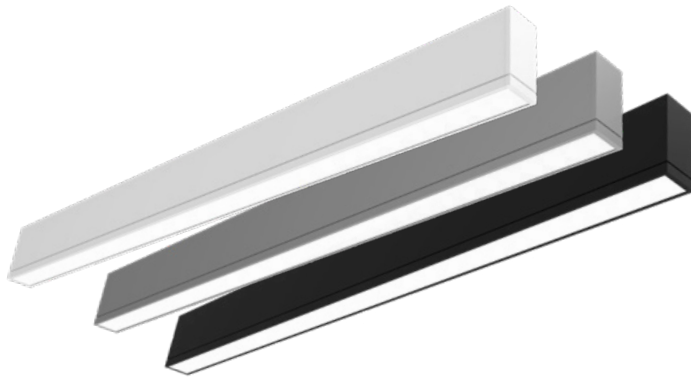
Ordering guide

| Family | Version | Distribution | Source | CRI/CCT | |
|---|--|--|--------------------------|--------------------|-------------------|
| TM TruGroove micro | 0 Suspended | 1 Direct 3 Indirect 5 Indirect/Indirect 6 Direct/Indirect | L LED | 950 | CRI 90, 5000K |
| | | | | 940 | CRI 90, 4000K |
| | | | | 935 | CRI 90, 3500K |
| | | | | 930 | CRI 90, 3000K |
| | | | | 927 | CRI 90, 2700K |
| Optics (Direct) | | Lumens (Direct) | Optics (Indirect) | | Lumens (Indirect) |
| Lens | Louver Cell | | | | |
| N No lens (specify direct louver and/or indirect optic) | NNNN None | NN None | N None | NN | None |
| Q Performance symmetric batwing flush MesoOptics | | 40 4000lm/4ft | Q Performance symmetric | 70 | 7000 lm/4ft |
| W Performance asymmetric/wall wash flush MesoOptics | | 35 3500lm/4ft | W Performance asymmetric | 60 | 6000 lm/4ft |
| L Definition symmetric flush silk | | 30 3000lm/4ft | | 50 | 5000 lm/4ft |
| | | 25 2500lm/4ft | | 40 | 4000 lm/4ft |
| | | 20 2000lm/4ft | | 30 | 3000 lm/4ft |
| | | 15 1500lm/4ft | | 20 | 2000 lm/4ft |
| | | 10 1000lm/4ft | | 10 | 1000 lm/4ft |
| Run Length | Voltage | Driver | Circuit | Wiring Option | Systems/Controls |
| 02 2ft 05 5ft | D UNV 120-277V | E Advance Xitanium | 1 Single circuit | N None | NN None |
| 03 3ft 06 6ft | 3 347V | 0-10V (1% Dim) | | B Battery pack | |
| 04 4ft 08 8ft | | | | E Auxiliary wiring | |
| XX Continuous run in 1ft increments (please specify length) | | | | | |
| Finish | Mount Type | | Suspension | | |
| W Standard white | A1 Non-accessible ceiling, 0°-15° slope mount | A6-1 T-Grid on-grid mount 15/16" (non tegular tile only) | 24 | 24" | |
| T Titanium silver | A2 T-Grid, fixed position mount | A6-2 T-Grid on-grid mount 9/16" (non tegular tile only) | 48 | 48" | |
| B Black | A3 Non-accessible ceiling, 0°-90° slope mount | A6-3 T-Grid on-grid mount 9/16" x 5/16" (slot tee & tegular tile) | 96 | 96" | |
| G Graphite grey | A5 T-Grid 24" span mount (non tegular tile only) | | 144 | 144" | |

*Please refer to exclusions.

DLC Note: Not all product variations are DLC qualified. To ensure that a specific model is qualified, visit www.designlights.org/search





TruGroove Surface micro

Innovative optics deliver **exceptional uniformity and wide row spacing** from a 1.75" aperture continuous line of light



Why choose TruGroove Surface micro?

- MesoOptics DX and innovative optics producing optimal batwing distribution
- Innovative quad optic louver cell provides visual comfort with excellent performance
- Smaller and more versatile
- Ideal for a variety of applications with multiple distributions and modules

Ordering guide

| Family | Version | Distribution | Source | CRI/CCT |
|---|---|--|-------------------------|--|
| TM TruGroove micro | 1 Surface | 1 Direct | L LED | 950 CRI 90, 5000K 940 CRI 90, 4000K 935 CRI 90, 3500K 930 CRI 90, 3000K 927 CRI 90, 2700K |
| Optics (Direct) | | Lumens (Direct) | Optics (Indirect) | Lumens (Indirect) |
| Lens | Louver Cell | | | |
| N No lens (specify direct louver) Q Performance symmetric batwing flush MesoOptics W Performance asymmetric/wall wash flush MesoOptics L Definition symmetric flush silk | NNNN None | NN None 40 4000lm/4ft 35 3500lm/4ft 30 3000lm/4ft 25 2500lm/4ft 20 2000lm/4ft 15 1500lm/4ft 10 1000lm/4ft | N None | NN None |
| Run Length | Voltage | Driver | Circuit | Wiring Option |
| 02 2ft 05 5ft 03 3ft 06 6ft 04 4ft 08 8ft XX Continuous run in 1ft increments (please specify length) | D UNV 120-277V 3 347V | E Advance Xitanium 0-10V (1% Dim) | 1 Single circuit | N None B Battery pack E Auxiliary wiring |
| Systems/Controls | Finish | Mount Type | | |
| NN None | W Standard white T Titanium silver B Black G Graphite grey | SF Surface mounted | | |

*Please refer to exclusions.



interact
ready.



ModiFly Suspended

The new **action hero** for lighting design. Simple, yet sophisticated, ModiFly has a style that lends itself perfectly to a variety of spaces.



Why choose ModiFly Suspended?

- Vertical Light Guide technology produces a controlled batwing distribution with 72% downlight and up to 16ft o.c. spacing
- Multiple lumen package from 1500lm/4ft to 4500lm/4ft in 500lm steps
- Choose from 6 standard paint finishes, including Hero Gold, Silver Nova & Venom Black
- Fully articulating Bi-Link, Tri-Link & Quad-Link joints give you unlimited design options



Ordering guide

| Family | Version | Type | Source | CRI/CCT |
|--|--|--|---|--|
| MF ModiFly | O Standard | S Suspended | L LED | 950 CRI 90, 5000K 940 CRI 90, 4000K 935 CRI 90, 3500K 930 CRI 90, 3000K 927 CRI 90, 2700K |
| Lumens | Optics | Distribution | Run Length | |
| 45 4500lm/4ft 40 4000lm/4ft 35 3500lm/4ft 30 3000lm/4ft 25 2500lm/4ft 20 2000lm/4ft 15 1500lm/4ft | Q Vertical light guide | N 75% down/25% up | 02 2ft 04 4ft 05 5ft 06 6ft 08 8ft XX Continuous run >4ft in 1ft increments (please specify length) | |
| Voltage | Driver | Circuit | Wiring Option | System/Controls |
| D UNV 120-277V 3 347V | E Advance Xitanium 0-10V (1% Dim) | 1 Single circuit | N None B Battery pack E Auxiliary wiring | NN None |
| Finish | Mount Type | Suspension | | |
| W Standard white H Hero gold S Silver nova V Venom black T Titanium silver B Black | M1 Non-accessible ceiling, 0°-15° slope mount M2 T-grid fixed position mount M3 Non-accessible ceiling, 0°-90° slope mount M6-1 T-grid on-grid mount 15/16" (non tegular tile only) M6-2 T-grid on-grid mount 9/16" (non tegular tile only) M6-3 T-grid on-grid mount 9/16" x 5/16" (slot tee & tegular tile) | 24 24" 48 48" 96 96" 144 144" | | |

*Please refer to exclusions.



BoldPlay Suspended

Unrivalled performance and **effortless style** make BoldPlay a benchmark for LED luminaires



Why choose BoldPlay Suspended?

- MesoOptics and Light Guide technology
- Palette of color temperatures
- Optimal batwing distribution enabling wide row spacing
- Striking aesthetics characterized by effortless style and urban edginess

Ordering guide

| Family | Version | Type | Source | CRI/CCT |
|--|--|---|---|---|
| 78 BoldPlay | 0 Suspended | 6 Direct/Indirect | L LED | A CRI 80, 4000K B CRI 80, 3500K C CRI 80, 3000K |
| Lumens | Optics | Distribution | Run Length | |
| A 6500lm/4ft C 4600lm/4ft E 3400lm/4ft | Q MesoOptics lens | N Lightguide (75% up) D 55% down kit G 80% down kit J 100% down kit | 04 4ft 08 8ft XX Continuous run in 4ft increments (please specify length) | |
| Circuit/Wiring Option | Voltage | Driver | Finish | Options |
| 7 Single circuit N Single circuit + Battery pack M Single circuit + Auxiliary wiring | D UNV 120-277V 3 347V | E Advance Xitanium 0-10V (1% Dim) | W Standard white T Titanium silver B Black | N None |
| System/Controls | Mount Type | | | Suspension |
| N None | A1 Non-accessible ceiling, 0°-15° slope mount A2 T-grid fixed position mount A3 Non-accessible ceiling, 0°-90° slope mount A5 T-grid 24" span mount (non regular tile only) | A6-1 T-grid on-grid mount 5/16" (non regular tile only) A6-2 T-grid on-grid mount 9/16" (non regular tile only) A6-3 T-grid on-grid mount 9/16" x 5/16" (slot tee & regular tile) | 24 24" 48 48" 96 96" 144 144" | |

*Please refer to exclusions.



interact
ready.



mesoOptics

Sync Suspended

Sophisticated performance in a **clean and simple design** aesthetic for mainstream applications



Why choose Sync Suspended?

- Low-profile design
- MesoOptics and Light Guide panel producing optimal batwing distribution
- Allows aesthetic continuity in a space when paired with Sync Wall
- Wide row spacing with fewer fixtures and less energy consumption



Ordering guide

| Family | Version | Type | Source | CRI/CCT |
|--|---|--|---|---|
| 74 Sync | O Suspended | 6 Direct/Indirect | L LED | A CRI 80, 4000K B CRI 80, 3500K C CRI 80, 3000K |
| Lumens | Optics | Distribution | Run Length | |
| A 6500lm/4ft C 4600lm/4ft E 3400lm/4ft | Q MesoOptics lens | N Lightguide (75% up) D 55% down kit G 80% down kit J 100% down kit | O4 4ft O8 8ft XX Continuous run in 4ft increments (please specify length) | |
| Circuit/Wiring Option | Voltage | Driver | Finish | |
| 7 Single circuit N Single circuit + Battery pack M Single circuit + Auxiliary wiring | D UNV 120-277V 3 347V | E Advance Xitanium 0-10V (1% Dim) | W Standard white T Titanium silver B Black | |
| Mount Type | | | Suspension | |
| A1 Non-accessible ceiling, 0°-15° slope mount | A6-1 T-grid on-grid mount 5/16" | (non tegular tile only) | 24 | 24" |
| A2 T-grid fixed position mount | A6-2 T-grid on-grid mount 9/16" | | 48 | 48" |
| A3 Non-accessible ceiling, 0°-90° slope mount | A6-3 T-grid on-grid mount 9/16" x 5/16" | | 96 | 96" |
| A5 T-grid 24" span mount (non tegular tile only) | | | 144 | 144" |

*Please refer to exclusions.



Verge Suspended

Uncompromising performance in an ultra slim, contemporary design



Why choose Verge Suspended?

- Suspended and complementary wall mount versions
- Exceptional direct/indirect lighting performance in a sleek, geometric design
- Complete visual comfort with the perfect balance of brightness and glare control from all viewing angles
- Engineered to allow for wider spacings

Ordering guide

| Family | Version | Type | Source | CRI/CCT |
|--|---|--|--|---|
| 76 Verge | 0 Suspended | 6 Direct/Indirect | L LED | A CRI 80, 4000K B CRI 80, 3500K C CRI 80, 3000K |
| Lumens | Optics | Distribution | Run Length | |
| A 6500lm/4ft C 4600lm/4ft E 3400lm/4ft | Q MesoOptics lens | N Lightguide (75% up) D 55% down kit G 80% down kit J 100% down kit | O4 4ft O8 8ft XX Continuous runs in 4ft increments (please specify length) | |
| Circuit/Wiring Option | Voltage | Driver | Finish | |
| 7 Single circuit N Single circuit + Battery pack M Single circuit + Auxiliary wiring | D UNV 120-277V 3 347V | E Advance Xitanium 0-10V (1% Dim) | W Standard white T Titanium silver B Black | |
| Mount Type | | | | Suspension |
| A1 Non-accessible ceiling, 0°-15° slope mount | A6-1 T-grid on-grid mount 15/16" (non tegular tile only) | | 24 | 24" |
| A2 T-grid fixed position mount | A6-2 T-grid on-grid mount 9/16" (non tegular tile only) | | 48 | 48" |
| A3 Non-accessible ceiling, 0°-90° slope mount | A6-3 T-grid on-grid mount 9/16" x 5/16" (slot tee & tegular tile) | | 96 | 96" |
| A5 T-grid 24" span mount (non tegular tile only) | | | 144 | 144" |

*Please refer to exclusions.



Chopstick Suspended

Clean, minimalist design with **big performance** and **optimal energy-efficiency** for mainstream architectural applications



Why choose Chopstick Suspended?

- Small size with big lighting performance and a price point that makes it ideal for use in many different types of spaces
- Up to 108lm/W efficacy
- Wide lateral distribution in the upper hemisphere enabling wider row spacing
- MesoOptics and Light Guide panel producing optimal batwing distribution



Ordering guide

| Family | Version | Type | Source | CRI/CCT |
|--|--|-----------------------------------|--|---|
| 75 Chopstick | 0 Suspended | 5 Indirect/Direct | L LED | A CRI 80, 4000K B CRI 80, 3500K C CRI 80, 3000K |
| Lumens | Optics | Distribution | Run Length | |
| A 6500lm/4ft C 4800lm/4ft E 3400lm/4ft | Q MesoOptics lens | N Lightguide (88% up) | 04 4ft 06 6ft 08 8ft XX Continuous run >4ft in 2ft increments (please specify length) | |
| Circuit/Wiring Option | Voltage | Driver | Finish | |
| 7 Single circuit N Single circuit + Battery pack M Single circuit + Auxiliary wiring | D UNV 120-277V 3 347V | E Advance Xitanium 0-10V (1% Dim) | W Standard white T Titanium silver B Black | |
| Mount Type | | | Suspension | |
| A1 Non-accessible ceiling, 0°-15° slope mount A2 T-grid fixed position mount A3 Non-accessible ceiling, 0°-90° slope mount A5 T-grid 24" span mount (non tegular tile only) | A6-1 T-grid on-grid mount 15/16" (non tegular tile only) A6-2 T-grid on-grid mount 9/16" (non tegular tile only) A6-3 T-grid on-grid mount 9/16" x 5/16" (slot tee & tegular tile) | | 24 24" 48 48" 96 96" 144 144" | |

*Please refer to exclusions.



Jump Suspended

Aesthetic design elements and **playful patterns** with multiple distributions in seamless continuum of luminance.



Why choose Jump Suspended?

- Highly flexible choice for functional environments
- Contemporary aesthetic combines the latest lighting technologies with texture, pattern, and rhythm
- Maximum control, performance and energy savings
- Three sophisticated aesthetic styles: SplashPerf, PixelPerf and SolidSide

Ordering guide

| Family | Version | Distribution | Source | CRI/CCT |
|--|---|--|---|---|
| 12 Jump | 0 Suspended | 1 Direct | L LED | A CRI 80, 4000K B CRI 80, 3500K C CRI 80, 3000K |
| Lumens | Optics | Housing | Run Length | |
| C 4900lm/4ft E 3600lm/4ft G 2400lm/4ft | Q Ribbed MesoOptics lens | E SolidSide P PixelPerf S SplashPerf | 04 4ft 08 8ft XX Continuous run in 4ft increments (please specify length) | |
| Circuit/Wiring Option | Voltage | Driver | Finish | |
| 7 Single circuit N Single circuit + Battery pack M Single circuit + Auxiliary wiring | D UNV 120-277V 3 347V | E Advance Xitanium 0-10V (1% Dim) | W Standard white T Titanium silver B Black | |
| Mount Type | | | | Suspension |
| A1 Non-accessible ceiling, 0°-15° slope mount | A6-1 T-grid on-grid mount 15/16" (non tegular tile only) | 24 24" | | |
| A2 T-grid fixed position mount | A6-2 T-grid on-grid mount 9/16" (non tegular tile only) | 48 48" | | |
| A3 Non-accessible ceiling, 0°-90° slope mount | A6-3 T-grid on-grid mount 9/16" x 5/16" (slot tee & tegular tile) | 96 96" | | |
| A5 T-grid 24" span mount (non tegular tile only) | | 144 144" | | |

*Please refer to exclusions.



Sona Suspended

Incredible efficacy & boundless lighting choices ensure Sona LED linear is destined to become a **future classic**



Why choose Sona Suspended?

- Flexible optical design for a myriad of tasks within each space
- Budget friendly
- Flexible up/down distributions and tailored LED optics – the right light for every task



Ordering guide

| Family | Version | Type | Source | CRI/CCT |
|-----------------|--|-------------------|--|-------------------------------------|
| 77 Sona | 0 One light engine - upper | 3 Indirect | L LED | A CRI 80, 4000K |
| | | 5 Indirect/Direct | | B CRI 80, 3500K |
| | 1 One light engine - lower | 1 Direct | | C CRI 80, 3000K |
| Lumens | Optics & Distribution | | Run Length | Circuit/Wiring Option |
| C 4900lm/4ft | NA Solid housing/Acrylic diffuser (100% up) | | 04 4ft | 7 Single circuit |
| E 3400lm/4ft | | | 08 8ft | N Single circuit + Battery pack |
| B 6100lm/4ft | AA Acrylic diffuser (70% up) | | XX Continuous run in 4ft increments (please specify length) | M Single circuit + Auxiliary wiring |
| C 4500lm/4ft | VD White louvers + 50 % down kit | | | |
| E 3100lm/4ft | | | | |
| C 4500lm/4ft | AN Acrylic diffuser/Solid housing (100% down) | | | |
| E 3200lm/4ft | VG White louvers/Acrylic diffuser (75-80% down) | | | |
| G 2100lm/4ft | | | | |
| Voltage | Driver | | Finish | Option |
| D UNV 120-277V | E Advance Xitanium 0-10V (1% Dim) | | W Standard white | N None |
| 3 347V | | | T Titanium silver | |
| | | | B Black | |
| System/Controls | Mount Type | | | Suspension |
| NN None | A1 Non-accessible ceiling, 0°-15° slope mount | A6-1 | T-grid on-grid mount 15/16" (non tegular tile only) | 24 24" |
| | A2 T-grid fixed position mount | | | 48 48" |
| | A3 Non-accessible ceiling, 0°-90° slope mount | A6-2 | T-grid on-grid mount 9/16" (non tegular tile only) | 96 96" |
| | A5 T-grid 24" span mount (non tegular tile only) | A6-3 | T-grid on-grid mount 9/16" x 5/16" (slot tee & tegular tile) | 144 144" |

*Please refer to exclusions.



interact
ready.





FloatPlane Suspended

Coast-to-coast style that your budget will love



Why choose FloatPlane Suspended?

- Sleek and low profile design of only 1.2" h x 8" w
- Compelling performance of up to 129 LPW
- Fresh and playful, with Curve and Edge profile options
- Multiple lumen package and color temperature options
- Affordable performance for your budget

Ordering guide

| Family | Version | Type | Source | CRI/CCT |
|--|---|--|--|--|
| 24 FloatPlane | G Edge suspended R Curve suspended | 5 Indirect/Direct | L LED | A 80CRI, 4000K B 80CRI, 3500K C 80CRI, 3000K |
| Lumens | Optics | Distribution | Run Length | Circuit/Wiring Option |
| A 7500lm/4ft B 6000lm/4ft C 4500lm/4ft E 3200lm/4ft | A Acrylic diffuser | A Acrylic diffuser (70% up) D 45% down kit G 75% down kit H 90% down kit J 100% down kit | 04 4ft 06 6ft 08 8ft XX Continuous run >4ft in 2ft increments (please specify length) | 7 Single circuit N Single circuit + Battery pack M Single circuit + Auxiliary wiring |
| Voltage | Driver | Finish | Options | System/Controls |
| D UNV 120-277V 3 347V | E Advance Xitanium 0-10V (1% Dim) | W Standard white T Titanium silver B Black | N None | N None |
| Mount Type | | | | Suspension |
| A1 Non-accessible ceiling, 0°-15° slope mount | A6-1 T-grid on-grid mount 15/16" (non tegular tile only) | | | 24 24" |
| A2 T-grid fixed position mount | A6-2 T-grid on-grid mount 9/16" (non tegular tile only) | | | 48 48" |
| A3 Non-accessible ceiling, 0°-90° slope mount | A6-3 T-grid on-grid mount 9/16" x 5/16" (slot tee & tegular tile) | | | 96 96" |
| A5 T-grid 24" span mount (non tegular tile only) | | | | 144 144" |

*Please refer to exclusions.



interact
ready.



SyncLine Suspended

Aimed at **budget driven** interiors, SyncLine provides a clean, modern aesthetic with the **performance** you expect from Ledalite.



Why choose SyncLine Suspended?

- Small housing (6.75" wide x 1.5" high)
- Budget friendly
- Efficacy up to 150 lm/W
- AccuRender CRI 90+ across the CCT range
- 10+ optical configurations with wide indirect distributions



Ordering guide

| Family | | | Version | Distribution | Source | CRI/CCT |
|-----------------------------------|----------------------|--|---|--------------------|-----------------|--------------------------|
| SL SyncLine | | | 0 Suspended - one light engine | 1 Direct | L LED | 950 CRI 90, 5000K |
| | | | | 3 Indirect | | 940 CRI 90, 4000K |
| | | | | 6 Direct/Indirect | | 935 CRI 90, 3500K |
| | | | 1 Suspended - two light engines | 6 Direct/Indirect | | 930 CRI 90, 3000K |
| | | | | | | 927 CRI 90, 2700K |
| Lumens | | | Optics | | Run Length | Voltage |
| One light engine | Total fixture lumens | NN D/I lumens determined by optics | AJ Acrylic Diffuser (100% Down, Max 4000 lm/4ft) | | 04 4ft | D UNV 120-277V 3 347V |
| | 80 8000 lm/4ft | | NA Dust Cover (100% Up, Max 7000 lm/4ft) | | 06 6ft | |
| | 70 7000 lm/4ft | | NB Open - No Dust Cover (100% Up, Max 7000 lm/4ft) | | 08 8ft | |
| | 60 6000 lm/4ft | | XX Continuous run in 2ft increments > 4ft (please specify) | | | |
| | 50 5000 lm/4ft | | | | | |
| | 40 4000 lm/4ft | | | | | |
| | 30 3000 lm/4ft | | | | | |
| | 20 2000 lm/4ft | | | | | |
| | | | | | | |
| Driver | | | Circuit | Wiring Option | System/Controls | Finish |
| X Advance 0-10V (10% Dim) | | | 1 Single circuit | N None | NN None | W Standard white |
| E Advance Xitanium 0-10V (1% Dim) | | | | B Battery pack | | B Black |
| | | | | N Auxiliary wiring | | |
| Options | | Mount Type | | | | Suspension |
| N None | | A1 Non-accessible ceiling, 0°-15° slope mount | A6-1 T-grid on-grid mount 15/16" (non tegular tile only) | | | 24 24" |
| V Variable mount housing | | A2 T-grid fixed position mount | A6-2 T-grid on-grid mount 9/16" (non tegular tile only) | | | 48 48" |
| | | A3 Non-accessible ceiling, 0°-90° slope mount | A6-3 T-grid on-grid mount 9/16" x 5/16" (slot tee & tegular tile) | | | 96 96" |
| | | A5 T-grid 24" span mount (non tegular tile only) | | | | 144 144" |

*Please refer to exclusions.



Recessed, Cove, & Perimeter





TruGroove Recessed

Seamless 3" ribbon of light with **exceptional performance and versatility** for functional and decorative applications



Why choose TruGroove Recessed?

- Elevated performance to a whole new level in narrow aperture recessed lighting
- Wide row spacing with fewer fixtures and less energy consumption
- Designed to integrate seamlessly with any drywall or T-grid ceiling condition
- Continuous lines of uninterrupted luminance



Ordering guide

| Family | Version | Distribution | Source | CRI/CCT |
|------------------|-----------------------------------|------------------------------------|------------------------------|---|
| 39 TruGroove | O Recessed | 1 Performance symmetric | L LED | 950 CRI 90, 4000K |
| | | 8 Performance asymmetric wall wash | | 940 CRI 90, 4000K |
| | | 0 Definition symmetric | | 935 CRI 90, 3500K |
| | | | | 930 CRI 90, 3000K |
| | | | | 927 CRI 90, 2700K |
| Lumens | Optics | Housing | Ceiling/Trim | Run Length |
| 40 4000lm/4ft | Q Flush MesoOptics lens | S Standard | 1 T-grid | 02 2ft |
| 30 3000lm/4ft | R Regressed MesoOptics lens | C Chicago Plenum | 3 Drywall trimless (ceiling) | 04 4ft |
| 22 2200lm/4ft | Q Flush MesoOptics lens | | 4 Drywall trim | 06 6ft |
| 15 1500lm/4ft | | | | 08 8ft |
| | | | | XX Continuous runs 2-20ft in 2ft increments (please specify length) |
| | L Flush silk lens | | | |
| | M Regressed silk lens | | | |
| Voltage | Driver | Circuit | Wiring Option | System/Controls |
| D UNV 120-277V | E Advance Xitanium 0-10V (1% Dim) | 1 Single circuit | N None | NN None |
| 3 347V | | | B Battery pack | |
| | | | E Auxiliary wiring | |
| Trim Finish | | | | |
| W Standard white | | | | |
| B Black | | | | |

*Please refer to exclusions.



1.75"
aperture

TruGroove Recessed micro

Seamless 1.75" ribbon of light delivers the perfect combination of slender aesthetic and lighting control

Why choose TruGroove Recessed micro?

- Ideal for a variety of applications
- Elevated performance to a whole new level in narrow aperture lighting
- Wide row spacing with fewer fixtures and lower energy consumption
- Continuous lines of uninterrupted luminance to 1/8"
- Exceptional uniformity and wide row spacing from a 1.75" aperture continuous line-of light

Ordering guide

| Family | Version | Distribution | Source | CRI/CCT |
|--|--|---|--|--|
| 23 TruGroove micro | 0 Recessed | 1 Direct | L LED | 950 CRI 90, 4000K 940 CRI 90, 4000K 935 CRI 90, 3500K 930 CRI 90, 3000K 927 CRI 90, 2700K |
| Optics | | Lumens (Direct) | Housing | Ceiling/Trim |
| Lens | Louver Cell | | | |
| Q Performance Symmetric Batwing Flush MesoOptics W Performance Asymmetric/ Wall Wash Flush MesoOptics L Definition Symmetric Flush Silk | NNNN | NN None 40 4000 lm/4ft 35 3500 lm/4ft 30 3000 lm/4ft 25 2500 lm/4ft 20 2000 lm/4ft 15 1500 lm/4ft 10 1000 lm/4ft | S Standard C Chicago Plenum | 1 T-grid 3 Drywall trimless (ceiling) 4 Drywall trim |
| Run Length | Voltage | Driver | Circuit | Wiring Option |
| 02 2ft 04 4ft 06 6ft 08 8ft XX Continuous run 2-20ft in 2ft increments (please specify length) | D UNV 120-277V 3 347V | E Advance Xitanium 0-10V (1% Dim) | 1 Single circuit | N None B Battery pack E Auxiliary wiring |
| System/Controls | | Trim Finish | | |
| NN None | | W Standard white B Black | | |

*Please refer to exclusions.



interact
ready.



TruGroove Cove

TruGroove cove offers a **highly-controlled asymmetric light throw**, evenly lighting the space and ceiling



Why choose TruGroove Cove?

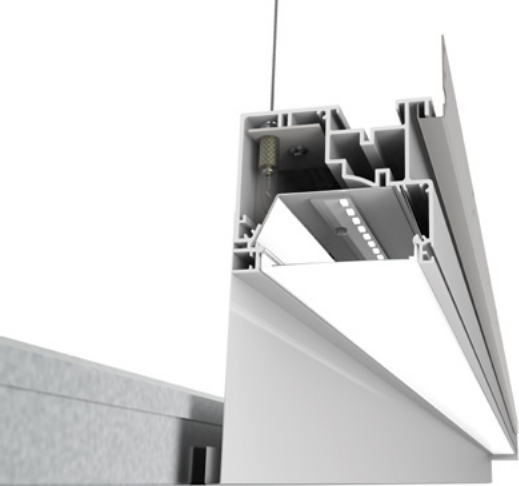
- Highly-controlled asymmetric light throw
- Single spec housing that can adjust the peak candela angle based on mounting orientation
- High performance in a smaller than 5"x2" cross-section
- Free of striations and any "socket shadow" effects
- Focus and fill optics



Ordering guide

| Family | Version | Distribution | Source | CRI/CCT |
|--|--|--|---|---|
| TC TruGroove | 0 Cove | 8 Asymmetric | L LED | 950 CRI 90, 4000K 940 CRI 90, 4000K 935 CRI 90, 3500K 930 CRI 90, 3000K 927 CRI 90, 2700K |
| Lumens | Optics | Housing | Ceiling/Trim | Run Length |
| 60 6000lm/4ft 50 5000lm/4ft 40 4000lm/4ft 30 3000lm/4ft 25 2500lm/4ft 20 2000lm/4ft 15 1500lm/4ft 10 1000lm/4ft | WN Focus optics (micro silver) LN Fill optics (white reflector) | S Standard C Chicago Plenum | N None | 02 2ft C2 2.5ft 03 3ft C3 3.5ft 04 4ft 05 5ft 06 6ft 08 8ft XX Continuous runs in 6in increments (please specify length) |
| Voltage | Driver | Circuit | Wiring Option | System/Controls |
| D UNV 120-277V 3 347V | E Advance Xitanium 0-10V (1% Dim) | 1 Single circuit | N None B Battery pack E Auxiliary wiring | NN None |
| Finish | | | | |
| N Satin Coat | | | | |

*Please refer to exclusions.



TruGroove Perimeter

Seamless ribbon of light with **exceptional performance and versatility** for functional and decorative applications



Why choose TruGroove Perimeter?

- Architectural recessed lighting for making a statement, or setting a mood
- Ambient provides ambient lighting that creates soft light for wayfinding
- Graze allows for making maximum impact along wall sculptures or architectural features

Ordering guide

| Family | Version | | Distribution | Source | CRI/CCT |
|------------------|---|-----------------|------------------|---|--|
| 49 TruGroove | O Perimeter | | 8 Ambient | L LED | 950 CRI 90, 5000K |
| | | | 9 Graze | | 940 CRI 90, 4000K |
| | | | | | 935 CRI 90, 3500K |
| | | | | | 930 CRI 90, 3000K |
| | | | | | 927 CRI 90, 2700K |
| Lumens | Optics | | Housing | Surface | Run Length |
| 40 4000lm/4ft | Q Flush MesoOptics lens | | S Standard | N All ceiling trims: endset, slot & trim* (please specify separately) | 02 2ft |
| 30 3000lm/4ft | | | C Chicago Plenum | | 04 4ft |
| 22 2200lm/4ft | | | | | 06 6ft |
| 15 1500lm/4ft | | | | | 08 8ft |
| | P Reverse parabolic optic w/ flush lens | | | | XX Continuous run 2-20ft in 2ft increments (please specify length) |
| Voltage | Driver | | Circuit | Wiring Option | System/Controls |
| D UNV 120-277V | E Advance Xitanium 0-10V (1% Dim) | | 1 Single circuit | N None | NN None |
| 3 347V | | | | B Battery pack | |
| | | | | E Auxiliary wiring | |
| Finish | Endset (left) | Endset (right) | Slot height | Slot panel | Ceiling/Trim |
| W Standard white | C Variable/Wall | C Variable/Wall | 2 1.75" | S Standard solid | 1 T-grid |
| | S Fixed/Pocket | S Fixed/Pocket | 4 4" | | 3 Drywall trimless |
| | | | | | 4 Drywall trim |
| B Black | | | 4 4" | A Air return | 1 T-grid |

*Please refer to exclusions.







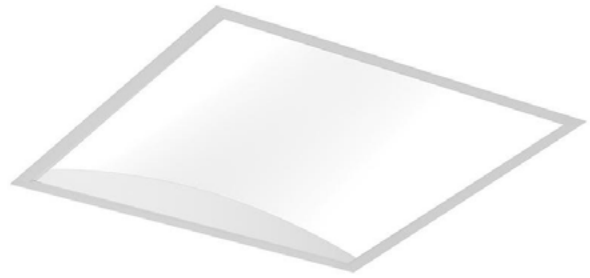
Recessed





ArcForm

Inspired by the **classic curve** and **innovative design** delivers exceptional performance and energy saving



Why choose ArcForm?

- Graceful aesthetic
- State-of-the-art LED optical design
- Three-dimensional batwing lighting distribution
- Patented MesoOptics nanotechnology
- Multiple lumen packages and color temperatures



Ordering guide

| Family | Size | Version | Configuration | Source |
|--------------------------|--|--|--|--------------|
| 36 ArcForm | 14 1' x 4' | D1 Standard T-grid | ST Standalone | L LED |
| | 22 2' x 2' | D2 Slot T-grid | | |
| | | C1 Standard T-grid + Chicago Plenum | | |
| | | C2 Slot T-grid + Chicago Plenum | | |
| CRI/CCT | Lumens | Optics | Circuit/Wiring Option | |
| 950 CRI 90, 5000K | 45 4500lm | Q MesoOptics with 3D batwing | 1 Single circuit | |
| 940 CRI 90, 4000K | 35 3500lm | | B Single circuit + Battery pack | |
| 935 CRI 90, 3500K | 30 3000lm | | | |
| 920 CRI 90, 2000K | | | | |
| 927 CRI 90, 2700K | | | | |
| Voltage | Driver | Option | System/Controls | |
| D UNV 120-277V | E Advance Xitanium 0-10V (1% Dim) | N None | NN None | |
| 3 347V | | | | |

*Please refer to exclusions.





VersaForm

Clean harmonious style and **superior performance** in a seamless upgradable design



Why choose VersaForm?

- Wide palette of sizes, lumen packages, color temperatures, color renderings, housings
- Fixtures can be fastened directly to the T-bar grid and/or tied-off to the building structure

Ordering guide

| Family | Size | Version | Configuration | Source |
|------------------|-----------------------------------|--------------------|---------------------------------|--------|
| 41 VersaForm | 22 2' x 2' | D1 Standard T-grid | ST Standalone | L LED |
| | 24 2' x 4' | D2 Slot T-grid | | |
| CRI/CCT | Lumens | Housing | Circuit/Wiring Option | |
| 8A CRI 90, 4000K | D 4000lm | S Standard | 1 Single circuit | |
| 8B CRI 90, 3500K | E 3000lm | C Chicago Plenum | B Single circuit + Battery pack | |
| 8C CRI 90, 3000K | A 6800lm | | | |
| | C 5200lm | | | |
| | D 4000lm | | | |
| Voltage | Driver | Option | System/Controls | |
| D UNV 120-277V | E Advance Xitanium 0-10V (1% Dim) | N None | NN None | |
| 3 347V | | | | |

*Please refer to exclusions.



SilkSpace definition

Minimalist, modern good looks
that's perfect for your tight
budget projects



Why choose SilkSpace definition?

- Graceful aesthetic
- State-of-the-art LED optical design
- High efficiency with a fully luminous optic, minimizing harsh shadows
- Multiple lumen packages and color temperatures



Ordering guide

| Family | Size | Version | Configuration | Source |
|--------------------------|-----------------------------------|-------------------------------------|---|--------|
| 42 SilkSpace definition | 14 1' x 4' | D1 Standard T-grid | ST Standalone | L LED |
| | 22 2' x 2' | C1 Standard T-grid + Chicago Plenum | | |
| | 24 2' x 4' | | | |
| CRI/CCT | Lumens | Optics | Circuit/Wiring Option | |
| 950 CRI 90, 5000K | 50 5000lm | A Acrylic Silk Lens | 1 Single circuit B Single circuit + Battery pack | |
| 940 CRI 90, 4000K | 45 4500lm | | | |
| 935 CRI 90, 3500K | 40 4000lm | | | |
| 930 CRI 90, 3000K | 35 3500lm | | | |
| 927 CRI 90, 2700K | 30 3000lm | | | |
| | 25 2500lm | | | |
| | 80 8000lm | | | |
| | 75 7500lm | | | |
| | 70 7000lm | | | |
| | 65 6500lm | | | |
| | 60 6000lm | | | |
| | 55 5500lm | | | |
| | 50 5000lm | | | |
| | 45 4500lm | | | |
| 40 4000lm | | | | |
| Voltage | Driver | Option | System/Controls | |
| D UNV 120-277V 3 347V | E Advance Xitanium 0-10V (1% Dim) | N None | NN None | |

*Please refer to exclusions.



SilkSpace

SilkSpace delivers discrete, comfortable lighting with great performance and **ultra low-glare**



Why choose SilkSpace?

- Fully luminous, minimalist aesthetic superior performance and ultra low-glare
- Optional controls and sensors
- Wide variety of sizes, lumen packages and color temperatures
- Available in 1'x4', 2'x2' & 2'x4'

Ordering guide

| Family | Size | Version | Configuration | Source |
|--------------------------|-----------------------------------|-------------------------------------|---|--------|
| 42 SilkSpace | 14 1' x 4' | D1 Standard T-grid | ST Standalone | L LED |
| | 22 2' x 2' | C1 Standard T-grid + Chicago Plenum | | |
| | 24 2' x 4' | | | |
| CRI/CCT | Lumens | Optics | Circuit/Wiring Option | |
| 940 CRI 90, 4000K | 40 4000lm | Q Light Guide with MesoOptics | 1 Single circuit B Single circuit + Battery pack | |
| 935 CRI 90, 3500K | 30 3000lm | | | |
| 930 CRI 90, 3000K | 17 1700lm | | | |
| | 68 6800lm | | | |
| | 52 5200lm | | | |
| | 40 4000lm | | | |
| Voltage | Driver | Option | System/Controls | |
| D UNV 120-277V 3 347V | E Advance Xitanium 0-10V (1% Dim) | N None | NN None | |

*Please refer to exclusions.



interact
ready.



PureFX

Exceptional lighting performance and styling. The perfect blend of brightness, control and energy efficiency



Why choose PureFX?

- Graceful aesthetic
- State-of-the-art LED optical design
- High efficiency with a fully luminous optic, minimizing harsh shadows
- Multiple lumen packages and color temperatures

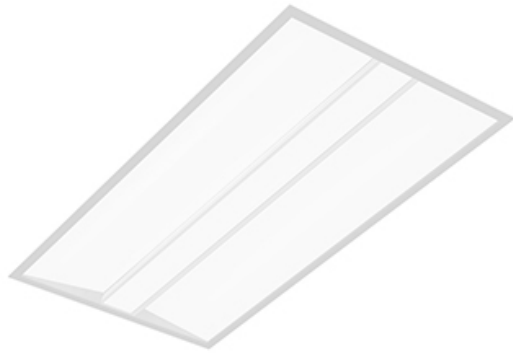


Ordering guide

| Family | Size | Version | Configuration | Source |
|-----------------|-----------------------------------|--------------------|---------------------------------|--------|
| 94 PureFX | 14 1' x 4' | D1 Standard T-grid | ST Standalone | L LED |
| | 22 2' x 2' | D2 Slot T-grid | | |
| CRI/CCT | Lumens | Housing | Circuit/Wiring Option | |
| A CRI 90, 4000K | 44 4400lm | S Standard | 1 Single circuit | |
| B CRI 90, 3500K | 36 3600lm | C Chicago Plenum | B Single circuit + Battery pack | |
| C CRI 90, 3000K | | | | |
| Voltage | Driver | Option | System/Controls | |
| D UNV 120-277V | E Advance Xitanium 0-10V (1% Dim) | N None | NN None | |
| 3 347V | | | | |

*Please refer to exclusions.





Shine

A family of uniformly luminous fixtures combines Ledalite **quality** and **value**



Why choose Shine?

- High efficiency with a fully luminous optic, minimizing harsh shadows
- Wide range of fixture sizes
- Multiple lumen packages and color temperatures to meet any specification
- Outstanding performance with superior energy savings

Ordering guide

| Family | Size | Version | Configuration | Source |
|--------------------------|-----------------------------------|-------------------------------------|---------------------------------|--------|
| 33 Shine | 14 1' x 4' | D1 Standard T-Grid | ST Standalone | L LED |
| | 22 2' x 2' | C1 Standard T-Grid + Chicago Plenum | | |
| | 24 2' x 4' | | | |
| CRI/CCT | Lumens | Optics | Circuit/Wiring Option | |
| 950 CRI 90, 5000K | 50 5000lm | A Acrylic silk lens | 1 Single circuit | |
| 940 CRI 90, 4000K | 45 4500lm | | B Single circuit + Battery pack | |
| 935 CRI 90, 3500K | 40 4000lm | | | |
| 930 CRI 90, 3000K | 35 3500lm | | | |
| 927 CRI 90, 2700K | 30 3000lm | | | |
| | 25 2500lm | | | |
| | 80 8000lm | | | |
| | 75 7500lm | | | |
| | 70 7000lm | | | |
| | 65 6500lm | | | |
| | 60 6000lm | | | |
| | 55 5500lm | | | |
| | 50 5000lm | | | |
| | 45 4500lm | | | |
| 40 4000lm | | | | |
| Voltage | Driver | Option | System/Controls | |
| D UNV 120-277V 3 347V | E Advance Xitanium 0-10V (1% Dim) | N None | NN None | |

*Please refer to exclusions.



interact
ready.



Vectra

Controlled brightness, energy efficiency, **design flexibility** and **easy maintenance** in a refined aesthetic for modern architectural spaces



Why choose Vectra?

- Graceful aesthetic
- State-of-the-art LED optical design
- Three-dimensional batwing lighting distribution
- Patented MesoOptics nanotechnology
- Available in 1'x4' & 2'x2'
- Multiple lumen packages and color temperatures



Ordering guide

| Family | Size | Version | Configuration | Source |
|-----------------|-----------------------------------|--------------------|---------------------------------|--------|
| 97 Vectra | 14 1' x 4' | D1 Standard T-grid | ST Standalone | L LED |
| | 22 2' x 2' | D2 Slot T-grid | | |
| CRI/CCT | Lumens | Housing | Circuit/Wiring Option | |
| A CRI 90, 4000K | 44 4400lm | S Standard | 1 Single circuit | |
| B CRI 90, 3500K | 36 3600lm | C Chicago Plenum | B Single circuit + Battery pack | |
| C CRI 90, 3000K | | | | |
| Voltage | Driver | Option | System/Controls | |
| D UNV 120-277V | E Advance Xitanium 0-10V (1% Dim) | N None | NN None | |
| 3 347V | | | | |

*Please refer to exclusions.





© 2023 Signify Holding. All rights reserved. The information provided herein is subject to change, without notice. Signify does not give any representation or warranty as to the accuracy or completeness of the information included herein and shall not be liable for any action in reliance thereon. The information presented in this document is not intended as any commercial offer and does not form part of any quotation or contract, unless otherwise agreed by Signify.

Signify North America Corporation
400 Crossing Blvd, Suite 600
Bridgewater, NJ 08807
Telephone: 800-555-0050

Signify Canada Ltd.
281 Hillmount Road,
Markham, ON, Canada L6C 2S3
Telephone: 800-668-9008

All trademarks are owned by Signify Holding or their respective owners.