

LUMEC

Tunnels demand
reliable solutions



Roadway

TunnelView
& TubeLine



Fewer worries, better results...



Tunnel and underpass lighting is a
complex and demanding field...

So we know you can't afford
to compromise.



more confidence

In the tunnel business for over 20 years, Lumec is now offering a broad range of new LED solutions and controls. With the Lumec brand, you can have total confidence for all your tunnel and underpass needs.

Correct tunnel and underpass lighting is vital for users' safety to prevent sudden changes in light intensity that adversely affect vision. Also paramount to you, is finding installer-friendly solutions which can lower maintenance costs and are worry-free, while providing quality, efficient, and reliable illumination.

You can satisfy all of these demands with **Lumec TunnelView** and **TubeLine** LED luminaires. Whether you want to upgrade your linear tunnel lighting or need one for one replacement of existing traditional point source luminaires, we understand your requirements and have you covered.

TunnelView

Tunnel & underpass luminaire

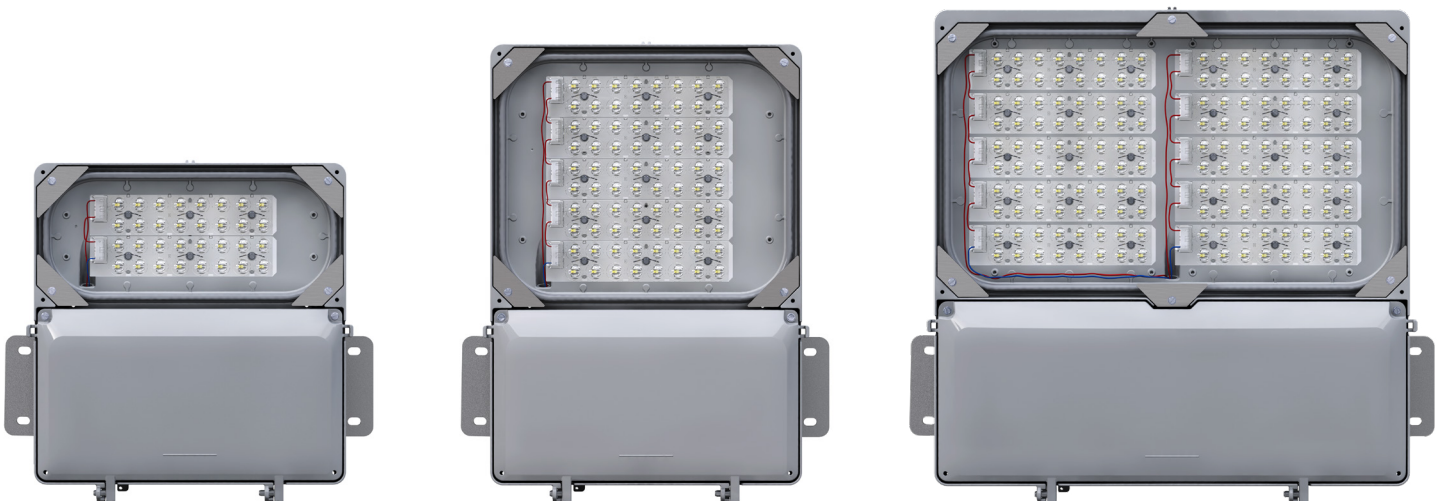
A durable yet sleek point source solution with maximum versatility

TunnelView is compatible with existing infrastructure for easy replacement of HID luminaires. Savings also add up with fast, simple installation, partnered with significantly less and easier servicing than traditional products, thus minimizing costly traffic disruptions.

Available in three sizes, multiple lumen packages, a complete array of optical distributions, and control/connectivity options, this family is sure to make your job easier and exceed your expectations for all types of tunnel and underpass applications.

Also, on the off chance that TunnelView doesn't have the exact options you need, rest assured that we'll work with you on an "Engineered to Order" solution.

For further peace of mind, these luminaires are backed by Service Tag, which includes quick registration, access to luminaire configuration, and spare parts identification, for assistance throughout the life of the product.





Why point source lighting?

The advantages of point source lighting are the high luminous efficacy and the wider luminaire spacing that result in energy savings. Point source illumination is well suited for opposite and staggered arrangements which have two parallel lines of lighting fixtures that can mutually cast light on the center of the road, so it can focus light on the axis of the tunnel to improve uniformity. It is also effective when mounted overhead centering the tunnel. In the past, the threat of luminaire failure was a disadvantage of point source lighting, but the reliability and long life of LEDs minimize this issue.



TunnelView

1 Stainless steel hardware

All exposed screws are stainless steel with ceramic primer seal for high resistance to corrosion

2 Metal core board

Ensures greater heat transfer and longer lifespan

3 Glass lens

Offers IK09 impact protection

4 Durable construction

Rugged, anodized low copper die-cast aluminum housing for maximum durability in harsh environment

5 Secured door

Door is removable and secured with tether to prevent accidental dropping or disengagement

6 Heat sink

Built into the housing, ensures high efficacy and superior cooling by natural convection air flow pattern, always close to LEDs and driver optimizing their efficiency and life

7 LEDs + optics

High performance UV stabilized optical grade polymer refractor lenses to achieve desired distribution, optimized for maximum spacing, target lumens and lighting uniformity

8 Tool-less latches optional

Allows easy access, operable while wearing protective electrical gloves

9 Cast-in alignment guide

For ANSI wattage and source label



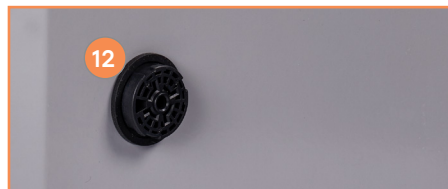
10 Service Tag

Signify's innovative way to provide assistance throughout the life of the product



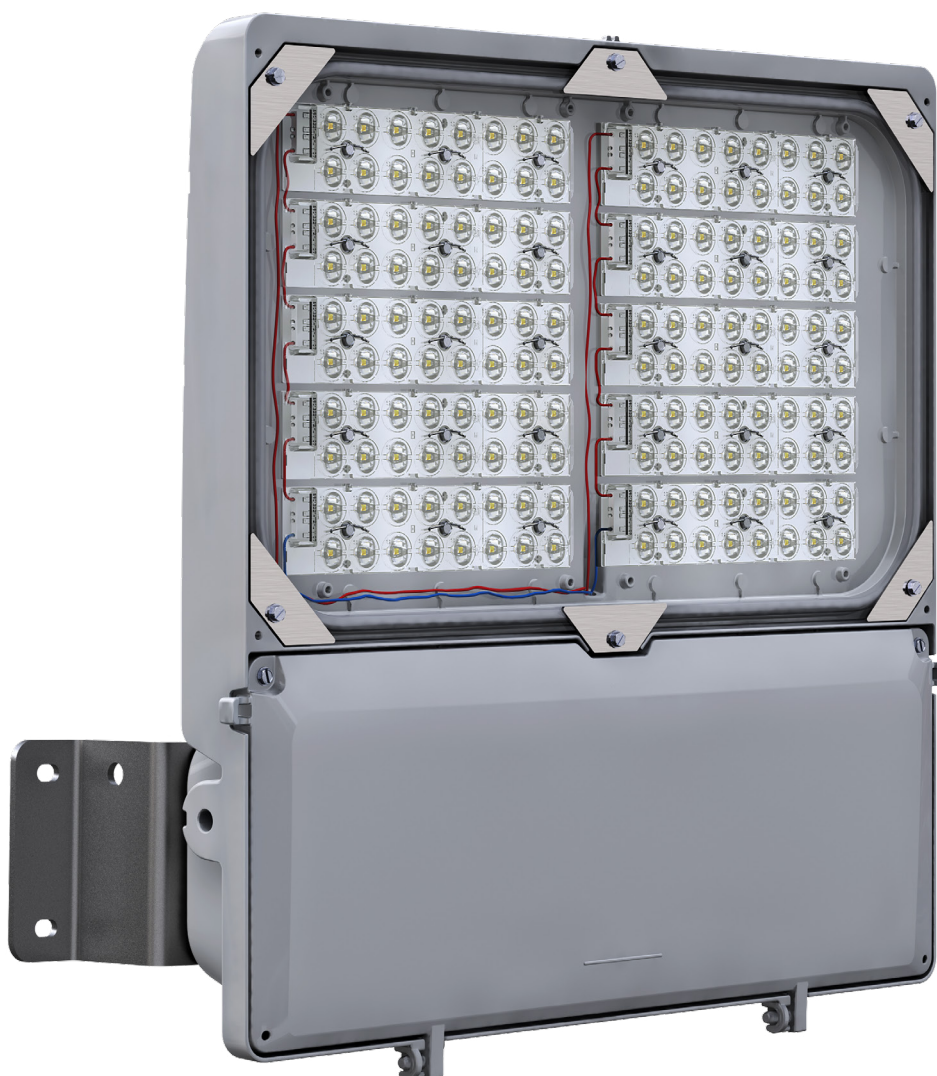
12 SR Driver & Sensor Receptacle

Optional to add flexibility for now or in the future, luminaires ship with a protective cap



11 Gasketing

Weather-proof gasketing for IP66 rated luminaire

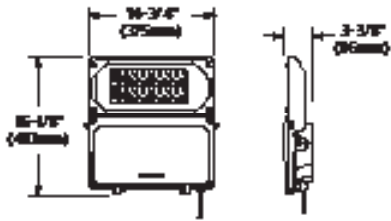


- Three sizes for application flexibility
- Lumen output ranges from 1,700 to 53,900
- Wattages from 20-459
- Nine optical distributions for maximum versatility
- Color temperatures in 2700K, 3000K, or 4000K
- Extensive mounting options from fixed or adjustable to swivel
- Controls options: 0-10V Dimming, DALI, Sensor Ready, NYX Hemera ready
- Service Tag is standard
- Finish available in black, bronze, or gray

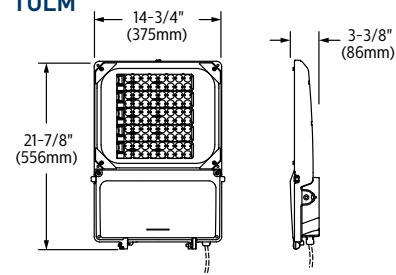
TunnelView

Dimensions and Optical Distributions

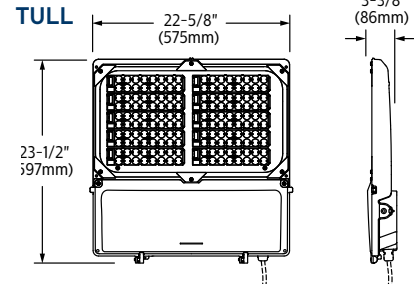
TULS



TULM



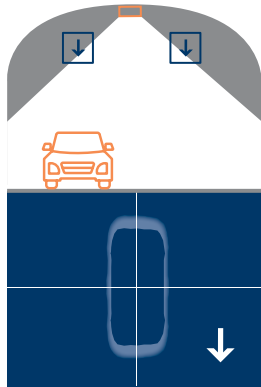
TULL



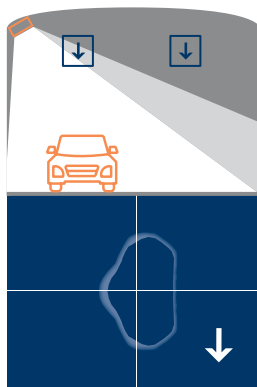
Refer to specification sheets for additional dimensions.

Tunnel Distributions

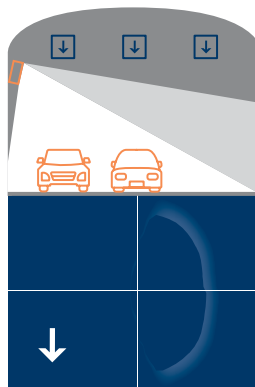
SN
Narrow



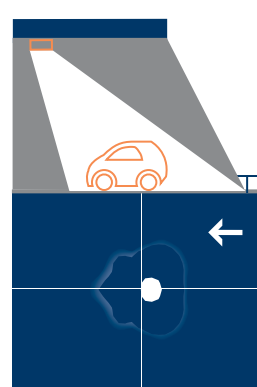
DK
Type II Short



TW2
Type II Wall Mount



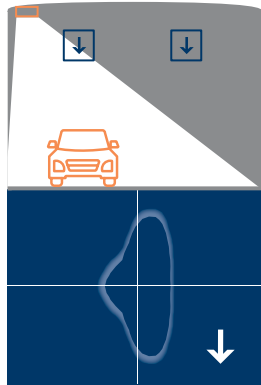
CBL
Ceiling Counter Beam



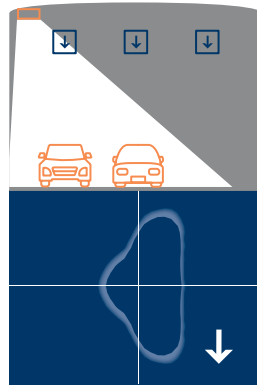
Arrows indicate traffic direction

Underpass Distributions

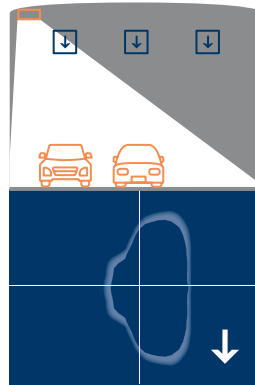
R2M
Type II Medium



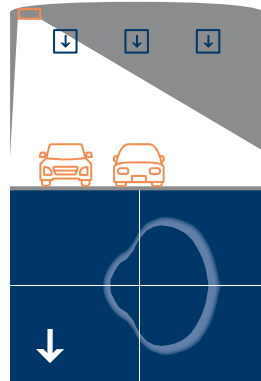
R3M
Type III Medium



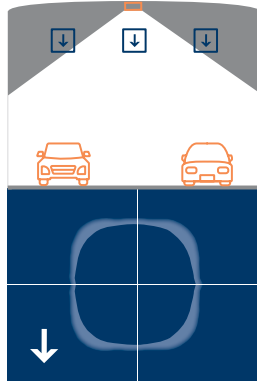
R3W
Type III Wide



4
Type IV



5
Type V



Arrows indicate traffic direction

TunnelView

Mounting/Options & Accessories

15°



10°



5°



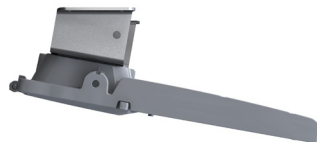
0°



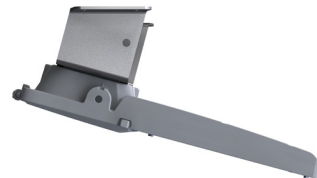
-5°



-10°



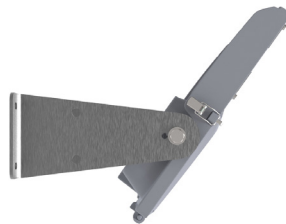
-15°



Slipfitter



Swivel



Junction box (JB1 / JB2) option for through wire and continuous row mounting



Twist lock 7-pin receptacle (TLRD7)



Tool-less latches (TLL)



See spec sheet for complete details and mounting and option/accessory availability.
Custom mounting options also available.

Go to lumec.com/TunnelView to find out more.

TubeLine

Tunnel luminaire

A modular linear solution with a slim profile yet robust design

TubeLine provides outstanding linear lighting for any type of tunnel and is compatible with existing infrastructure. TubeLine is a very flexible tunnel lighting solution, and additional options like through-wiring of luminaires and remote driver boxes make it easy to create the perfect system.

Thanks to a wide range of optics and lumen outputs, TubeLine is configurable to suit any application needs. Designed for quick installation and low maintenance, TubeLine can help save you money and time. Control and connectivity options ensure that it's a future-proof investment for tunnels and underpasses.

The driver boxes of these luminaires are backed by Service Tag, which includes quick registration, access to luminaire configurations, and spare parts identification, for assistance throughout the life of the product.



Why linear lighting?

Continuous linear tunnel lighting combines a flicker-free driving experience with low glare, outstanding visual guidance, and reduced shadowing. Good color rendering enhances recognition of details; road signs are recognized faster when the color is correct. Furthermore, linear lighting offers inherent redundancy, as a failed luminaire will have little effect on the overall scheme, unlike with point source lighting where one failed luminaire can cause lighting levels to drop below minimum requirements. In demanding threshold and transition zones, Lumec TubeLine and TunnelView are designed to be used together to provide superior design flexibility.

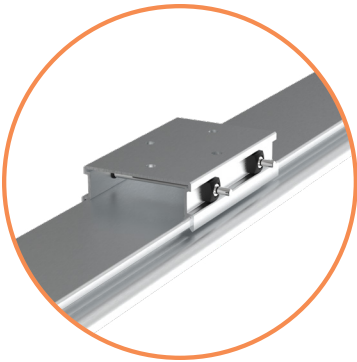
TubeLine

1 Slim profile

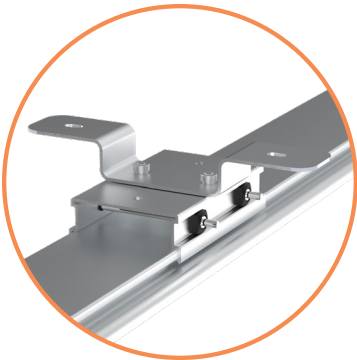
Maximizes headroom and simplifies installation

2 Anodized aluminum finish

Provides corrosion resistance



Od1 fixed mounting bracket



Od2 fixed mounting bracket



Swivel mounting bracket

3 Tempered glass lens

Offers IK08 protection

4 Gasketing

Weather-proof gasketing for IP66 rated luminaire

5 Durable construction

Sturdy, factory sealed design, meeting 3G vibration

6 Direct mounted LEDs

LEDs are mounted directly to the large aluminum housing surface for superior cooling

7 Flying lead

For easy connection



8 Stainless steel hardware

All exposed screws are stainless steel with ceramic primer seal for high resistance to corrosion

9 Durable construction

Rugged low copper die-cast housing for maximum durability in harsh environments



- Lumen output ranges from 3,200 to 18,000
- 3000K and 4000K color temperatures
- Wattages range from 31-167W
- Six distribution types
- Choice of fixed and swivel mounting brackets
- Controls ready, compatible with various systems
- Service Tag is standard on driver box



10 Service Tag

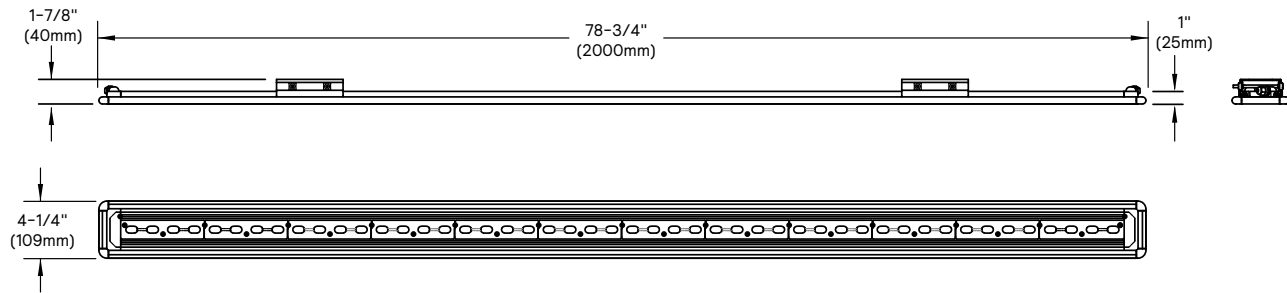
Signify's innovative way to provide assistance throughout the life of the driver box



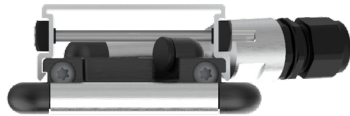
TubeLine

Mounting Options and Dimensions

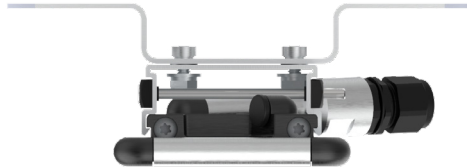
Luminaire



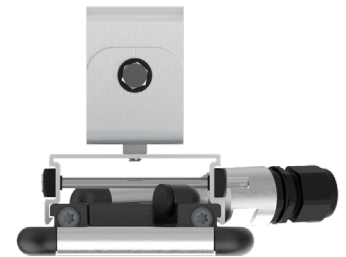
Refer to specification sheets for additional dimensions.



Od1 fixed bracket



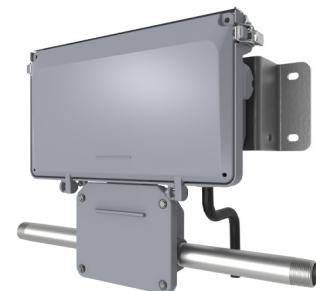
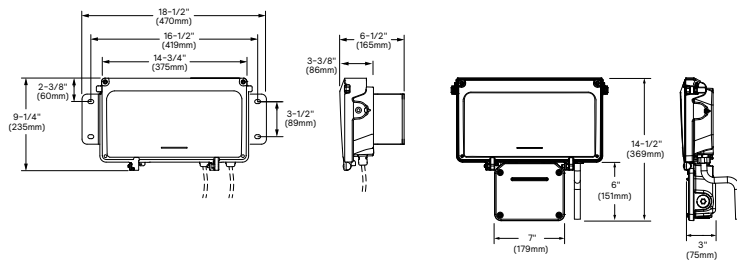
Od2 fixed bracket



SV swivel bracket

Driver Box

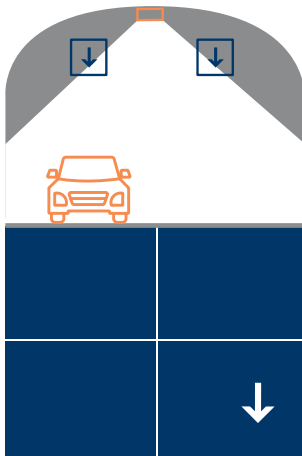
Junction box (JB1 / JB2) option for through wire and continuous row mounting



TubeLine

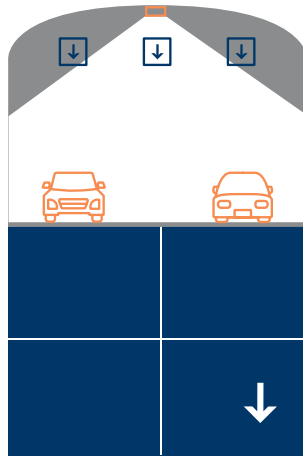
Optical Distributions

DTS
Distribution Symmetrical Standard

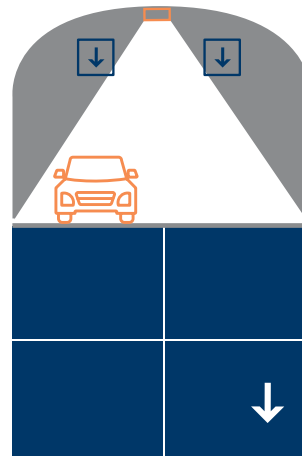


Arrows indicate traffic direction

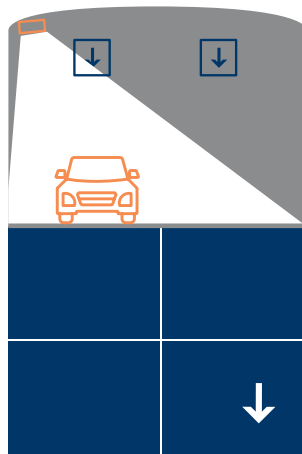
DTS-WB
Distribution Symmetrical Wide



DTS-NB
Distribution Symmetrical Narrow

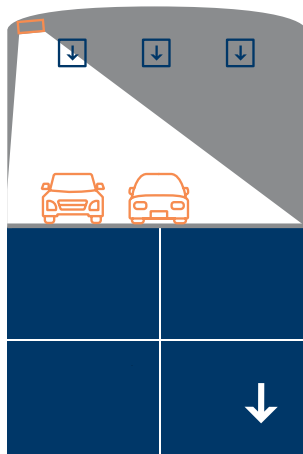


DTA
Distribution Asymmetrical Standard

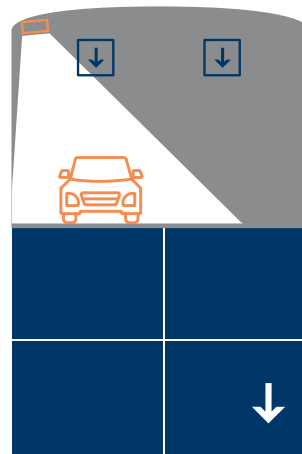


Arrows indicate traffic direction

DTA-WB
Distribution Asymmetrical Wide



DTA-NB
Distribution Asymmetrical Narrow



Go to lumeccom.com/TubeLine to find out more.

Take control of your tunnel

Tunnel lighting systems must be very flexible and able to adapt to the changing environment, from day to night and from cloudy to sunny.

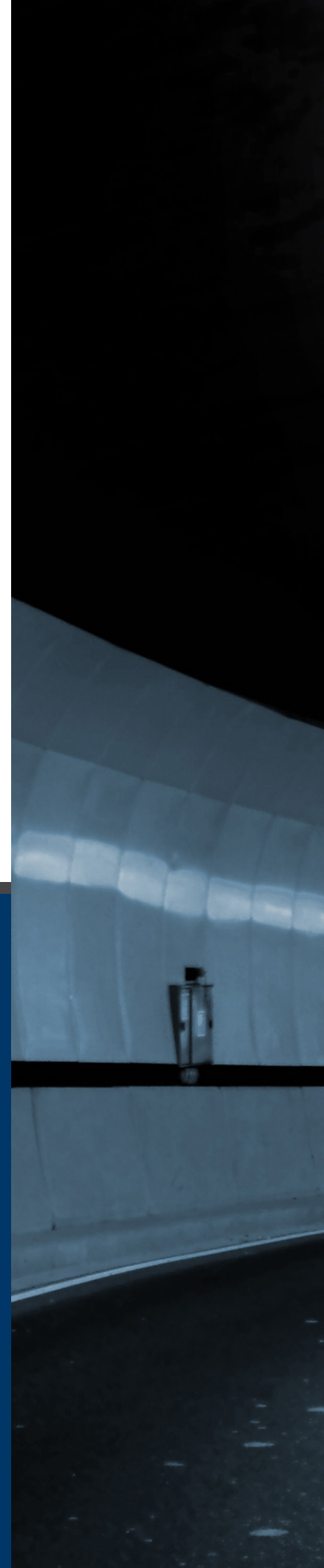
They are divided in many different lighting zones that each have their own specific requirements.

Controlling these zones is thus critical to safety. Lumec's luminaire and controls offering is designed to offer the greatest flexibility to fulfill any project need.

- 0-10V Dimming
- DALI drivers
- Twist-lock 7-pin receptacle
- Sensor Ready (SR) drivers
- NYX-Hemera Ready

Lumec TunnelView and TubeLine luminaires are designed to work with Signify control systems or others in the market place, like NYX-Hemera.

For complete information on controls capabilities consult your local representative.





Turn your challenges into success stories

We understand that your lighting projects often bring unique requirements and need highly specialized solutions. Let us help.

While we offer a broad range of configurable products to meet your needs, nearly everything is customizable. Lumec works closely with you to design products and services around your specific needs through our "Engineered To Order" Program. Whether you need a special finish, or an entirely customized luminaire, we've got you covered.

We can make several levels of modifications, from simple to complex, whether for aesthetic or performance reasons. Leverage the knowledge and competencies of our organization to support your customers' projects. Trust in our leadership and quality as we work closely with you through every stage.

Contact your sales representative to start your customization journey today!



Luminaires you need from brands you trust

Signify understands the diverse needs of utility companies and the pressures you face to provide a reliable solution that will satisfy your customers' demands. Choose us, and make your job easier.

With a full portfolio of utility products and reliable industry brand names like Lumec, Gardco, and Hadco, Signify has a solution for all of your utility lighting needs. All of these high efficiency LED products are designed with the latest technology, are future proof with controls options and compatibility, and offer a broad range of lumen output and mounting options.

Lumec Roadway

Cobraheads



RoadFocus

Off-Road



RoadFocus Off-road

Highmast



HighFocus

Security Lights



Roadway Security Light (RSL)

Tunnel & Underpass



TunnelView

TubeLine

Gardco Floodlights



DuraForm

Lumec Decorative



UrbanScape

MetroScape

TownGuide



Renaissance



Domus

Hadco Decorative



TownView

Hagerstown



© 2025 Signify Holding. All rights reserved. The information provided herein is subject to change, without notice. Signify does not give any representation or warranty as to the accuracy or completeness of the information included herein and shall not be liable for any action in reliance thereon. The information presented in this document is not intended as any commercial offer and does not form part of any quotation or contract, unless otherwise agreed by Signify.

Signify North America Corp.
400 Crossing Blvd, Suite 600
Bridgewater, NJ 08807
Telephone: 800-555-0050

Signify Canada Ltd.
281 Hillmount Road,
Markham, ON, Canada L6C 2S3
Telephone: 800-668-9008

All trademarks are owned by Signify Holding or their respective owners.