

Day-Brite

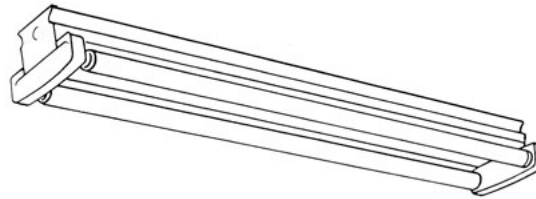
CFI

by Signify

Linear

TS turret strip

4', T8



Project: _____
 Location: _____
 Cat.No: _____
 Type: _____
 Lamps: _____ Qty: _____
 Notes: _____

Day-Brite / CFI TS turret strip is a premium painted after fabrication strip with spring loaded turret type lamp holders.

Ordering guide

Example: TS232-UNV-1/2-EB

Family	No. of Lamps per Cross Section	Lamp Type	Voltage	Options
		32 –		
TS Turret Strip	(not included)	32 32WT8 (48")	UNV Universal voltage 120-277V	1/2 One 2-lamp ballast
TTS Tandem "TS" Series	2 3 4		120 120V 277 277V 347 347V	1/3 One 3-lamp ballast 1/21 2-lamp & 1-lamp ballasts 1/4 One 4-lamp ballast 2/2 Two 2-lamp ballasts 1/42 4-lamp & 2-lamp ballasts 2/4 Two 4-lamp ballasts EB Electronic ballast, <10% THD EB10R Electronic ballast, program rapid start, <10% THD EBHE Electronic ballast, high efficiency, std. ballast factor EBLHE Electronic ballast, high efficiency, low ballast factor EBHHE Electronic ballast, high efficiency, high ballast factor LT20 -20°F start option (use in conjunction with ballast option) E1 B100 emerg. ballast, 350-450 lumens, 120-277V E1CAN B100-CAN emerg. ballast, Canada market, 350-450 lumens, 120/347V E7 B60 emerg. ballast, 600-700 lumens, 120/277V E5 B50 emerg. ballast, U.S. or Canada market, 1100-1400 lumens, UNV E5CAN B50-CAN emerg. ballast, Canada market, 1100-1400 lumens, 120/347VE5ST B50ST emerg. ballast w/self test, 1100-1400 lumens, UNV E5ST B50ST emerg. ballast w/self test, U.S. or Canada market, 1100-1400 lumens, UNV GLR Fusing, fast blow
Power Connect modular wiring available, see sheet 1604-OA for details				

Accessories (order separately)

- CS-400 Rigid Canopy
- CS-500 42° top swivel canopy
- CS-12 12" Stem
- CS-18 18" Stem
- CS-24 24" Stem
- CS-30 30" Stem
- CS-36 36" Stem
- CS-48 48" Stem
- FL-111 Sliding hanger, conduit/stem/screw
- FL-117 Hook, chain (requires FL-111)
- FL-119 Hook, messenger cable (requires FL-111)
- FL-123 5' chain (w/S-hooks) set
- FL-3 Channel coupling
- N-3381 Universal joint aligner, octagonal box, 3/4" I.P.S.



TS Turret strip

4', T8

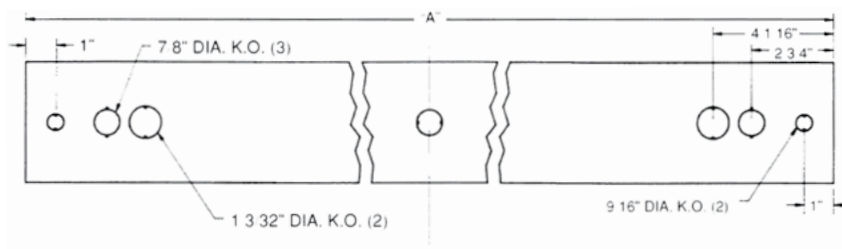
Construction/Finish

- Fixtures suitable for unit, row, surface, or suspension mounting.
- Multiple knockouts for convenient installation.
- Heavy duty channel of code gauge die formed steel.
- High reflectance white baked enamel finish.
- Channel covers secured by twist-lock thumb screws allowing easy wireway access.

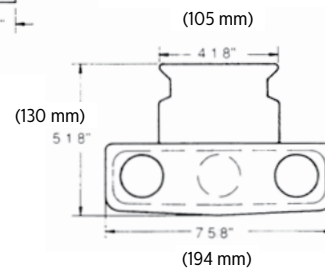
Electrical

- cULus listed for direct mounting on low density ceilings and damp locations.
- Telescopic, pressure-lock lampholders are enclosed in die formed turret housing and may be individually replaced or rewired.

Dimensions



DIM "A"	Inches	(mm)
4'	CHANNEL 50-5/32"	(1274 mm)
8'	CHANNEL 100-5/16"	(2548 mm)



Some luminaires use fluorescent or high intensity discharge (HID) lamps that contain small amounts of mercury. Such lamps are labeled, "Contain Mercury" and/or the symbol "HG". Lamps that contain mercury must be disposed of in accordance with local requirements. Information regarding lamp recycling and disposal can be found at www.lamprecycle.org

