

Day-Brite

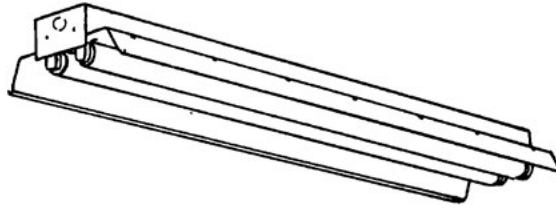
CFI

by Signify

Industrial

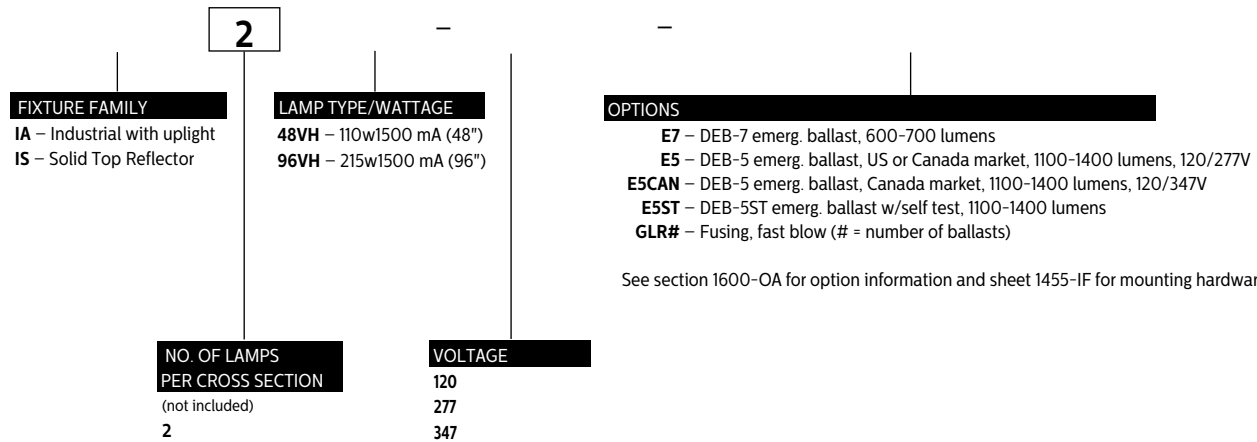
All purpose

4' or 8' 2 lamp



Project: _____
Location: _____
Cat.No: _____
Type: _____
Lamps: _____ Qty: _____
Notes: _____

Catalog Number



Accessories

- 5988W/5977W – Hydee hangers (4' models)
- CS-400 – Rigid stem canopy
- CS-500 – Swivel stem canopy
- CS Series Stems**
- CTBH-1 – T-bar sliding hanger, flush mount
- CTBH-2 – T-bar sliding hanger, 1-1/2" spacing except T12HO/VHO
- CTBH-3 – T-bar sliding hanger, 1-1/2" spacing for T12HO/VHO
- FKR-126 – Chain hanger set
- N-3380/3381 – Universal joint aligner, octagonal box, 1/2" / 3/4" I.P.S.
- N-3385 – Universal joint aligner, square box, 1/2" I.P.S.
- TH-1 – Sliding hanger, flush mounting
- TH-2 – Sliding hanger, 1-1/2" spacing except T12HO/VHO
- TH-4 – Sliding hanger, 1-1/2" spacing for T12HO/VHO
- TC-1 – Heavy duty coupler

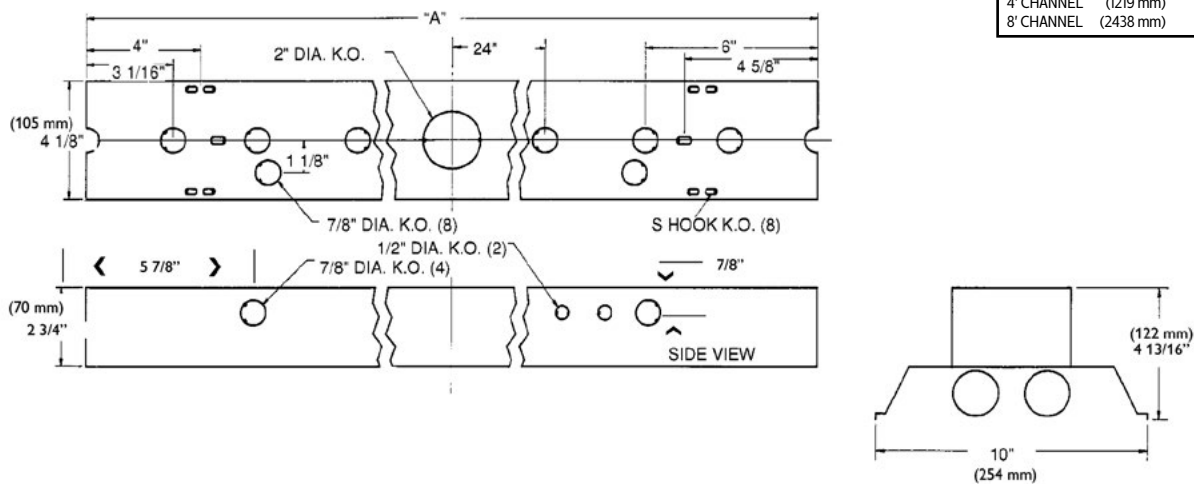
Construction/Finish

- Reflectors feature reinforcing forms and are painted with high reflectance baked white enamel finish.
- Multiple knockouts for convenient installation.
- Heavy duty channel of code gauge die formed steel with baked white enamel finish.
- Reflectors are easily installed and have up-light construction standard. Solid top reflectors are available.
- Combination end cap/coupler requires no tools for installation.
- 1/4 turn reflector fastener requires no tools.
- Suitable for unit or row mounting.

Electrical

- cULus listed for damp locations.
- Self-contained fluorescent emergency power packs can be incorporated, listed for dry locations.
- Pressure lock lampholders secured by snap-in socket plates.
- **IMPORTANT! 1500 mA Fixtures must be suspended with a minimum 1-1/2" clearance to ceiling.**

Dimensions



IA/IS All purpose industrial

Photometry

CATALOG # IA296VH
TEST # 14118 S/MH=1.5

LAMPS = F96 VHO INPUT WATTS = 433
BALLAST = MAGNETIC BALLAST FACTOR = .95

LER = FI-51
TER = 31
FIXTURE EFFICIENCY= 85.9%

COMPARATIVE YEARLY LIGHTING ENERGY COST PER 1000 LUMENS = \$4.71 BASED ON 3000 HRS. AND \$.08 PER KWH.

CANDLEPOWER			
Angle	End	45	Cross
0	6028	6028	6028
5	6009	6021	6052
15	5790	5955	6088
25	5357	5776	6104
35	4730	5495	5992
45	3948	5072	5685
55	3035	4463	5150
65	2046	3654	3950
75	1043	2199	2351
85	213	645	709
95	14	36	40
105	8	163	189
115	10	288	291
125	14	347	424
135	16	308	499
145	21	142	406
155	25	34	133
165	36	37	41
175	35	35	37

MAINTAINED ILLUMINATION TABLE- Square Feet/Fixture*						
■ 80 - 50 - 20 Reflectances (Ceiling - Wall - Floor) ■ LLF = 0.68 13500 Lumens/Lamp (very clean) ■ Room width divided by room height = 5 or more, 2 or 1						
Fixture Size & # of Lamps	Room Width Room Height =	Approx. Area (sq. ft.) per Fixture				
		10 ft-c	30 ft-c	50 ft-c	70 ft-c	100 ft-c
8'	5	-	-	-	-	-
2-Lamp	2	-	-	-	149	104
	1	-	-	149	106	74

*Observe Fixture S/MH Requirements for Specific Applications

AVERAGE LUMINANCE CD/SQ.M WITH 13500 LUMEN LAMPS			
ANGLE	END	45°	CROSS
45	8794	11297	12662
55	8333	12253	14140
65	7622	13613	14716
75	6342	13371	14295
85	3837	11620	12773

TYPICAL V.C.P.'s			
Room Size	Mounting Height		
	Lengthwise	Crosswise	
	8.5	10	8.5
30x30	16	19	11
40x40	15	16	11
60x30	17	19	14
60x60	14	15	10
100x100	15	16	11

LLF = .68 LLF = LIGHT LOSS FACTOR LLD = LDD X LLD X BF LDD = VERY CLEAN 0.94
LLD = 0.76 @ 40% RATED LAMP LIFE BF = 0.95 MAGNETIC BALLAST & 210W LAMP (RELAMP AT 70% LAMP LIFE)

COEFFICIENT OF UTILIZATION									
pfc pcc pw	20			70			50		
	70	50	30	70	50	30	50	30	30
RCR									
0	101	101	101	97	97	97	93	93	93
1	91	86	82	89	83	81	80	77	77
2	81	75	68	80	72	67	68	64	64
3	73	65	56	71	63	56	59	54	54
4	68	56	48	65	55	47	53	46	46
5	61	50	41	59	48	40	46	40	40
6	56	45	36	55	44	35	41	34	34
7	53	40	33	51	40	32	38	30	30
8	48	36	28	46	35	28	34	28	28
9	46	34	26	44	33	26	32	25	25
10	42	30	23	40	29	23	28	23	23

LIGHT DISTRIBUTION			
DEGREES	LUMENS	% LAMP	% FIXTURE
0-30	4917	18.2	21.2
0-40	8321	30.8	35.9
0-60	15997	59.2	69.0
0-90	22120	81.9	95.4
90-180	1064	3.9	4.6
0-180	23183	85.9	100.0



Some luminaires use fluorescent or high intensity discharge (HID) lamps that contain small amounts of mercury. Such lamps are labeled, "Contain Mercury" and/or the symbol "Hg". Lamps that contain mercury must be disposed of in accordance with local requirements. Information regarding lamp recycling and disposal can be found at www.lamprecycle.org

