

Day-Brite

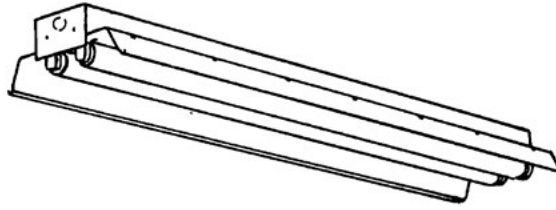
CFI

by Signify

Industrial

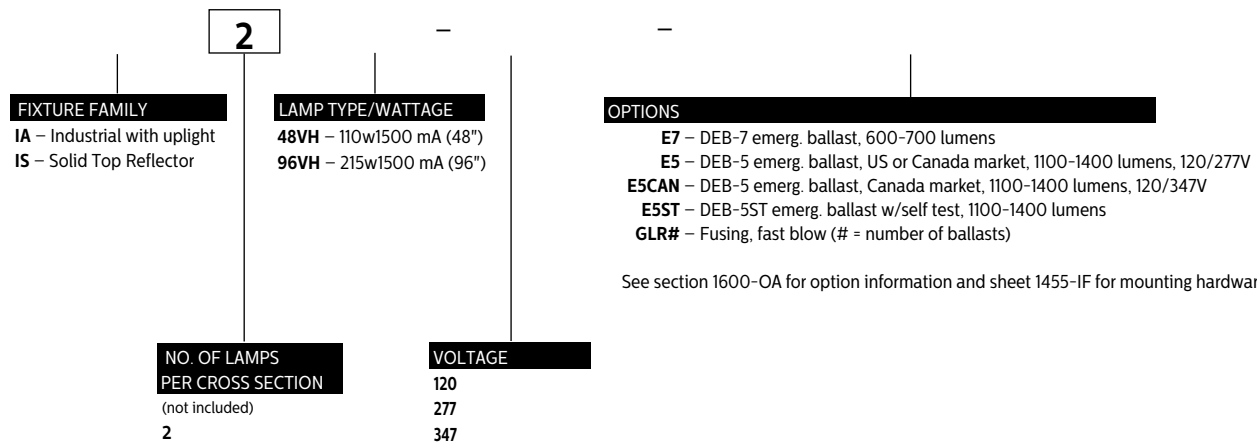
All purpose

4' or 8' 2 lamp



Project: _____
Location: _____
Cat.No: _____
Type: _____
Lamps: _____ Qty: _____
Notes: _____

Catalog Number



Accessories

- 5988W/5977W – Hydee hangers (4' models)
- CS-400 – Rigid stem canopy
- CS-500 – Swivel stem canopy
- CS Series Stems**
- CTBH-1 – T-bar sliding hanger, flush mount
- CTBH-2 – T-bar sliding hanger, 1-1/2" spacing except T12HO/VHO
- CTBH-3 – T-bar sliding hanger, 1-1/2" spacing for T12HO/VHO
- FKR-126 – Chain hanger set
- N-3380/3381 – Universal joint aligner, octagonal box, 1/2" / 3/4" I.P.S.
- N-3385 – Universal joint aligner, square box, 1/2" I.P.S.
- TH-1 – Sliding hanger, flush mounting
- TH-2 – Sliding hanger, 1-1/2" spacing except T12HO/VHO
- TH-4 – Sliding hanger, 1-1/2" spacing for T12HO/VHO
- TC-1 – Heavy duty coupler

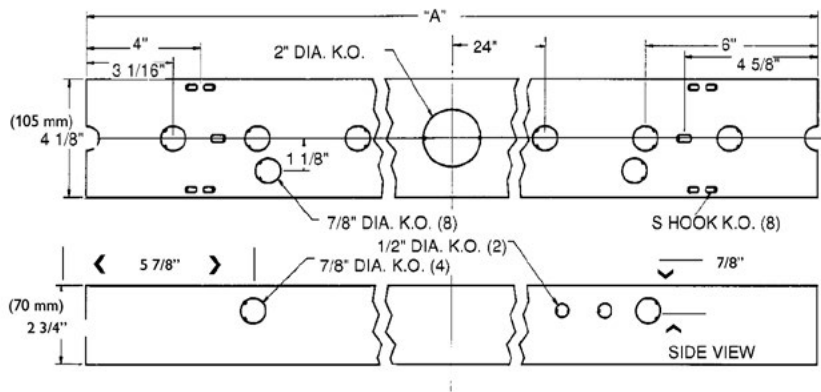
Construction/Finish

- Reflectors feature reinforcing forms and are painted with high reflectance baked white enamel finish.
- Multiple knockouts for convenient installation.
- Heavy duty channel of code gauge die formed steel with baked white enamel finish.
- Reflectors are easily installed and have up-light construction standard. Solid top reflectors are available.
- Combination end cap/coupler requires no tools for installation.
- 1/4 turn reflector fastener requires no tools.
- Suitable for unit or row mounting.

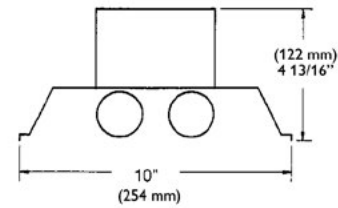
Electrical

- cULus listed for damp locations.
- Self-contained fluorescent emergency power packs can be incorporated, listed for dry locations.
- Pressure lock lampholders secured by snap-in socket plates.
- **IMPORTANT! 1500 mA Fixtures must be suspended with a minimum 1-1/2" clearance to ceiling.**

Dimensions



| DIM "A" | | |
|------------|-----------|-----|
| 4" CHANNEL | (1219 mm) | 48" |
| 8" CHANNEL | (2438 mm) | 96" |



IA/IS All purpose industrial

Photometry

CATALOG # IA296VH

LAMPS = F96 VHO

INPUT WATTS = 433

LER = FI-51

TEST # 14118 S/MH=1.5

BALLAST = MAGNETIC

BALLAST FACTOR = .95

TER = 31

FIXTURE EFFICIENCY= 85.9%

COMPARATIVE YEARLY LIGHTING ENERGY COST PER 1000 LUMENS = \$4.71 BASED ON 3000 HRS. AND \$.08 PER KWH.

| CANDLEPOWER | | | |
|-------------|------|------|-------|
| Angle | End | 45 | Cross |
| 0 | 6028 | 6028 | 6028 |
| 5 | 6009 | 6021 | 6052 |
| 15 | 5790 | 5955 | 6088 |
| 25 | 5357 | 5776 | 6104 |
| 35 | 4730 | 5495 | 5992 |
| 45 | 3948 | 5072 | 5685 |
| 55 | 3035 | 4463 | 5150 |
| 65 | 2046 | 3654 | 3950 |
| 75 | 1043 | 2199 | 2351 |
| 85 | 213 | 645 | 709 |
| 95 | 14 | 36 | 40 |
| 105 | 8 | 163 | 189 |
| 115 | 10 | 288 | 291 |
| 125 | 14 | 347 | 424 |
| 135 | 16 | 308 | 499 |
| 145 | 21 | 142 | 406 |
| 155 | 25 | 34 | 133 |
| 165 | 36 | 37 | 41 |
| 175 | 35 | 35 | 37 |

| MAINTAINED ILLUMINATION TABLE- Square Feet/Fixture* | | | | | | |
|--|-----------------------------|------------------------------------|---------|---------|---------|----------|
| <ul style="list-style-type: none"> 80 - 50 - 20 Reflectances (Ceiling - Wall - Floor) LLF = 0.68 13500 Lumens/Lamp (very clean) Room width divided by room height = 5 or more, 2 or 1 | | | | | | |
| Fixture Size & # of Lamps | Room Width Room Height = | Approx. Area (sq. ft.) per Fixture | | | | |
| | | 10 ft-c | 30 ft-c | 50 ft-c | 70 ft-c | 100 ft-c |
| 8' | 5 | - | - | - | - | - |
| 2-Lamp | 2 | - | - | - | 149 | 104 |
| | 1 | - | - | 149 | 106 | 74 |

*Observe Fixture S/MH Requirements for Specific Applications

| AVERAGE LUMINANCE CD/SQ.M WITH 13500 LUMEN LAMPS | | | |
|--|------|-------|-------|
| ANGLE | END | 45° | CROSS |
| 45 | 8794 | 11297 | 12662 |
| 55 | 8333 | 12253 | 14140 |
| 65 | 7622 | 13613 | 14716 |
| 75 | 6342 | 13371 | 14295 |
| 85 | 3837 | 11620 | 12773 |

| TYPICAL V.C.P.'s | | | |
|------------------|-----------------|-----------|-----|
| Room Size | Mounting Height | | |
| | Lengthwise | Crosswise | |
| | 8.5 | 10 | 8.5 |
| 30x30 | 16 | 19 | 11 |
| 40x40 | 15 | 16 | 11 |
| 60x30 | 17 | 19 | 14 |
| 60x60 | 14 | 15 | 10 |
| 100x100 | 15 | 16 | 11 |

LLF = .68 LLF = LIGHT LOSS FACTOR LLD = LDD X LLD X BF LDD = VERY CLEAN 0.94
LLD = 0.76 @ 40% RATED LAMP LIFE BF = 0.95 MAGNETIC BALLAST & 210W LAMP (RELAMP AT 70% LAMP LIFE)

| COEFFICIENT OF UTILIZATION | | | | | | | | | |
|----------------------------|-----|-----|-----|----|----|----|----|----|----|
| pfc pcc pw | 20 | | | 70 | | | 50 | | |
| | 70 | 50 | 30 | 70 | 50 | 30 | 50 | 30 | 30 |
| RCR | | | | | | | | | |
| 0 | 101 | 101 | 101 | 97 | 97 | 97 | 93 | 93 | 93 |
| 1 | 91 | 86 | 82 | 89 | 83 | 81 | 80 | 77 | 77 |
| 2 | 81 | 75 | 68 | 80 | 72 | 67 | 68 | 64 | 64 |
| 3 | 73 | 65 | 56 | 71 | 63 | 56 | 59 | 54 | 54 |
| 4 | 68 | 56 | 48 | 65 | 55 | 47 | 53 | 46 | 46 |
| 5 | 61 | 50 | 41 | 59 | 48 | 40 | 46 | 40 | 40 |
| 6 | 56 | 45 | 36 | 55 | 44 | 35 | 41 | 34 | 34 |
| 7 | 53 | 40 | 33 | 51 | 40 | 32 | 38 | 30 | 30 |
| 8 | 48 | 36 | 28 | 46 | 35 | 28 | 34 | 28 | 28 |
| 9 | 46 | 34 | 26 | 44 | 33 | 26 | 32 | 25 | 25 |
| 10 | 42 | 30 | 23 | 40 | 29 | 23 | 28 | 23 | 23 |

| LIGHT DISTRIBUTION | | | |
|--------------------|--------|--------|-----------|
| DEGREES | LUMENS | % LAMP | % FIXTURE |
| 0-30 | 4917 | 18.2 | 21.2 |
| 0-40 | 8321 | 30.8 | 35.9 |
| 0-60 | 15997 | 59.2 | 69.0 |
| 0-90 | 22120 | 81.9 | 95.4 |
| 90-180 | 1064 | 3.9 | 4.6 |
| 0-180 | 23183 | 85.9 | 100.0 |



Some luminaires use fluorescent or high intensity discharge (HID) lamps that contain small amounts of mercury. Such lamps are labeled, "Contain Mercury" and/or the symbol "Hg". Lamps that contain mercury must be disposed of in accordance with local requirements. Information regarding lamp recycling and disposal can be found at www.lamprecycle.org

