

## READ AND UNDERSTAND THESE INSTRUCTIONS BEFORE INSTALLING FIXTURE

This fixture is intended for installation in accordance with the National Electrical Code and local regulations. To assure full compliance with local codes and regulations, check with your local electrical inspector before installation. To prevent electrical shock, turn off electricity at fuse box before proceeding.

Retain these instructions for maintenance reference.

INSTRUCTION SHEET NO.

# IS:1000P1

## INSTALLATION PROCEDURE FOR FRAME-IN KIT 1000P1

**WARNING-(RISK OF FIRE): DO NOT INSTALL INSULATION WITHIN THREE INCHES OF FIXTURE SIDES OR WIRING COMPARTMENT, NOR ABOVE FIXTURE IN SUCH A MANNER TO ENTRAP HEAT.**

### A. FRAME-IN AND WIRE-IN

Line up bottom edge of ADJUSTABLE MOUNTING BAR with bottom of wood joist (Fig. A). Fasten MOUNTING FRAME to wood joist by nailing MOUNTING BAR TAB or nail into joist. Wire to supply leads. White fixture lead to neutral supply lead. Black fixture lead to hot (120V.) supply lead. Bare fixture wire to supply ground. Use wirenuts (local hardware items). Place all electrical connections in the J-BOX. Attach J-BOX COVER onto J-BOX. (Use built-in CABLE CLAMP in J-BOX for non-metallic sheathed cable (Romex), or ARMORED CABLE (BX).)

### NOTES:

1. ADJUSTABLE MOUNTING BARS can be installed either on long or short side of MOUNTING FRAME. Locking screws are provided to lock frame in a desired position.
2. MOUNTING BARS can be extended to 24". The MOUNTING FRAME can be mounted off-center. Align SLOT of one MOUNTING BAR with hole of the other MOUNTING BAR and drive screw into hole. Take pliers and bend tab on MOUNTING FRAME over towards extended MOUNTING BAR until MOUNTING FRAME no longer slides along MOUNTING BARS. (Fig. B) CENTERING SLOTS are provided as guides to align adjacent frames.
3. For suspended ceilings, make certain that bottom of MOUNTING FRAME is no higher than 1" above ceiling line, and notched area of ADJUSTABLE MOUNTING BARS are positioned on top of T BAR. (Fig. C)

### C. CLOSE-IN

Install in plasterboard or other dry type ceiling. Hole in board can be cut either on floor or after the board is nailed to the ceiling, using MOUNTING FRAME opening as cutting guide (make sure ROTO CLIPS are rotated out of hole area). ROTO CLIPS can only be rotated counterclockwise. This detail allows easy removal of REFLECTOR TRIM by rotating TRIM counterclockwise and permits installing REFLECTOR TRIM tightly against the ceiling surface by rotating TRIM clockwise after pushing TRIM into ceiling.

### NOTE:

For wet plaster ceiling, use Plaster Ring Accessory No. 1960 (order separately).

**D. ATTACH SOCKET TO TRIM** } SEE SEPARATE REFLECTOR TRIM INSTRUCTION SHEETS.

### F. PUSH-UP

**WARNING: USE ONLY WITH TRIMS DESIGNATED BY LIGHTOLIER INC. USE OF OTHER MANUFACTURERS' TRIMS VOIDS THE UNDERWRITERS LABORATORIES LISTING AND COULD CONSTITUTE A FIRE HAZARD.**

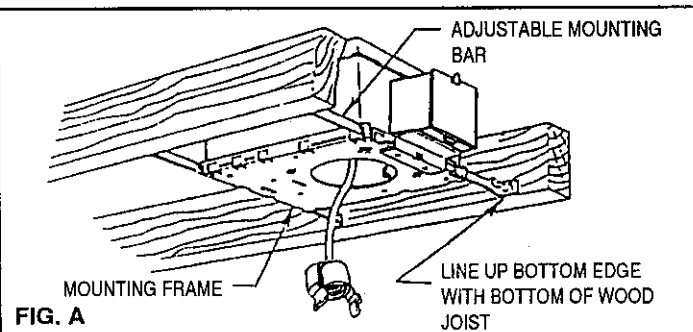


FIG. A

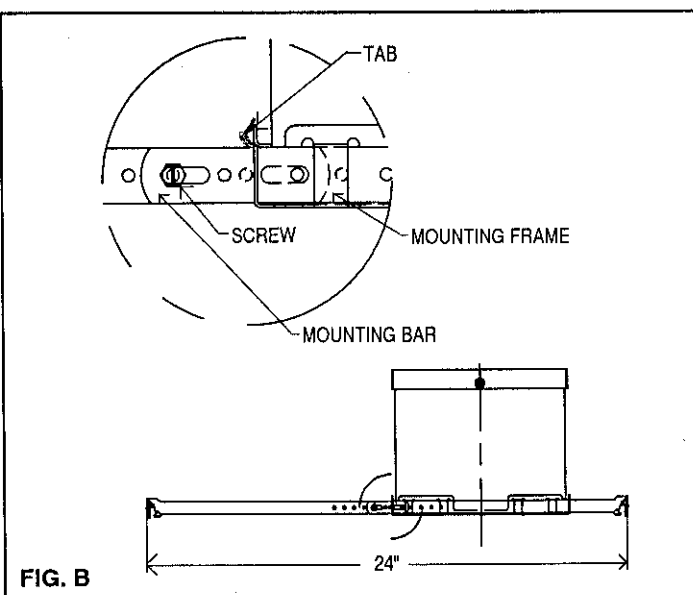


FIG. B

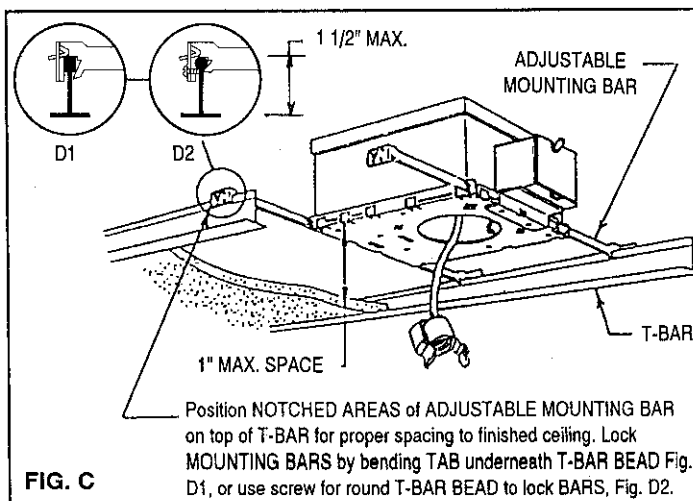


FIG. C

# PHILIPS LIGHTOLIER

Philips Lighting North America Corporation  
200 Franklin Square Drive  
Somerset, NJ 08873, USA  
Phone: 855-486-2216

Philips Lighting Canada Ltd.  
281 Hillmount Road  
Markham ON, Canada L6C 2S3  
Phone: 800-668-9008