

# Day-Brite

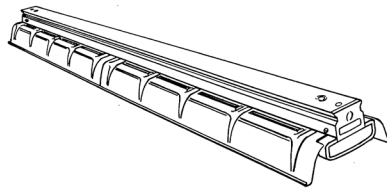
## CFI

by Signify

### Industrial

1F specification

T8 or T12 Slimline



Project: \_\_\_\_\_  
 Location: \_\_\_\_\_  
 Cat.No: \_\_\_\_\_  
 Type: \_\_\_\_\_  
 Lamps: \_\_\_\_\_ Qty: \_\_\_\_\_  
 Notes: \_\_\_\_\_

Day-Brite / CFI 1F specification industrial is a heavy duty turret industrial fluorescent luminaire providing 10% uplight and 13° crosswise sheilding.

#### Ordering guide

Example: 1F259-PP-UNV-1/2-EB

Family	No. of Lamps per Cross Section	Lamp Type	Reflector Options	Voltage	Options
1F		—	—	—	
1F Spec. Industrial (10% uplight)	(not included) 2 3 4	48 38W T12 Slimline (48") 59 59W T8 Slimline (96") 96 75W T12 Slimline (96")	PP Painted Polyester PPS Painted Polyester solid top	UNV Universal voltage 120/277V 120 120V 277 277V 347 347V	1/2 One 2-lamp ballast 1/21 2-lamp & 1-lamp ballasts 2/2 Two 2-lamp ballasts EB Electronic ballast, <10% THD E7 B60 emerg. ballast, 600-700 lumens, 120/277V E5 B50 emerg. ballast, U.S. or Canada market, 1100-1400 lumens, UNV E5CAN B50-CAN emerg. ballast, Canada market, 1100-1400 lumens, 120/347V E5ST B50ST emerg. ballast w/self test, 1100-1400 lumens, UNV GLR Fusing, fast blow  Power Connect modular wiring available, see sheet 1604-OA for details

#### Accessories (order separately)

- CS-400 Rigid Canopy
- CS-500 42" Top Swivel Canopy
- CS-12 12" Stem
- CS-18 18" Stem
- CS-24 24" Stem
- CS-30 30" Stem
- CS-36 36" Stem
- CS-48 48" Stem
- FL-111 Sliding hanger, conduit/stem/screw
- FL-117 Hook, chain (requires FL-111)
- FL-119 Hook, messenger cable (requires FL-111)
- FL-123 5' chain (w/S-hooks) set
- FL-173 4' wire guard (use 2 for 8')
- FL-3 Channel coupling
- FL-5 Reflector end cap (pair)
- N-3381 Universal joint aligner, octagonal box, 3/4" I.P.S.



# 1F Specification industrial

## T8 or T12 Slimline

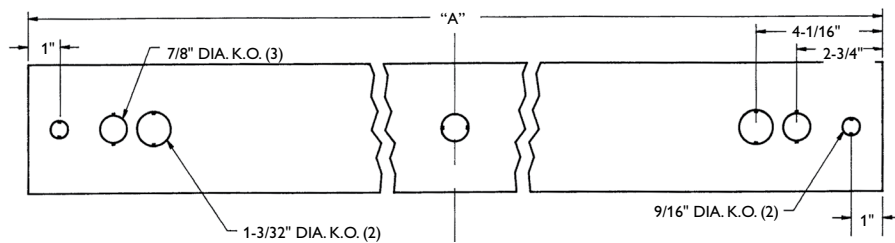
### Construction/Finish

- Reflectors provide 10% uplight. Solid tops are available.
- Multiple knockouts for convenient installation.
- Heavy duty channel of code gauge die formed steel.
- Reflectors have stiffening ribs for rigidity and provide 13° crosswise shielding.
- Twist-lock reflector thumb screws.
- Continuous rows utilize a simple concealed coupling, FL-3 (optional).

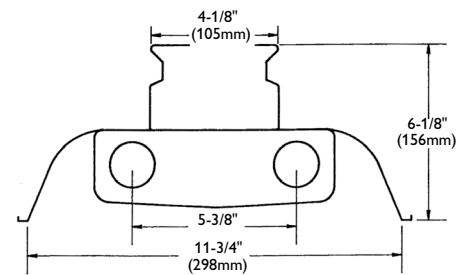
### Electrical

- cULus listed for direct mounting on low density ceilings and damp locations.
- Self-contained fluorescent emergency power packs can be incorporated.
- Spring-loaded turret lampholders provide positive lamp engagement and electrical contact.

### Dimensions



DIM "A"		
4' Channel	(1227mm)	48-5/16"
8' Channel	(2446mm)	96-5/16"



# 1F Specification industrial

## T8 or T12 Slimline

### Photometry

#### 1F 8' 2 Lamp F96T8

Efficiency – 93.6%

LER – 85

TER – 51

		Candlepower				Light Distribution				Average Luminance						
Catalog No.	1F259-PP-1/2-EB	Angle	End	45	Cross	Degrees	Lumens	% Lamp	% Luminaire	Angle	End	45°	Cross			
Test No.	42342	0	3006	3006	3006	0-30	2394	20.6	22.1	45	3786	4076	4511			
S/MH	1.4	5	3001	2991	3039	0-40	3986	34.4	36.7	55	3725	4419	4284			
Lamp Type	F96T8	15	2910	2936	2985	0-60	7404	63.8	68.2	65	3550	4071	4007			
Lumens/Lamp	5800	25	2716	2770	2829	0-90	9660	83.3	89.0	75	3115	4080	2916			
Ballast Factor	0.85	35	2442	2535	2634	90-180	1198	10.3	11.0	85	2290	2024	1832			
Input Watts	109	45	2079	2238	2477	0-180	10858	93.6	100.0							
		55	1659	1968	1908	<b>Coefficients of Utilization</b>										
		65	1165	1336	1315	<b>EFFECTIVE FLOOR CAVITY REFLECTANCE 20 PER (pfc=0.20)</b>										
		75	626	820	586	pcc		80			70			50		
		85	155	137	124	pw		70	50	30	70	50	30	50	30	
		95	17	35	38	RCR										
		105	124	49	116	0	109	109	109	105	105	105	97	97		
		115	262	30	38	1	98	94	91	95	91	88	85	82		
		125	400	46	34	2	90	81	75	85	79	72	73	68		
		135	524	167	53	3	81	71	64	78	68	61	65	58		
		145	626	313	196	4	73	63	55	70	60	53	56	51		
		155	707	441	370	5	68	56	47	65	54	46	51	44		
		165	769	723	575	6	63	50	41	59	48	40	46	39		
		175	796	783	795	7	57	45	36	56	44	35	41	34		
						8	54	40	33	52	40	33	38	30		
						9	50	38	29	47	36	28	34	28		
						10	46	34	27	45	34	27	32	26		

Comparative yearly lighting energy cost per 1000 lumens – **\$2.82** based on 3000 hrs. and \$.08 pwr KWH.

The photometric results were obtained in the Day-Brite laboratory which is NVLAP accredited by the National Institute of Standards and Technology.



Some luminaires use fluorescent or high intensity discharge (HID) lamps that contain small amounts of mercury. Such lamps are labeled, "Contain Mercury" and/or the symbol "HG". Lamps that contain mercury must be disposed of in accordance with local requirements. Information regarding lamp recycling and disposal can be found at [www.lamprecycle.org](http://www.lamprecycle.org)

